

ORNAMENT



Constance Pendleton

932

~~ms. A. 1. 1. 1. 1. 1.~~

1719

ORNAMENT

ORNAMENT

TWO THOUSAND DECORATIVE MOTIFS IN COLOUR,
FORMING A SURVEY OF THE APPLIED ART OF ALL AGES
AND ALL COUNTRIES

With an Introduction and Catalogue

by

H. TH. BOSSERT



LONDON: ERNEST BENN LIMITED

8, BOUVERIE STREET, E.C.

1924
6735
3-3-64

THE MAJORITY OF THE ORIGINAL WATERCOLOURS OF THE
PLATES WERE PAINTED BY MESSRS. ERNST BOLLACHER
AND MAX TILKE, BERLIN; THE REMAINDER BY MR. DENGLER,
STUTTGART, MR. ERICH, POTSDAM, AND MISS ALBERTS,
HAMBURG. THE PHOTOGRAPHIC WORK WAS DONE BY
MISS WASMUTH. THE COLOUR-PRINTING WAS EXECUTED
AT DR SELLE AND CO.'S GRAPHIC ART WORKS, BERLIN.
THE LETTERPRESS WAS PRINTED BY OTTO v. HOLTEN,
THE COVER DESIGNED BY LUCIAN ZABEL, BERLIN

T45 44
B

COPIES OF THIS EDITION ARE NOT FOR SALE IN THE UNITED STATES OF AMERICA
ALL RIGHTS RESERVED
COPYRIGHT BY ERNST WASMUTH, LTD., BERLIN, W. S
PRINTED AND MADE IN GERMANY

PREFATORY NOTE

The State Museums in Berlin have rendered every assistance in their power to the editor of this volume on Ornament. It is their principle willingly to help all who make use of the museums to further art, science, and national economy. The Berlin and other museums contributing to this novel and inexhaustible collection of coloured ornament will also profit by it, for a monumental work of this kind that is consulted by many is bound to convey a widespread conception of the variety of their collections and the wealth of their unexploited treasures.

Dr. H. Th. Bossert has gone his own way and followed his own ideas in selecting the patterns. Guided by the spirit of the artistic requirements of our times, he has passed over the well-known ornamental motifs of historic styles which, published in older volumes on the subject, have been drawn on and exhausted during the last art period. He has tapped new sources for new requirements. There is no doubt that the creations of prehistoric and archaic epochs preceding the periods of highest art development, as well as those of primitive peoples and folk art (closely allied to ancient motifs), will satisfy the craving and reward the search for new artistic expression, and bring related impulses to the surface.

If the pure novelty of the illustrations, that have been so systematically selected, is the first advantage of this new collection, the second (perhaps not so conspicuous, but equally important) is the manner in which it is presented. I do not mean the praiseworthy faithfulness with which the coloured originals have been reproduced, but the pronounced attempt to depict as far as possible the ornamental motif in connection with the object and material on which it is placed. We know to-day, or at any rate we are more aware of the fact, that every ornamental idea is closely connected with the form and material of the object for which and with which it was conceived. The simpler and more primitive the ornament, the closer and more indissoluble the connection. It becomes soulless and loses its charm if removed from its background and transferred to another technique. Even in times of the highest development of art, to say nothing of the last art period, examples of ornament are met with which are rendered worthless by transplantation: Gothic basso-relievo patterns vividly and boldly carved in soft pine-wood, for which they were originally intended, are insipid and lifeless when cut in hard wood; late antique patterns of silk weaving, when imitated in woollen tapestry, appear both coarse and distorted.

The method of presentation employed in the following Plates, in which the background is given its full value, should counteract such a misuse of ornamental motifs. It seems to me a special merit of this work on ornament that it will arouse a sense of the conditions of technique and material, and that by it we shall attain to a clearer perception of such artistic requirements. Hence this volume will be of much greater value than previous works on the subject.

Otto v. Falke

INTRODUCTION

The times in which we live are felt to be a turning point. The break with all traditions is realized more and more emphatically and distinctly. But, as yet, there has been no innovation, and there are too many forerunners to make it possible to recognize a clear uniform direction. At first it did not seem possible to create a new volume of patterns, a collection of ornaments, for such a period. It was no longer a question of simply presenting examples of Greek, Roman, Romanesque, Gothic, or Baroque styles, as was justifiable in the large works on ornaments published in the 19th Century, for these patterns were not only exhausted by a continually increasing demand made by artists and industries, but they did not in any way meet the requirements of our times, or show any new kindred traits.

It was therefore incumbent on the editor to satisfy the requirements of our period, which, though not too clear in detail, were in many respects recognizable, and to offer such stimulus as would meet the needs of altered tastes, and point out possible lines of development in the near future. Inspired by purely practical considerations, the new volume of ornament and decoration should show the way to-day as well as did the older works formerly. I need not justify myself to those who have an observing eye for our times for thinking it essential to draw particular attention to such cultures as have been little explored by art history, or which have been completely ignored till recently, in order to supply the requisite and wished-for inspiration to a present-day conception of style.

The next difficulty for the editor was to obtain a comprehensive view of phenomena that have not yet been elucidated by numerous publications and investigations. On the other hand he became acquainted with cultural areas from which he could expect the greatest fructification of the creative spirit in ornamental design. He discovered a wealth of exuberant decorative art which was possessed of remarkable qualities of inspiration; particularly in those expressions of culture which had hitherto remained almost *terra incognita* for scientific investigation: above all in the almost illimitable field of folk art and that of primitive peoples. Perhaps the work may nevertheless contain some plates which appear at first sight neither intelligible nor necessary to the creative artist. The editor begs his readers to pay special attention to just such plates, for valuable qualities are not always obvious without close inspection. And if this book also aims at serving practical purposes, it does not wish to inspire mere thoughtless imitation. It only endeavours to stir the imagination of the creative artist. Forms which, in the profoundest sense of the word, accord with the spirit of our epoch, can only be created by a free interpretation of the patterns.

In this volume the main consideration has been devoted to the pre-classic, occidental, Islamic, Asiatic, and ancient American cultures during the period of their highest development, as well as to those of native peoples, and European folk art. But in finally compiling the work, the changing tendencies of our times had to be taken into account in presentation and reproduction. Former works on the subject were usually limited to copies of the patterns, so that the connections between object and form, out of which the decorations originated, were hardly, or not at all, recognizable. This volume attempts to retain the unity of ornament material and form. For this reason the ornamentations are reproduced as far as possible in such a manner as not to separate them from their background, but are shown in unison with the object on which they are found. At

any rate the plates depict comprehensive sections showing all the characteristics of the material and shape which, in nearly all cases, permit of a conception of the whole. Each of the objects reproduced was first photographed in order to obtain an objective basis free from the arbitrary conceptions of the draughtsman. The photographs served as guides for the watercolours which, copied from the originals, made an exact reproduction of the tints, in print, possible. The printing itself was carried out with the aid of all auxiliaries best suited to produce as natural a reproduction as possible.

In limiting ourselves to coloured ornament and decorations, a number of characteristic and important ones had of course to be omitted as being colourless. The conception "coloured" has not been literally interpreted. And as the title indicates, not only ornaments in the strict sense of the word, but also all forms of decoration are reproduced. The inclusion of an ornament depended solely on the degree of its practical applicability. In order to avoid repetition of the same motif, typical ornaments, or such as are important in the development of art, had often to be omitted. In spite of this the volume should prove valuable for the historian and the ethnologist. There are certainly few such opportunities as are offered in this work to recognize so easily the transference and spread of certain ornamental designs. Here, for instance, we can trace the following facts: how patterns passed from the Hittites, via Cyprus, to the North African Berbers; how ancient Mediterranean motifs found their way to Africa and East Asia; how the spiral ornament is met with among diverse nations. If, for instance we observe how ancient Elamic vessel ornamentations are still found on African calabashes, we may be inspired to make new investigations. Thus many problems arise in perusing this book, and hence their solution is promoted. The editor was not able within the scope of this work to contribute to the explanation of such and similar problems.

The explanations of the Plates are as brief as possible, but on the whole reliable. The museum inventory numbers, which are bracketed, permit of detailed investigation. As a rule bibliographical sources are not mentioned. The source has only been mentioned in the case of some examples which are not reproduced from original photographs, or which were not actually coloured from the original. In the latter case reliable coloured reproductions were used, and hence approximate correctness of colour is guaranteed. The captions on the Plates only serve the purpose of a general orientation, as it was often impossible to give the character and period of each item in the captions. In doubtful cases it will be necessary to consult the explanations to avoid mistakes. It was impossible to ascertain correct dates in the case of nearly all native work. But even in that of civilized peoples the dates are often merely approximate, as investigations are by no means finished. The term "Present Time" on the Plates usually includes the whole of the 19th Century, whereas the term "Modern Times" has a wider meaning.

Some of the Plates include items and patterns in different scales. It seemed unnecessary to give measurements, as the main object of the book is to reproduce ornamental decorations. However, attention has been drawn to the various techniques, in as far as they are not recognizable on the Plates. The object of the Index is to facilitate a general survey of the work. The editor may be permitted to draw attention to the fact that this Index makes mention of techniques which might be profitable nowadays, but are seldom employed (e. g. feather and fur mosaic work; bristle work, etc.).

The editor was only enabled to compile this volume in all its comprehensiveness by obtaining the permission of Geheimrat von Falke, Chief of the State Museums, to take the necessary photographs from among all the collections under his supervision. And thus it was possible to publish a book that at least conveys an idea of the wealth contained

in our museums. Both the publishers and the editor take this opportunity to express their thanks to Geheimrat von Falke. Thanks are also due to Professor Thilenius of the Hamburg Museum, and Professor Koch-Grünberg of the Linden Museum, Stuttgart. The editor further desires to express his thanks to Professor Ankermann, Dr. Baumann, Professor Brunner, Dr. Byhan, Professor Doebling, Dr. Eichhorn, Geheimrat Gaffron, Frau Gorki, Geheimrat Grünwedel, Professor Hagen, Professor Hambruch, Dr. Krickenberg, Dr. Kühnel, Professor v. Le Coq, Professor Lehmann, Professor F. W. K. Müller, Dr. Val. K. Müller, Professor Noak, Professor Preuß, Professor Sarre, Dr. Schachtzabel, Professor Schäfer, Dr. Scharff, Professor Hubert Schmidt, Professor Max Schmidt, Professor Robert Schmidt, Professor Schmitz, Dr. Stern, Dr. Stöcker, Geheimrat Schuchhardt, Dr. Trautz, Dr. Volbach, Professor Weber, Dr. Woll, Professor Wulff, Professor Zahn and Professor Zimmermann for their kind assistance and generous advice.

Finally, the editor would like to thank the two artists Messrs Bollacher and Tilke for their most important co-operation by drawing and painting the greater number of the plates with immense industry and fine artistic feeling.

Helmuth Theodor Bossert

CATALOGUE

PLATE I

The originals of Nos. 1, 5-7, 9-12, 14 are in the National Museum of Athens, Nos. 2, 3, 13, 15-21 in the Odessa Museum, Nos. 4 and 8 in the former Arts and Crafts Museum (Prehistoric Section), Berlin, and date from 4000-3000 B. C.

1, 7, 14. Earthenware vessels and fragments. Nos. 1 and 14 (restored) from Rakhmani, No. 7 from Tsangli (North Eastern Greece). After Wace-Thompson, "Prehistoric Thessaly" (Cambridge 1912), Plates IV₄, III₂, and I

2, 3, 13, 15-21. Earthenware vessels and fragments of same from Petreny near Bielzy (Bessarabia; Southern Russia). After E. von Stern, "Die prämykenische Kultur in Südeuropa" (Moscow 1906), Plates VI₂, IX₅, VI₆, VI₈, VIII₁, VI₇, VII₁₅, X₈, XII₁₀, and XI

4, 8. Earthenware vessels excavated by Prof. Hubert Schmidt in Cucuteni (Roumania). Culture A (not yet inventoried)

5, 6, 9-12. Earthenware vessels and fragments of same. 5, 6, and 9 from Sesklo, 10, 11, and 12 from Dimini (Thessaly; Northern Greece). After Tsountas, "Dimini and Sesklo" (Athens 1908), Plates 7₃, 7₂, 7₁, 9₁, and 2, and 11

PLATE II

The Originals of Nos. 1-3, 5, 6, 8, 10-12, 14 are in the Museum at Caodia (Crete). Nos. 4, 7, 9, 13 in the National Museum at Athens

1 and 6. Earthenware vessels from Mochlos (near Crete). After R. Seager, "Explorations in the Island of Mochlos" (Boston-New York 1912), Plates VII₁₁ 13 and 16, Middle Minoan Period I (2000-1800 B. C.)

2 and 3. Earthenware vessels from Cnossus (Crete). After A. Evans, "The Palace of Minos", London, 1921, Vol. I.), Plate 2c and b. Middle Minoan IIa (1800-1750 B. C.)

4 and 7. Earthenware vessels from Korakou (Greece). After C. Blegen, "Korakou" (Boston-New York, 1921), Plates V and VI₁₂. 2. Late Helladic Period (1550-1400 B. C.)

5. Earthenware vessel from Palaikastro (Crete). From photographs by H. Bossert, "Altkreta" (Berlin 1923), Fig. 166. Late Minoan (ca. 1600 B. C.)

8. Earthenware vessel from Cnossus (Crete). After A. Evans, "The Tomb of Double Axes" (London 1914), Plate IV. Late Minoan I (ca. 1600 B. C.)

9. Earthenware vessel (restored) from Phylakopi (Melos). After Bossert's illustrations, op. cit. III. 260. Late Minoan (about 1600 B. C.)

10 and 11. Earthenware vessels from Cnossus (Crete). Illustrations after Bossert op. cit. III. 149 and 148. Middle Minoan IIa (1800-1750 B. C.)

12. Earthenware vessel from Cnossus (Crete). Illustration after Bossert op. cit. III. 162. Middle Minoan III (1700-1600 B. C.)

13. Earthenware vessel from Pylos (Greece). Illustration after "Athenische Mitteilungen" 1909, Plate XXII. Late Minoan I (about 1600 B. C.)

14. Earthenware vessel from Cnossus (Crete). Illustration after Bossert op. cit., III. 156. Middle Minoan (1800-1700 B. C.)

PLATE III

The originals of Nos. 1-3, 11, 14, 15, 17, 18 are in the Museum of Candia (Crete), Nos. 4-10, 12, 13, 16, 19 in the National Museum at Athens

1 and 2. Cloth pattern on the aprons of two cup bearers. Fresco from Cnossus (Crete). Late Minoan II (1550-1400 B. C.)

3. Sample of cloth and hem of woman's dress. Fresco from Hagia Triada (Crete). Middle Minoan IIIa (1700-1650 B. C.)

4, 5 and 10. Pattern of floor frescos. Tiryns (Greece). Late Minoan III (1400-1200 B. C.)

6. Edging of a fresco. Tiryns (Greece). Late Minoan III (1400-1200 B. C.)

7-9. Part of gold ornament with inlay. Mycenae (Greece). "Shaft Tomb" Period (1750-1550 B. C.)

11 and 14. Small faience figures from Cnossus (Crete). Middle Minoan III (1700-1600 B. C.)

12. Pattern on the bronze blade of a dagger with gold and electron (amber) incrustations. Mycenae (Greece). "Shaft Tomb" Period (1750-1550 B. C.)

13 and 16. Mural frieze, frescos. Tiryns (Greece). Older period of Continental painting (1600-1400 B. C.)

15 and 17. Ornamentation (Fresco) on a sarcophagus. Hagia Triada (Crete). About 1400 B. C.

18. Fragment of a fresco with a row of columns. Cnossus (Crete). 1700-1550 B. C.

19. Pattern on woman's skirt. Fresco from Tiryns (Greece). 1400-1200 B. C.

PLATE IV

The originals of Nos. 1-4, 6, 8, 9, are in the Berlin Altes Museum (Vase Collection), Nos. 5 and 7 in private collection. All pieces date from about 1400-1100 B. C.

1, 2 and 9. Pattern on earthenware vessels from Crete (Vase Inv. 2942, 2936, 4947)

3 and 8. Pattern on earthenware vessels from Crete (Furtwängler 20 and 19)

4. Example of double-handled mug from Aliki (Furtwängler 26)

5 and 7. Pattern on earthenware vessels. Unknown provenance

6. Earthenware jug from Cyprus (Furtwängler 22)

PLATE V

All the originals of this Plate are in the Altes Museum (Vase Collection), Berlin, and date from the 9th and 8th Centuries B. C.

1. Pattern of an earthenware vessel from Greece (Vase Inv. 4490)

- 2 and 10. Part view of body of an earthenware jug from Boeotia (Vase Inv. 3310)
3. Pattern on body of an earthenware vessel from Boeotia (Vase Inv. 3143, 1)
4. Pattern on vase of an earthenware jug from Menidi (Vase Inv. 3367)
- 5 and 8. Part view of body and neck of an earthenware vessel from Athens (Vase Inv. 4506)
- 6 and 7. Part view of an Attic earthenware vessel (Vase Inv. 3203)
9. Part view of an earthenware vessel from Boeotia (Vase Inv. 3143, 6)

PLATE VI

All the originals of this Plate are in the Altes Museum (Vase Collection), Berlin, and date from the 8th and 7th Centuries B. C.

1. Pattern from body of a crater from Rhodes (Vase Inv. 2941)
2. Pattern on the body of an amphora from the western slope of Hymettus (Furtwängler 56)
3. Pattern on a Boeotian earthenware vessel (Vase Inv. 3674)
- 4 and 7. Lid and side of a small earthenware box from Thebes (Furtwängler 306)
5. Pattern on a basket-shaped earthenware vessel from Thebes (Vase Inv. 3184)
- 6 and 8. Part views of an earthenware saucer from Melos (Furtwängler 52)
9. Pattern on a bellied earthenware dish from Kameiros (Rhodos) (Furtwängler 293)
10. Part view of a Boeotian earthenware vessel (Vase Inv. 3337)

PLATE VII

The original Nos. 1 and 3 are in the Archaeological Collection of the Berlin University, Nos. 2, 4-10 in the Altes Museum (Vase Collection), Berlin, and date from the 7th and 6th Centuries B. C.

- 1 and 3. Pattern on an Attic amphora from Vulci (Furtwängler 1708)
2. Plate from Kameiros (Rhodos) (Furtwängler 298)
- 4, 6, 7, 9. Ornaments from earthenware sarcophagi from Klazomenai (Inv. 3145, 3353 [Nos. 6 and 9 from one sarcophagus], 4824)
5. Corinthian bowl (Furtwängler 956)
8. Attic amphora (Furtwängler 1700)
10. Corinthian lekythos from Nola (Furtwängler 343)

PLATE VIII

All the originals of this Plate are in the Altes Museum (Vase Collection), Berlin. No. 1 dates from the 7th Century, Nos. 2-12 from the 6th Century B. C.

1. Part view of a Corinthian vessel with lid (Furtwängler 990)

2. Part view of a Corinthian amphora from Nola (Furtwängler 1653)
- 3, 5, 6, 9. Part views of a Corinthian crater from Caere (Furtwängler 1655)
4. Part view of a Chalcidian amphora (Vase Inv. 3153)
- 7, 8, 10. Part views of an Attic crater from Chiusi (Furtwängler 1722)
11. Pattern on an Attic jar (Furtwängler 1731)

PLATE IX

The originals of Nos. 1, 6, 8, 9, 11-19 are in the Altes Museum (Vase Collection), Berlin, Nos. 2-5, 7, 10 in the Archaeological Collection of the Berlin University

1. Earthenware vessel from Cyprus. Middle Bronze Age (2000-1500 B. C.) (Furtwängler 141)
- 2, 5, and 6. Earthenware vessels from Cyprus. Late Bronze Age (1500-1200 B. C.) (D6, D131, Furtwängler 119)
- 3 and 8. Earthenware vessels with engraved ornamentation from Cyprus (No. 8 from Dali). Early Bronze Age (4000-3000 B. C.) (D5, Furtwängler 155)
4. Cyprian jug. Early Iron Age (1200-750 B. C.) (D 690)
7. Bellied earthenware vessel from Apulia (Italy). 7th Cent. (D. 449)
- 9 and 11. Part view of an amphora from Dali (Cyprus). Iron Age (Graeco-Phoenician, 750-600 B. C.) (Furtwängler 63)
10. Late Mycenaean kalathos from the Island of Calymnos. 1400-1200 B. C. (D 12)
12. Earthenware vessel from Cyprus. Early Iron Age (1200-750 B. C.) (Ter. Inv. 6682, 94)
- 13-15, 17-19. Earthenware vessels from Cyprus (Nos. 13 and 18 from Larnaka, 14 and 15 from Dali). Iron Age (Graeco-Phoenician, 750-600 B. C.) (Ter. Inv. 6682, 93, Furtwängler 72, Furtwängler 71, Ter. Inv. 6682, 91, Ter. Inv. 6684, 1, Furtwängler 68)
16. Earthenware vessel from Dali (Cyprus). Early Iron Age (1200-750 B. C.) (Vase Inv. 3279)

PLATE X

The originals of Nos. 1, 4, 11-13, 15-18 are in the Archaeological Collection of the Berlin University, Nos. 2, 3, 5, 8-10, 14 in the Kaiser-Friedrich-Museum (Asia Minor Section), Berlin, Nos. 6 and 7 in the Altes Museum (Vase Collection), Berlin. All items, with the exception of No. 3, belong presumably to the period of 2000-1000 B. C. No. 3 dates about the 7th Cent. B. C.

1. Fragment of a bowl from Kultepe (D 103)
- 2, 5, 9-18. Fragments from Boghazköi (VA 3771, VA 4789, VA 4805, VA 4674, D 952 [Fragments 11-13 and 15-18 are grouped under this No.], VA 3767)
3. Faience vessel from Sendshirli (S 2487)

4. Hittite earthenware vessel of unknown provenance (D 379)
- 6 and 7. Part view of earthenware vessels from Kylepe (Vase Inv. 5928, Inv. 30052)
8. Part view of an earthenware vessel from Boghazköi (VA 3594)

PLATE XI

All the earthenware vessels on this Plate are in the Louvre in Paris and belong to the period shortly before 3000 B. C. (1st Period of the Proto-Elamite Style)

1. Earthenware vessel from Susa. From photograph by E. Pottier "Corpus Vasorum Antiquorum", Fascicule 1 (Paris) Plate I 1 (Inv. 12672)
2. Pottier, op. cit., Pl. VII 10 (Inv. A 6704)
3. Pottier, Pl. VIII 19 (Inv. 12673)
4. Pottier, Pl. VIII 7 (Inv. A 7041)
5. Pottier, Pl. III 8 (Inv. 12703)
6. Pottier, Pl. VIII 16 (Inv. 11618)
7. Pottier, Pl. IX 7 (Inv. 11617)
8. Pottier, Pl. I 17 (Inv. A 7930)
9. Pottier, Pl. V 17 (Inv. 12101)
10. Pottier, Pl. II 23 (Inv. 13913)
11. Pottier, Pl. IX 18 (Inv. 12100 bis)
12. Pottier, Pl. I 8 (Inv. 13927)
13. Pottier, Pl. VI 11 (Inv. A 6618)
14. Pottier, Pl. III 14 (Inv. A 6962)
15. Pottier, Pl. IX 11 (Inv. 11620)

PLATE XII

The originals of Nos. 1, 4, 6, 9 are in the Louvre, Paris, Nos. 2, 3, 5, 7, 8, 11 in the Kaiser-Friedrich-Museum (Asia Minor Section), Nos. 10 and 12 in the same museum (Islamic Section), Berlin

1. Part view of a faience frieze from the palace in Persepolis. 6th Cent. B. C.
- 4, 6, 9. Pattern on robes (in faience) from the palace in Persepolis. 6th Cent. B. C.
2. Faience knob from Assur. Mid 9th Cent. B. C. (VA 5905)
3. Part of a faience tile from Assur. 9th (?) Cent. B. C. (VA 8336)
5. Small glass vessel from Babylon. Circa I A. D. (VA 8452)
7. Earthenware vessel from excavations in Surgu and El Hibba (Sout Babylonia) Circa 3000 B. C. (VA 2206)
8. Late Babylonian glass vessel from Babylon (VA 8449)
- 10 and 12. Part view of a Sassanian or early Islamic bowl of unknown provenance. 7th-9th Cent. A. D. (J 3763)
11. Part of a Samaritan gravestone. 15th-16th Cent. A. D. (VA 3374)

PLATE XIII

All the silk fabrics are in the Berlin Arts and Crafts Museum (Castle)

1. Sassanian fabric with hunting scenes showing East-Roman influence. King Bahram V. is portrayed robbing a lioness of her cubs. The photograph from Otto v. Falke's "Kunstgeschichte der Seidenweberei", 2nd ed. (Berlin 1923) Ill. 69. Persia 6-7th Cent. A. D. (78, 630)
2. Fabric with figures of griffins. Photographs in O. v. Falke, op. cit. 1st ed. (Berlin 1921) Ill. 152. Persia, circa 1000 A. D. (84, 279)
3. Fabric with figures of elephants from a Spanish church. Photographs from O. v. Falke, op. cit. 2nd ed. Ill. 93. Persia 7th-9th Cent. (92, 323)
4. Fabric with figures of coaks. From O. v. Falke, op. cit. 2nd ed. Ill. 65. Persia ca. 600 A. D. (87, 769)
5. Jesdegerd silk from the church of St. Ursula, Cologne. From O. v. Falke, op. cit. 2nd ed. Ill. 68. Persia, prior to 640 A. D. (81, 13)

PLATE XIV

All the originals of this Plate are in the Altes Museum (Egyptian Section), Berlin. They all belong to the early Egyptian period (5000 B. C.)

- 1 and 4. Part view of an earthenware vessel. Said to be from Gebelin (Inv. No. 15129)
2. Pattern on an earthenware vessel. Unknown provenance (Inv. No. 13500)
3. Pattern on neck of an earthenware vessel from Abusir el Meleg, grave 51 i 5 No. 1 (Inv. No. 18641)
5. Part view, picture of a ship on earthenware vessel. Provenance unknown (Inv. No. 20304)
6. Part view of an earthenware vessel. Provenance unknown (Inv. No. 13822)
7. Earthenware vessel from Abusir el Meleg, grave 10c1 No. 2 (Inv. No. 19188)
8. Pattern of an earthenware vessel. Provenance unknown (Inv. No. 13825)
9. Earthenware vessel with flamingo from Abusir el Meleg, grave 51 d 10 No. 2 (Inv. No. 18564)

PLATE XV

All the originals are in the Altes Museum (Egyptian Section), Berlin

1. Faience blossom (nymphaea), clasp of a pearl necklet with inlay. From Amarna. Ca. 1350 B. C. (Inv. No. 22040)
2. Piece of a frieze made of inlaid faience flowers, grapes, etc. Provenance unknown. XVIIIth Dynasty, 1580-1350 B. C. (Inv. No. 15451)
- 3 and 4. Same as No. 1 (Inv. Nos. 22208, 21887)
5. Nymphaea caerulea made of faience; probably from a canopy. From Amarna. Ca. 1350 B. C. (Inv. No. 21878)

6. Faience disks from Tell el Jahudije. XXth Dynasty, 1200—1090 B. C. (Inv. Nos. 7964 and 7961)
7. *Nymphaea caerulea*, faience. From Amarna. Ca. 1350 B. C. (Inv. No. 21943)
8. Part view of a floor fresco. From the palace of Amenophes IV. (1375—1358 B. C.) in Amarna (Inv. No. 15336)
9. Fragment (restored) of a ceiling painting on Nile mud. From a grave near Dér el Medine. New Kingdom, 1580—712 B. C. (Inv. No. 21761.)
10. Ornament on body of an earthenware vessel. Unknown provenance. XVIIIth Dynasty, 1580—1350 B. C. (Inv. No. 611)
- 11 and 13. Pattern on an earthenware vessel. Unknown provenance. XVIIIth Dynasty, 1580—1350 B. C. (Inv. No. 14412)
12. Fragment of a faience tile. From Amarna. Circa 1350 B. C. (Inv. No. 21903)

PLATE XVI

All the originals of this Plate are in the Altes Museum (Egyptian Section), Berlin. All patterns are from wooden coffins of the Late New Kingdom (about 945—712 B. C.); unknown provenance

- 1 and 2. Inv. No. 11978. Cf. Pl. XVII 3 and 13
- 3, 6, 11. Inv. No. 8502. Cf. Pl. XVII 6
4. Inv. No. 52. Cf. Pl. XVII 9
5. Inv. No. 4
7. Vessel from Dér el Medine. XVIIIth Dynasty, 1580—1350 B. C. (Inv. No. 21325)
8. Inv. No. 54
9. Inv. No. 10832. Cf. Pl. XVII 4 and 7
10. Inv. No. 3
- 12 and 13. Inv. No. 11981. Cf. Pl. XVII 12

PLATE XVII

All the originals of this Plate are in the Altes Museum (Egyptian Section), Berlin. All patterns are from wooden coffins of the Late New Kingdom (ca. 945—712 B. C.); unknown provenance

1. Inv. No. 7478
- 2, 5, 11. Inv. No. 28
- 3 and 13. Inv. No. 11978. Cf. Pl. XVI 1 and 2
- 4 and 7. Inv. No. 10832. Cf. Pl. XVI 9
6. Inv. No. 8502. Cf. Pl. XVI 3, 6, 11
8. Earthenware vessel, restored, from Dér el Medine. XVIIIth Dynasty, 1580—1350 B. C. (Inv. No. 21327)
9. Inv. No. 52. Cf. Pl. XVI 4
10. Inv. No. 7325
12. Inv. No. 11981. Cf. Pl. XVI 12 and 13

PLATE XVIII

All the originals of this Plate are in the Altes Museum (Egyptian Section), Berlin

1. Fragment of mural painting, altars with lotus bouquet. West side of Thebes. XVIIIth—XXIst Dynasty, 1580—1200 B. C. (Inv. No. 18532)

2 and 11. Pattern on robe of an upright figure of Osiris in the shape of a mummy; wood. Unknown provenance. Late period, 712—332 B. C. (Inv. No. 900)

3, 6, 9, 12, 13. Pattern on a carton mummy case from Hawara. Late Ptolemaic, 2nd—1st Cent. B. C. (Inv. No. 10975)

4. Faience pectoral in shape of a temple. In the middle a scarab, flanked by Isis and Nephthys. Unknown provenance. Late period (Inv. No. 1984)

5. Faience sparrow-hawk. Probably a hieroglyph for inlay work. Unknown provenance. Late period, 712—332 B. C. (Inv. No. 4541)

7. Wooden grave stele. Unknown provenance. Late New Kingdom, 1580—712 B. C. (Inv. No. 7772)

8. Mummy of cat wrapped in lozenge pattern linen bandage. Thebes. Late period (Inv. No. 655)

10. Pectoral of a wooden Osiris figure. Unknown provenance. Late period (Inv. No. 20609)

14. Mummified jackal in linen wrapped in cross pattern. From Abusir el Meleq. Late period, 712—332 B. C. (Inv. No. 17186)

PLATE XIX

The originals of Nos. 1, 3, 4, 6—13 and 16 are in the Kaiser-Friedrich-Museum (Early Christian Section), Nos. 2, 5, 14 and 15 in the Altes Museum (Egyptian Section), Berlin

1. Inner part of earthenware bowl purchased in Cairo. Coptic. 5th—6th Cent. (Inv. No. 6636)
2. Ivory mirror lid in shape of two doors. Coptic 4th—5th Cent. (Inv. No. 14226)
3. Glazed bowl from S. Russia. Byzantine. 12th—13th Cent. (Inv. No. 4863)
- 4 and 6. Pattern from an earthenware fragment from Ashmunein. Coptic. 5th—6th Cent. (Inv. No. 6096)
5. Glass mosaic-work, head of Bes. From Alexandria? Ptolemaic or Roman (Inv. No. 9744)
7. Fragment of an earthenware plate. Purchased in Cairo. Coptic. 6th—7th Cent. (Inv. No. 6640)
8. Earthenware vessel from Luxor. Coptic. 4th—5th Cent. (Inv. No. 3499)
9. Part view of a bottle with handles from Gize. Coptic. 6th—7th Cent. (Inv. No. 3504)
- 10—12. Pattern on fragments from Ashmunein. 5th—6th Cent. (Inv. Nos. 6095, 6100, 6256)
13. Earthenware dish from Egypt. 5th—6th Cent. (Inv. 3355)
14. Above. Glass mosaic-work from a glass factory in Elephantine. 300 B. C. (Inv. No. 18324)
14. Below. Glass mosaic-work, inlays from a plaster coffin from the Siwa Oasis. Ptolemaic or Roman (Inv. No. 18484)
15. Glass rod, inlay in millefiori technique from Elephantine. Ptolemaic or Roman (Inv. No. 18299)

16. Glazed dish. Byzantine. From Constantinople. 12th Cent. (Inv. No. 6757)

PLATE XX

The originals of Nos. 1, 7, 8, 10-12 are in the Altes Museum (Egyptian Section), Nos. 2-6, 9, 13 in the Kaiser-Friedrich-Museum (Early Christian Section), Berlin

1. Middle piece of a linen dress. Coptic. (Alexandrian-Hellenic) 3rd-4th Cent. (Inv. No. 11444)
2. Braiding. Coptic. 6th Cent. (Inv. No. 6897)
3. Braiding (restored). (Coptic Alexandrian-Hellenic) 3rd-4th Cent. (Inv. No. 6978)
4. Fabric from Achmim. Alexandrian-Hellenic. 3rd-4th Cent. (Inv. No. 6986)
5. Braiding. Coptic. 6th. Cent. (Inv. No. 4597)
6. Wool fabric. Coptic. 5th Cent. (Inv. No. 9085)
- 7 and 10. Pectoral and pattern on a shirt hood, from Achmim. Coptic. 4th Cent. (Inv. No. 17521)
8. Pattern on the hood of a child's dress, from Achmim. Coptic. 5th.-6th Cent. (Inv. No. 17526)
- 9 and 13. Braiding. Coptic. 5th Cent. (Inv. No. 6236)
11. Pattern on the hood of a child's dress. Coptic. 4th-5th Cent. (Inv. No. 17525)
12. Wool fabric on linen. Coptic (Alexandrian-Hellenic) 4th Cent. (Inv. No. 14228)

PLATE XXI

All the originals of this Plate are in the Altes Museum (Egyptian Section), Berlin

- 1, 3, 8, 10, 11, 12. Pieces let into linen dresses. Nos. 3 and 11 from Achmim. Coptic (Hellenic). 4th Cent. (Inv. Nos. 11438, 10054, 11442, 11457, 10055, 11428)
2. Part of the buckle of a linen dress. Coptic (Hellenic). 4th Cent. (Inv. No. 11451)
- 4 and 6. Pattern on a longitudinal strip of a linen cloth. Coptic (Hellenic). 4th Cent. (Inv. No. 11424)
5. Pattern on a shirt. Coptic. 5th-6th Cent. (Inv. No. 17522)
7. Pattern on a woollen cloth. Coptic. 5th-6th Cent. (Inv. No. 11456)
9. Sleeve facing from Achmim. Coptic. 5th Cent. (Inv. No. 10058)

PLATE XXII

The originals of Nos. 1, 3-9 are in the Kaiser-Friedrich-Museum (Early Christian Section), No. 2 in the Altes Museum (Egyptian Section), Berlin

1. Pattern on braiding. Coptic. 5th Cent. (Inv. No. 9065)
2. Pattern on braiding; in the middle: Mary and Jesus. Purchased in Achmim. Coptic. 5th-6th Cent. (Inv. No. 17530)
3. Wool fabric on linen. Coptic. 4th Cent. (Inv. No. 4648)

4. Wool fabric on linen. Coptic. 5th Cent. (Inv. No. 6959)

5. Wool embroidery. Coptic. 6th-7th Cent. (Inv. No. 6695)

6. Printed linen fabric. Coptic. 6th-7th Cent. (Inv. No. 6824a)

7. Silk fabric. Coptic. 4th-5th cent. (Inv. No. 9165)

8. Wool fabric. Coptic. 4th Cent. (Inv. No. 9073)

9. Silk fabric. Unknown provenance. Syriac or Coptic. 5th-6th Cent. (Inv. No. 9264)

PLATE XXIII

All the originals of this Plate are in the Kaiser-Friedrich-Museum (Islamic Section), Berlin

- 1-5, 7. Fatimite silk embroidery on linen. From Egyptian graves. 10th-12th Cent. (J. 3100, 3121 [Nos. 2 and 4 from one piece], 3142, 3098, 3099)
- 6 and 8. Part views of a silk carpet in Gobelin technique. Persia, ca. 1600 (J 2577)

PLATE XXIV

All the originals of this Plate are in the Kaiser-Friedrich-Museum (Islamic Section), Berlin

1. Pattern (dragon and phoenix) on an Anatolian carpet. 14th Cent. (J 4)
2. Part view of a garden carpet. N.W. Persia. 17th Cent. (J 3089)
3. Star pattern on a ushak. Asia Minor. 16th Cent. (J 19)
4. Part view of an Armenian carpet. Ca. 1500 (J 3)
- 5 and 8. Medallion and edging of a Persian pile carpet. Mid 16th Cent. (J 1)
6. Part view of an Armenian pile carpet. Ca. 1500 (J 2)
7. Corner of a Turkish carpet made by the Royal Factory. 17th Cent. (J 30)

PLATE XXV

The carpet is in the Kaiser-Friedrich-Museum (Islamic Section), Berlin

- 1-8. Part views of a so-called vase carpet. Persia. Mid 16th Cent. (J 2656)

PLATE XXVI

All the originals of this Plate are in the Kaiser-Friedrich-Museum (Islamic Section), Berlin. Nos. 1 and 7 and 10 were lent by the Arts and Crafts Museum

- 1-7 and 10. Turkish mural tiles. Presumably from Isnik (Nicaea). 16th-17th Cent. (73, 770; 77, 508a-b; 73, 771; 91, 140; 91, 131; 91, 139; 77, 555; 73, 766)
8. Faience tile from Brussa (Asia Minor). 15th Cent. (J 481)
9. Faience mosaic-work from Meshhed (Persia). 15th Cent. (J 3916)

PLATE XXVII

All the originals of this Plate are in the Kaiser-Friedrich-Museum (Islamic Section), Berlin. Nos. 1 and 4 were lent by the Arts and Crafts Museum

- 1 and 4. Tiles from Damgan (Persia). 13th Cent. (A 196 m and h)
- 2 and 3. Tiles from Syria. 14th Cent. (J 3988 and 3987)
5. Small faience bowl (restored). Syria. 14th Cent. (J 1812)
6. Fragment of tile. Raghes (Persia). 13th Cent. (J 489)
7. Flat engraved dish. Persia or Asia Minor. 13th Cent. (J 2661) Cf. Pl. XXVIII 8 (J 948 and 1507)
8. Tile. Persia. 15th Cent. (J 2630)
- 9 and 11. Pattern on two bowls. Persia. 13th Cent. Cf. Pl. XXVIII 8 (J 948 and 1507)
10. Bottom of bowl (on which is depicted a cupping scene). Raghes (Persia). 13th Cent. (J 4350)
12. Bottom of a vessel. Syria. 13th Cent. (J 324)

PLATE XXVIII

All the originals of this Plate are in the Kaiser-Friedrich-Museum (Islamic Section), Berlin

1. Faience bowl. Persia. 10th—11th Cent. (J 2844)
2. Bottom of a vessel. Raghes (Persia). 13th cent. (J 3856)
3. Turkish plate. Nicaea. 17th Cent. (J 2353)
- 4 and 7. Bottom and rim of a vessel. Raghes (Persia). 13th Cent. (J 2248)
5. Bottom of bowl with enamel glaze. Mameluke, Egypt. 14th—15th Cent. (J 1470)
6. Pattern on the bottom of a bowl. Syria. 13th Cent. (J 140)
8. Pattern on a bowl. Persia. 13th Cent. Cf. Pl. XXVII 11 (J 1507)
9. Bowl bottom. Syria. 13th Cent. (J 159)
10. Bowl bottom. Persia. 13th Cent. (J 3841)
11. Albarello from Sultanabad (Persia). 14th Cent. (J 3839)
12. Faience vase. Asia Minor or Syria. 14th Cent. (J 1188)
13. Faience bowl from Sultanabad (Persia). 14th Cent. (J 2016)

PLATE XXIX

The panelling is in the Kaiser-Friedrich-Museum (Islamic Section), Berlin

1—9. The painted wainscot, of which this Plate shows part, is from a private house in Aleppo in Syria. According to an inscription over the door of the panelling the building was erected in September—October 1603. The painter was probably a Mohammedan Syrian. Persian and Turkish influences are noticeable. The builder of the house was a Christian. Hence the Christian motifs in the scenes depicted (J 2862)

PLATE XXX

All the originals of this Plate are in the Ethnological Museum (African Section), Berlin

1. Water-jug painted in matt colours. Tanger (Morocco) (III B 557)
2. Glazed censer with open-work lid. Saffi (Morocco) (III B 897)
3. Varnished earthenware vessel used by the Kabyles (III B 286)
4. Glazed vessel. Morocco (III B 1669)
5. Earthenware vessel. Nabeul (Tunis) (III B 1147)
6. Whitewashed pot, painted. Rabat (Morocco) (III B 564)
7. Glazed pot with beak spout. Saffi (Morocco) (III B 526)
8. Glazed ink-pot. Presumably from Morocco (III B 156)
9. Drinking vessel. Marrakesh (Morocco) (III B 348)
10. Deep plate. Bougie (Algiers) (III B 1429)
11. Glazed figure of a camel. Beni Douala and Beni Aissi (Algiers) (III B 1456)
12. Triple vessel used by the Kabyles (III B 1956)
13. Glazed bowl. Sfax (S. Tunis) (III B 1503)
14. Glazed bowl. Fez (Morocco) (III B 995)
15. Hand drum, earthenware; lower part covered with skin. Marrakesh (Morocco) (III B 643)
16. Glazed clay vase. Fez (Morocco) (III B 631)
17. Glazed flower-pot. Saffi (Morocco) (III B 864)

PLATE XXXI

All the originals of this Plate are in the Hamburg Ethnological Museum

- 1 and 3. Part views of woman's outer garment, woollen fabric from the Matmata Mts. (S. Tunis) (13. 29:163)
2. Woven wallet worn on strap, from Tunis (Nefta) (48:05)
- 4—8, 10, 12. Pattern on a woven counterpane (13. 29:312)
- 9, 11, 13. Pattern on a woven Berber carpet (12. 70:251)

PLATE XXXII

All the originals of this Plate are in the Hamburg Ethnological Museum

1. Man's shoe. Tripolis (13. 29:109)
- 2, 4, 7. Part views of a bridle. (12. 148:1828)
- 3 and 8. Leather cushion case. Pattern incised and smoothed, Moorish, Marrakesh (Morocco) (12. 70:132 and 135)
5. Slippers. Morocco? (18. 21:22)
6. Woven wallet worn on strap. Tunis (Tosher) (63. 05)

9. Leather messenger's bag. Tunis (Nefta) (49.05)
10. Embroidered leather powder-flask. Tripolis (13.29:114)
11. Pattern on leather wallet. Moroccan (12.70:126)
12. Woven fans. Biskra (Algiers) (51.05)
13. Embroidered hood worn by Bedouin children. Tripolis (13.29:103)

PLATE XXXIII

All the originals of this Plate are in the Hamburg Ethnological Museum

1. Leather cushion case. Hagar-Tuareg (13.29:117)
2. Leather butter box used by the Tuareg (Sahara) (2072:10)
3. Leather Tuareg butter box (461:10)
4. Part view of a Hagar-Tuareg leather clothes bag (13.29:194)
5. Tuareg leather butter box (2071:10)
6. Part view of a Tuareg leather saddle (17.12.1)
- 7 and 9. Fabric, "King's Cover" used by the Tuareg and in Liberia (684:05)
- 8 and 11. Part view of a leather pillow-case used by the Hagar-Tuareg (13.29:137)
10. Tuareg leather butter-box (462:10)
12. Tobacco-box, leather, Tuareg (11.1:1151)

PLATE XXXIV

All the originals of this Plate are in the Berlin Ethnological Museum (African Section)

1. Riding-boot of multicoloured leather. Haussa (III C 16414 a)
2. Leather bag with coloured Haussa embroidery (III C 5549)
3. Riding-boot. Djegga (Haussa) (III C 7096 a)
- 4 and 6. Leather dagger sheath. Chad Lake countries (III C 21427 and 21429)
5. Koran case. Niger (III C 2780)
7. Leather letter-case with three divisions. Kaura (Samfara; Haussa) (III C 16751)
8. Part view of a leather bag. Haussa III C 6466)
9. Part view of an old leather case. Begharme (Haussa) (III C 15281 b)
- 10 and 11. Part view of a saddle-cloth trimmed with green leather. Purchased in Shagari (between Gandu and Sokoto; Haussa) (III C 15544 and 15545)

PLATE XXXV

All the originals of this Plate are in the Berlin Ethnological Museum (African Section)

1. Part view of a Haussa tobe (III C 16423)
- 2 and 5. Part views of a woman's hand embroidered pair of breeches. Abyssinia (III A 2186)

3. Breeches of blue, white and red striped cotton fabric embroidered in green. Haussa (III C 16419)
- 4 and 7. Front view of two cotton silk embroidered women's shirts. Bornu (III C 15331 and 15330)
6. Part view of a woman's embroidered cloak. Abyssinia (III A 2192)

PLATE XXXVI

All the originals of this Plate are in the Berlin Ethnological Museum (African Section)

1. Pattern on a piece of cloth composed of red and blue-white strips sewn together and embroidered. Haussa (III C 17072)
- 2 and 7. Men's caps from Bali (N.W. Cameroon) No. 2: cotton fabric embroidered with red and blue wool. No. 7, knitted cotton, with inserted blue and red cloth pieces (III C 5512 and 24306)
3. Crocheted cap with animal patterns. Bagam (N.W. Cameroon) (III C 23680)
- 4, 8, 10. Pattern on plush-like mats woven out of raffia palm leaves. Bakuba (III C 5124, 4117, 4416)
5. Ornamentations on a sword sheath made of raffia strips; covered with pieces of cloth and sewn with cotton. Glass bead edgings. Bamum (N.W. Cameroon) (III C 25048b)
6. Man's Cotton cap. Bamendzing (N.W. Cameroon) (III C 25750)
9. Pattern made of various coloured pieces of cloth on a wallet from Old Calabar (III C 526)

PLATE XXXVII

All the originals of this Plate are in the Berlin Ethnological Museum (African Section)

- 1 and 3. Woven hats. Darfur (III A 1639 and 1638)
2. Basket bowl. Bornu (Lake Chad) (III C 15362)
- 4 and 6. Mecca caps. Probably imported. No. 4 from Wadai (Eastern Sudan), No. 6 Darfur. cf. Pl. LX 10-12
5. Dish lid with woollen tassels. Darfur (III A 1640)
- 7 and 9. Basket plate. Darfur (III A 2407 and 835)
8. Pattern on a straw mat. Lamu (Swahili) (III E 1617)
- 10 and 12. Abyssinian baskets (III A 1028 and 1027)
11. Basket with woollen tassels. Darfur (III A 834)

PLATE XXXVIII

All the bead embroideries on this Plate are in the Berlin Ethnological Museum (African Section)

1. Woman's small cap with frog pattern. Bamum (N.W. Cameroon) (III C 25085)
2. Head-gear. Shuli (Upper Nile) (III A 1105)
3. Man's cap with chameleon pattern. Bamum (IX B 333)

4. Woman's loin-cloth. Bagamoyo. (Ger.+E.Africa, coast) (III E 4332)
5. Pattern on woman's loin-cloth. Zulu (III D 3337)
6. Apron with cowrie pendants. Mundang (N. Cameroon) (III C 24291)
7. Bottle with chameleon stopper. Bamum (III C 20707)
8. Pattern on a belt. Mombassa (Coast of Brit. E. Africa) (III E 12409)
- 9 and 11. Men's combs. Wayao (Southern Ger.+ E. Africa) (III E 3133 and 3136)
10. Small apron worn by married women from the forehead over the face. Basuto (III D 3897)
12. Apron for young girls. Makua and Mura (Southern German E. Africa) (III E 6142a)
- 13 and 17. Pattern on a palm wine calabash. Bamum (III C 25933)
14. Tobacco-pipe stem. Bangwa (N.W. Cameroon) (III C 9814a)
15. Body of calabash. N.W. Cameroon (III C 21029a)
16. Loin ornament worn by Mangandsha women (Lake Nyassa) (III E 3228)
18. Girls loin-cloth pattern. Zulu (III D 3335)
19. Pattern on dancing mask (cloth). Bangwa (III C 21440)
20. Apron pattern. Basuto (III D 3894)

PLATE XXXIX

All the gourds on this Plate are in the Berlin Ethnological Museum (African Section)

1. Bowl to store food. Sugu. (French W. Africa) (III C 6179b)
2. Carved calabash. Nupe (Lower Niger) (III C 28268)
3. Pumpkin bowl. Tchamba (Benuë) (III C 11549)
4. Pumpkin bowl. Probably Calabar (III C 26818b)
5. Pumpkin bowl. Durrú (North Cameroon) (III C 22665)
6. Pumpkin vessel. Bamum (III C 20721)
7. Calabash. Hausa (III C 15121)
8. Drinking vessel. Bamum (III C 25293)
9. Vessel. Bamum (Hausa work) (III C 25251)
10. Pumpkin vessel. Lakka (N. Cameroon) (III C 30209)
- 11 and 14. Pumpkin bowls. Perhaps Lakka (III C 30203 and 30205)
- 12 and 16. Bowls with burnt-in drawings. Adamaua (Middle Cameroon) (III C 19190 and 19191)
13. Calabash with burnt-in patterns. N. Angola (III C 1872)
15. Calabash. Keaka (N.W. Cameroon) (III C 20169a)

PLATE XL

All the originals on this Plate are in the Berlin Ethnological Museum (African Section)

- 1 and 3. Masks representing Buffalo heads. Cameroon (III C 3752 and 3751)
2. Oar-blade with the word "Batanga". Cameroon (III C 2814)
- 4 and 12. Front and under side of an oar-blade. Cameroon (III C 1941)
5. Ox-head mask. Cameroon (III C 22611)
- 6 and 8. Dance gear. Duala (III C 32516 and 32517)
- 7 and 9. Parts of boat ornaments. Cameroon. Cf. Pl. XLI 10 (III C 1924 c and i)
- 10 and 14. Front and under side of an oar-blade. Cameroon (III C 1660)
11. Oar-blade. Duala (III C 30502)
13. Calabash. Cameroon (III C 1926)
15. Ornament of a helmet-like headgear carved in bokuka wood. Cameroon (III C 3744)

PLATE XLI

All the originals of this Plate are in the Berlin Ethnological Museum (African Section)

1. War drum from the village of Alombo. Jassa (Pangwe) (III C 14487)
2. Head with movable lower jaw. Old Calabar (III C 10487)
3. Mask with beard made of grass blades. S.E. Bakuba (III C 26361)
4. Head, top part of which forms the upper end of a door-jamb. From the village of Ntoko, Likuala Mossaka (French Congo) (III C 29973)
5. Doors. Akelle (Ogove-District) (III C 1649)
6. Drinking vessel. Bateke (Lower Congo) (III C 4572)
7. Clay pipe bowl, front view, in the shape of a long shield. Uganda (III E 4192)
8. Water jar. Djen Benuë (III C 15477)
9. House-door from the village of Lemba. Wambundu. (Lower Congo) (III C 4394)
10. Boat ornament. Duala (Cameroon). (III C 1924g) Cf. Pl. XL 7 and 9
- 11 and 12. Earthenware vessels, purpose unknown, encrusted with hens and mug-shaped bowls. Hausa (III C 29869a and 29873)
13. Terra cotta lamp supported by three guinea-hens. Keffi (Hausa States) (III C 16325)
14. Terra cotta lamp. Hausa (III C 16719)
15. Terra cotta vessel for witchcraft and fumigating purposes. Djukum (Benuë) (III C 18456b)

PLATE XLII

The originals of Nos. 5, 9, 11-13, 15-19 are in the Art Collection of the Jewish Community in Berlin. The location of the other examples is noted below

- 1 and 3. From a parchment manuscript of the Haggadah in the Sarajevo Landesmuseum. Hispano-Jewish work dating end 13th, beginning 14th Cent. From Müller and v. Schlosser, "Die Haggadah von Sarajevo" (Vienna 1898, Frontispiece and p. 21)
2. Heading of a parchment document (Ketubah) from Ancona, Italy, 1776. (Private Collection of Chief Rabbi Dr. M. Gaster, London.) From Gaster "The Ketubah, A Chapter from the History of the Jewish People" (1923)
4. From a parchment manuscript (St. Petersburg Library Ms 1153). North Africa, 15th Cent. From Stasof-Gunzburg "L'Ornement hébraïque (Berlin 1905), Pl. XX 2
- 5, 9, 15, 17 and 18. Part view of a curtain before the sacred Ark of the Covenant presented 1764. From the Old Synagogue, Berlin
- 6 and 10. From a parchment manuscript (St. Petersburg Library Ms 1111). Syria (?), 9th Cent. From Stasof-Gunzburg, op. cit., Pl. V 4 and 8
7. From a parchment manuscript (St. Petersburg Library Ms 11 101). N. Africa, Middle 14th Cent. From Stasof-Gunzburg, op. cit., Pl. XIX 3
8. Miniature from a prayer-book. Parchment manuscript, 1272, in the Raschi Synagogue, Worms
11. Part view of a painted phylactery ribbon, 1782
12. Part view of a painted phylactery ribbon from Segeberg, 1835
13. Part view of a painted phylactery ribbon, 1746
- 14 and 20. Part view of a curtain in front of the Sacred Ark of the Covenant dated 1689 from a Synagogue in Prague.
- 16 and 19. Part view of an embroidered linen towel used on Sabbaths and festivals, 1781

PLATE XLIII

The originals of Nos. 1-5, 7, 9, 10, 12 are in the Hamburg Ethnological Museum, No. 11 is in Herr Max Tielke's Collection (Berlin), Nos. 6, 8, 13-20 in the Berlin Ethnological Museum (South American Section)

- 1 and 4. Faience plates from Coimbra (Portugal) (13. 64 : 175 and 174)
2. Glazed terra cotta jug; lower half unglazed. Porto (Portugal) (13. 64 : 20)
3. Faience jug. Vallado (Portugal) (13. 64 : 172)
- 5 and 9. Woollen aprons embroidered with chenille and gold tinsel. Salamanca (Spain) (13. 65 : 40 and 41)
- 6, 8, 17, 19. Patterns on silk stockings. Cuzco (Peru) (VA 11265 a and b)

7. Woven wallet. Basque Provinces (Spanish Prov. of Guipuzcoa) (13. 60 : 23)
- 10 and 12. Pattern on counterpane made of interwoven linen fabric wads, thin cotton threads, and decorated with woollen threads. Porto (Portugal) (13. 64 : 71)
11. Pattern on back of a Spanish jacket, appliqué work
13. Plate. Brazil (VB 744)
14. Vessel. Peru (VA 8958)
- 15 and 18. Plate and small jug. Brazil (VB 390 and 391)
- 16 and 20. Faience plate. La Paz (Bolivia) (VA 2810 a and b)

PLATE XLIV

All the originals of this plate are in the German Ethnographical Museum, Berlin

- 1 and 3. Embroidered silk caps. Hohnheim (Alsace) (VIVd 529 and VIVd 34)
2. Silk cap embroidered with gold. Frankenstein district (Silesia) (V I e 338)
4. Pattern on silk embroidered cotton stomacher. Brietzig-Lettin (Weizacker) district (V I c 515)
5. Gold clasp with silver filigree. Hanovarian Elb Marches (V II 421)
6. Pattern on embroidered stomacher. Werben (Weizacker) (V I c 504)
- 7 and 9. Two gold embroidered stomachers. Vierlande (V II c 7 and 8)
8. Bead embroidered bridal stomacher. Lindhorst (Bückeberg) (VIII f 140 a)
10. Corner of an embroidered stomacher. Hesse-Nassau (V I h 196)
11. Gold clasp with silver filigree. Altes Land (V 11 338)
12. Embroidery on a capkerchief. Lower Bavaria (V IV a 1138)
13. Corner of an embroidered stomacher. Pyritz (Pomerania) (V I c 515)

PLATE XLV

All the originals of this plate are in the German Ethnographical Museum, Berlin

1. Lid of a bandbox (chip-wood) from Mönchgut, Rügen (V I c 176)
2. Lid of a bandbox from Trömling (Province of Saxony), 1740 (V I g 15)
3. Lid of a bandbox. North German. Of doubtful provenance (D. E. A. VIII 106)
- 4 and 5. Flax swingles. Formerly given as lover's token. Mönchgut, Rügen (V I c 125 and 126)
6. Back of waggon-seat. Altes Land (Province of Hanover), (V I 1 250)

7. Back of a "bridal chair" from Jamund (District of Köslin, Pomerania), 1837 (V I c 638)

8. Front view of a small chest-of-drawers (toy) from Bavaria (V IV a 110)

9. Salt box from Hesse-Nassau, 1898 (V I h 181)

10. Back of a "bridal chair" from Schwalm (Hesse), 1837 (V I h 4)

11. Pattern on a Tyrolese cradle (V VI g 916)

12 and 14. Pattern on a wooden box from Gendert-heim (Alsace) (V IV d 341)

13. Board painted to imitate dial of a Black Forest clock. Black Forest (V IV c 599)

15 and 19. Furniture supports used as protection against floods, from Hindeloopen (Zuider Zee, Netherlands), 18th Cent. (V VII e 162 and 161)

16 and 18. Part view of a painted school box. Origin and age same as No. 15 (V VII e 69)

17. Door-panel from the Spreewald (VI f 783)

PLATE XLVI

All the originals of this Plate are in the German Ethnographical Museum, Berlin. The manufacturers of these ceramics are mostly unknown, hence the notes are limited to places of origin

1. Plate from Jamund (District of Köslin, Pomerania) (V I c 717)

2, 4, 14. Plates from Sleswig-Holstein. Kellingshusen? (V I m 332, 276, 321)

3. Plate from Silesia (V I e 147)

5 and 7. North Frisian Plates from the district of Wittbeck-Winnert-Ostenfeld (V I m 139 and 131)

6. Plates from Biel (Canton of Bern, Switzerland) (V VI k 81)

8 and 11. Plates from the Spreewald. No. 8 bears the mark of an anchor with an M. below: probably made in Frankfort-on-the Oder (V I f 210 and 246)

9. Plate dated 1795, Spreewald (V I f 274)

10. Plate from Pomerania (Weizacker), but was perhaps manufactured in the district of Danzig (V I c 577)

12. Plate dated 1798 from Hirschberg valley (V I e 242)

13 and 17. Dish and jug from Marburg (Hesse) (V I h 202 and 378)

15. Jug from the Salzburg district (Upper Austria) (V II a 536)

16. Jug from Upper Bavaria (V IV a 932)

18. "Waggon jug" from the Spreewald (Lusatian ware) (V I f 190)

19. Jug from the Salzburg district (Upper Austria) (V IV a 534)

PLATE XLVII

All the originals of this Plate are in the German Ethnographical Museum, Berlin

1, 3, 7-10. Embroidered woollen gloves from the District of Heydekrug (V I a 91, 516, 106, 104, 95, 89)

2, 4-6. Embroidered bags worn by women on a belt. District of Heydekrug (V I a 39, 41, 42, 38)

11-12. Embroidered cap borders. District of Heydekrug (V I a 118, 36, 120)

PLATE XLVIII

All the Originals of this Plate are in the Hamburg Ethnological Museum

1. Wooden vessel (butter-tub) from Hardanger (Norway) (15.58:18)

2. Part of wooden harness (saddle mounting; back piece for reins) from South Jämtland (Sweden) (15.34:4)

3. Wooden butter-tub from Hardanger (Norway). On handle the date: 1863 (15.58:20)

4. Wooden box from Trondjem (Norway). On the box date: 1834 (16.53:39)

5. Part view of a mangle-board from Hardanger (Norway) (15.58:24)

6. Woman's embroidered hand-bag from Bjurs-Socken (Dalarne, Sweden) (17.94:17)

7. Embroidered sleeve facing edging from North Jämtland (Sweden) (15.36:393)

8. Part view of a chest from Hardanger (Norway) (15.58:27)

9. Spinning-wheel board from West-Finland (15.51:05)

10 and 11. Part view of child's stocking from North Jämtland (Sweden) (15.14:64)

12 and 13. Part view of a carpet with the date 1886 from West-Finland (1603:05)

14. Bridal glove from North Jämtland (Sweden) (15.36:387)

PLATE XLIX

All the originals of this Plate are in the Hamburg Ethnological Museum

1 and 2. Printed fabric pattern on Siryanian skirt (11.45:128 and 11.45:126)

3 and 4. Siryanian printed fabric pattern (11.45:241 and 11.45:243)

5 and 7. Painted Siryanian bark box (11.45:57)

6. Pattern of Siryanian printed table-cloth (11.45:188)

8 and 10. Pattern on printed Siryanian shirt (11.45:126)

9. Pattern on printed Bessermanian shawl (Wjatka Government) (1999:10). The Bessermanians may be of Finno-Hungarian origin, but are now Tartarized.

PLATE I

All the originals of this Plate are in the Hamburg Ethnological Museum

- 1 and 3. Cross-stitch pattern on Permyak woman's cap (3162:07 and 3163:07)
2. Mordvinian socks (2913:07)
4. Sleeve patterns on linen Moksha-Mordvinian shirt (Government of Pensa) (13.188:11)
5. Mordvinian cap (D 166)
6. Part view of embroidered Tcheremis woman's hood (Government of Kasan) (13.28:34)
7. Part view of an embroidered towel used by the Vyatkas of Glasov District (Government of Vyatka) (13.188:6)
8. Part view of a girl's apron (from the Island of Moon) (Esthonia) (19.39:6)
9. Part view of a Tcheremis woman's head-dress (Government of Kasan) (13.28:45)
10. Part view of Vyatka stomacher (13.188:3)
11. Part view of embroidered edging of Vyatka woman's sleeve (District of Glasov) (13.28:9)
12. Part view of a Vyatka stomacher (District of Sarapul) (13.28:8)

PLATE LI

The originals of Nos. 1-4, 7, 8, 9, 11, 12, 14 and 15 are in the Hamburg Ethnological Museum. The originals of Nos. 5, 7, 10 and 13 are the property of the Russian Trade Delegation in Berlin

- 1 and 3. Painted bark vessel from the Government of Vologda (11.31:23)
2. Painted bark basket from the Government of Vologda (11.31:16)
4. Painted basket from the Government of Archangel (856:10)
5. Embroidered edging. Soviet Russia
- 6 and 8. Painted table-spoon from the Government of Archangel (831 a:10)
7. Brocade embroidery and velvet. Soviet Russia
9. Embroidered cloth. Russia (1576:09)
10. Embroidered border. Soviet Russia
- 11 and 14. Part views of embroidered cover. Russia (1578:09)
- 12 and 15. Part views of embroidered cover. Russia (1574:09)
13. Embroidered border. Soviet Russia

PLATE LII

All the originals of this Plate are modern work from the Ukrain in the possession of the Soviet Russian Trade Delegation in Berlin

1. Pattern on an embroidered pillow case
2. Part view of a woven towel
3. Pattern on an embroidered pillow case

4. Pattern on a towel or table centre
5. Embroidered and printed cloth
6. Centre pattern of a large embroidered strip of material
7. Embroidered and printed cloth
8. Pattern on a towel or table centre
9. Part view of a carpet
10. Embroidered edge of a towel

PLATE LIII

All the originals of this Plate are in the Hamburg Ethnological Museum

1. Money-box from Bukowina (Rumania) (1155:09)
2. Hucule "Plutzer". Kossow, Galicia (Poland) (12.11:25)
3. Plate from Bukowina (12.39:29)
4. Jug from Bukowina (1151:09)
5. Stove tile, Hucule. Kossow, Galicia (12.11:45)
6. Slovak earthenware jug (Czecho-Slovakia) (1112:06)
7. Drinking flask, wood. Hermanstadt, Transylvania (Roumania) (1154:06)
- 8 and 9. Corner tile, Hucule. Kossow, Galicia (12.11:46)
10. Jug, 1846, from Transylvania (14.123:154)
11. Hungarian drinking bottle (D 119)
12. Hucule "Plutzer". Kossow, Galicia (12.11:28)
13. Ring-shaped glazed terra cotta bottle from Budapest (16.14:1)

PLATE LIV

All the originals of this Plate are in the Hamburg Ethnological Museum

1. Pattern on a woman's woven cap. Ciacova near Temesvár (Banat) (1330:06)
- 2 and 5. Front and back view of a soft leather waistcoat; embroidered and trimmed with pieces of leather. Klausenburg (Transylvania) (1245:07)
3. Pattern on shepherd's apron; made of wool and silver thread. Varadia near Vershetz (Banat) (1128:06)
4. Oriental cloth, cotton fabric. Birkis near Facset (Banat) (1352:06)
6. Woven towel, cotton. Miercurea (Transylvania) (1351:06)
- 7, 9, 13. Various embroidery patterns on a jacket sleeve. Nitra (Czecho-Slovakia) (1060:06)
8. Embroidery edging. Trenčín (Czecho-Slovakia) (1064:06)
10. Pattern on upper part of a shirt-sleeve. Pressburg (Czecho-Slovakia) (1059:06)
11. Pattern on an embroidered cap. Czecho-Slovakia (1052:06)

12. Pattern on an embroidered stomacher. Czechoslovakia (1069:06)
 14. Pattern on an embroidered apron. Moravia (Czechoslovakia) (1056:06)

PLATE LV

All the Easter eggs are in the Hamburg Ethnological Museum and come from Bukovina (Rumania)

- | | | |
|----------------|-----------------|-----------------|
| (1. 18. 28:28) | 7. (18. 28:12) | (12. 18. 28:36) |
| (2. 18. 28:34) | 8. (no number) | (13. 18. 28:65) |
| (3. 18. 28:15) | 9. (18. 28:19) | (14. 18. 28:31) |
| (4. 18. 28:29) | 10. (18. 28:51) | (15. 18. 28:33) |
| (5. 18. 28:14) | 11. (18. 28:20) | (16. 18. 28:50) |
| (6. 18. 28:13) | | |

PLATE LVI

All the originals of this Plate are in the Hamburg Ethnological Museum

- 1 and 2. Front and back of a satchel from Vrljka (Dalmatia). Woven in coloured wool on white cotton (1094:09)
 3. Part view of a satchel from Kievo (Dalmatia). Woven in wool and cotton (1130:09)
 4. Sleeve pattern of a woman's shirt from Nerodimnja (Macedonia) (18. 15:302)
 5. Pattern on a coloured woven woollen apron from Scardona (Dalmatia) (1090:09)
 6. Pattern on an apron from Laplie (Macedonia) (18. 15:309)
 7. Hem of a woman's jacket; rough woollen fabric. Surroundings of Zara (Dalmatia) (1084:09)
 8. Ornatmentation on front of a shirt; rough cotton fabric. Crossstitching of fine wool. From the surroundings of Zara (Dalmatia) (1081:09)
 9. Back of woman's camisole from Nerodimnja (Macedonia) (18. 15:303)
 10. Pattern on an embroidered head-cloth from Sredska (Macedonia) (18. 15:325)
 11. Ornament on a woman's skirt from Sredska (Macedonia) (18. 15:319)
 12. Pattern on waistcoat (front), wool fabric. Embroidery, cable stitch. Costume worn by the Greek orthodox. From Otrovazzo (Dalmatia) (1080:09)

PLATE LVII

All the originals of this Plate, with the exception of No. 3, are in the Hamburg Ethnological Museum

- 1 and 5. Earthenware jugs from Georgia (12. 81:41 and 13. 153:60)
 2 and 4. Cloth pieces from the Caucasus (13. 153:34 and 13. 153:35)
 3. Trimming on the lower part of a Cabardinian woman's caftan sleeve. Gold cord and Caucasian braid, velvet. Caucasian Museum, Tiflis
 6. Tobacco-pouch from Mingrelia (A 2020)

7. Breast Ornament from Daghestan. Silver filigree, coloured glass, silver chains (1082:07)
 8. Head-dress from Mingrelia (A 2019)
 9. Leaghiian woollen stocking, purchased in Tiflis (1076:10)
 10 and 13. Front and back part of a woollen stocking from Armenia (1077:10)
 11. Embroidered bag from the Caucasus (13. 153:58)
 12. Woollen boot from Kapuč, Daghestan (1072:07)

PLATE LVIII

All the originals of this Plate are in the Hamburg Ethnological Museum

1. Silk embroidery on a Turkish towel (no number)
 2. Pattern on a silk belt from Persia (22. 9:1)
 3. Silk embroidery on a Turkish towel (11. 71:40)
 4. Cotton cloth with woven selvage. Bashkirsarai (Krim-Tartar) (1195:10)
 5. Kasan-Tartar woven ornamental cloth (Russia) (22. 9:132)
 6. Woven cotton cloth from Bahkirsarai (Krim-Tartar) (1196:10)
 7. Tartar carpet sack (Caucasus) (12. 81:34)
 8 and 9. Pattern on saddle-bag (wool, woven) from Susa. Caucasian-Tartars (1092:10)
 10. Same as 8 and 9 (1091:10)
 11. Pattern on silk-plush from Scutari, Turkey (15. 20:1)
 12. Salt bag (woven) from Susa. Caucasian-Tartars (13. 153:5)

PLATE LIX

All the originals of this Plate are in the Hamburg Ethnological Museum

- 1, 2, 3 and 5. Pattern on silk embroidered wall drapery. Kasantaren (Russia) (22. 9:142)
 4 and 6. Pattern on an embroidered cover. Kasantaren (22. 9:140)
 7. Pattern on front of jacket from Syria (22. 9:224)
 8. Pattern on a Turkish silk embroidered towel (11. 71:42)
 9. Pattern on a Turkish silk embroidered cover (22. 9:214)
 10 and 13. Pattern on a jacket from Syria (22. 9:227)
 11. Pattern (embroidered) on front of a closed jacket from Syria (22. 9:227)
 12. Woven pattern on back of open jacket from Syria (22. 9:230)

PLATE LX

All the originals of this Plate are in the Berlin Ethnological Museum (Indian Section) and come from Menacha (mountainous district in Yemen)

- 1 and 3. Women's caps made of striped satin with appliqué gold threads (I B 1600 and 1590)

2 and 9. Bodice and neck part of woman's shirt (I B 1579c)

4 and 6. Woman's cotton trousers embroidered with silk and gold threads (I B 1580 B and A)

5 and 8. Upper and lower part of bodice of woman's shirt embroidered with gold and woollen threads

7. Bodice of a woman's shirt embroidered with woollen thread and hemmed with gold tinsel (I B 1579a—c)

10. Man's cap, wool, embroidered with silk (I B 1582)

11. Jew's cap, silk embroidered; worn on parting (I B 1599)

12. Priest's cap, silk embroidered, with Arabic characters (I B 1598)

PLATE LXI

All the originals of this Plate are in the Hamburg Ethnological Museum

1. Ornamental edging, glass beads, on woman's chamois leather boot. Yakuts (District of Yakutsk) (12.7:35)

2. Silk embroidery on a horse-cloth. Yakuts (District of Yakutsk) (12.78:176)

3. Yakut cloth belt embroidered with pearls. Kazaičevskij (997:10)

4 and 12. Gilyak bark ornaments (L. P. K. 43 and L. P. K. 40)

5. Part view of a Gold bark box (L. P. J. 24)

6. Leather mosaic-work glove worn by the Kazym-Ostyaks (13.108:73)

7, 9, 11. Part view of a Gold painted tobacco-box (L. P. J. 26)

8. Man's stomacher. Swedish Lapps. Northern Jämtland (15.16:34)

10. Fur horse rug with fabric mosaic pattern. Yakuts (District of Yakutsk) (12.78:177)

13. Leather glove, fur lining, with silk embroidery. Yakuts (District of Yakutsk) (12.78:194)

PLATE LXII

All the originals of this Plate are in the Hamburg Ethnological Museum

1, 2, 3, 5. Whole and part views of a cloak made of carp skin. Gold. Ornaments made of dyed carp skin; applied to surface (L. P. J. 17)

4. Birch-bark hat worn by the Golds (15.11:87)

6. Birch-bark hat worn by the Gilyaks (A 1406)

7 and 9. Crowns of Yakut women's caps (12.78:334 and 12.78:333)

8, 10, 12. Breast pocket and hem pattern of Gold woman's cloak (1558:09)

11. Reindeer skin wallet (skin mosaic pattern), Kazym-Ostyak (13.108:93)

PLATE LXIII

All the originals of this Plate are in the Hamburg Ethnological Museum

1, 3, 10—12. Patterns on a carpet from the Government of Semipalatinsk (561:06)

2 and 8. Patterns on a felt carpet made of camel-hair. The trimmings made of cotton fabric applied to surface, and hemmed with woollen thread. Government of Semipalatinsk (559:06)

4 and 9. Patterns on back and hem of a woman's dress (Kirghiz) (424:06)

6. Pattern on Kirghiz horse-cloth. Chain-stitch silk embroidery. Government of Semipalatinsk (556:06)

PLATE LXIV

All the originals of this Plate are in the Berlin Ethnological Museum (Indian Section)

1. Pattern on a silk embroidered linen veil from Derwáz (Pamir Mountains) (I B 5338)

2 and 7. Vide No. 1 (I B 5332)

3 and 5. Vide No. 1 (I B 5340)

4. Pattern on a silk embroidered veil from Obimob (Kulyab and Derwáz frontier) (I B 5342)

6. Vide No. 1 (I B 5330)

PLATE LXV

All the originals on this Plate are in the Berlin Ethnological Museum (Indian Section)

1. Pattern on back of dress worn by the Achál-Tekke Turkoman women. Silk embroidery on linen (I A 357)

2, 7—9, and 11. Pattern on back (2), Pattern on buckle worn at back (7), sleeve patterns (8—9) and pattern on front (neck; No. 11) of a woman's wrap; Achál-Tekke Turkomans (I B 1315)

3. Pattern on back of a shirt from Merv (I B 1901)

4 and 6. Pattern on back (4) and front part of a Achál-Tekke woman's dress (I A 336)

5. Pattern on a dress; in all probability worn by Achál-Tekke Turkoman women (I B 1131)

10. Front part of a Tekke woman's dress from Goek-Tepe (I A 332)

PLATE LXVI

All the originals of this Plate are in the Berlin Ethnological Museum (Indian Section)

1. Man's boot, velvet with silver embroidery. Bokhara (I B 2314)

2 and 6. Hand stitched men's caps from Bokhara (I B 2466, I B 2469)

3. Carpet pattern; Tekke-Turkoman (I B 2716)

4. Velvet boot with gold and silver embroidery from Bokhara (I B 1895)

5 and 7. Leather boot with leather appliqué work from Kasan (Bokhara) (I B 2319, I B 2308)

8. Part view of a woven saddle cloth from Bokhara (I B 2392)

9. Pattern on back of Bokhara coat. Hand stitched (cross stitch). The lining on Pl. LXVIII 4 (I B 2779)

10. Embroidered patch in trousers. Silk embroidery (cross stitch) on linen (Bokhara) (I B 2357)

PLATE LXVII

All the originals of this Plate are hand embroidered men's caps, they were purchased in Bokhara, and are in the Berlin Ethnological Museum (Indian Section)

- | | | |
|-------------|-------------|-------------|
| 1. I B 2490 | 4. I B 2489 | 7. I B 2464 |
| 2. I B 2494 | 5. I B 2486 | 8. I B 2477 |
| 3. I B 2479 | 6. I B 2458 | |

PLATE LXVIII

All the originals of this Plate are in the Berlin Ethnological Museum (Indian Section)

1. Pattern on woman's woven silk shirt. Bokhara (I B 1788)

2. Pattern on silk lining of a dress. Bokhara (I B 2778)

3. Pattern on a woman's silk shirt. Bokhara (I B 2522)

4. Pattern on jacket lining (silk) (of Pl. LXVI 9) Bokhara (I B 2779)

5. Pattern (slightly restored) on a woman's pair of trousers. Bokhara (I B 1787)

6, 9, 11 and 12. Silk pattern. Bokhara (I B 2378, I B 2375, I B 2373, and I B 2379)

7. Pattern on silk coat lining. Bokhara (I B 2780)

8 and 10. Pattern on half silk fabric. Samarkand (I B 2365 b, I B 2365 c)

PLATE LXIX

All the originals on this Plate came from Bokhara and are in the Berlin Ethnological Museum (Indian Section)

1. Part view of a cover. Silk embroidery on linen (I B 2650)

2. Part view of a cover. Silk embroidery on linen (I B 2676)

3. Part view of a cover. Silk embroidery on linen (I B 2667)

4. Part view of a cover. Silk embroidery on linen (I B 2672)

5, 7, 9. Part views of a cover. Silk embroidery on linen (I B 2647). Cf. Pl. LXXXI 7

6. Part view of a cover. Silk embroidery on linen (I B 2649). Cf. Pl. LXXXI 6

8. Part view of a cover. Silk embroidery on linen (I B 3616). Cf. Pl. LXX 19

PLATE LXX

All the originals of this Plate came from Bokhara and are in the Berlin Ethnological Museum (Indian Section)

1. Part view of a cover. Silk embroidery on linen (I B 2653)

2 and 8. Part views of a cover. Silk embroidery on silk (I B 2652)

3. Part view of a cover. Silk embroidery on linen (I B 2689). Cf. Pl. LXXXII 2

4. Part view of a cover. Silk embroidery on silk (I B 2659)

5 and 9. Part views of cover. Silk embroidery on silk (I B 2654)

6. Part view of a cover. Silk embroidery on linen (I B 2671)

7. Part view of a cover. Silk embroidery on silk (I B 2657)

PLATE LXXI

All the originals of this Plate came from Bokhara and are in the Berlin Ethnological Museum (Indian Section)

1. Part view of a cover. Silk embroidery on linen (I B 2669)

2. Part view of a cover. Silk embroidery on linen (I B 2658)

3. Part view of a cover. Silk embroidery on linen (I B 2687)

4. Part view of a cover. Silk embroidery on linen (I B 2673)

5. Part view of a cover. Silk embroidery on linen (I B 2666)

6. Part view of a cover. Silk embroidery on linen (I B 2649). Cf. Pl. LXIX 6

7. Part view of a cover. Silk embroidery on linen (I B 2647). Cf. Pl. LXIX 5, 7, 9

8. Part view of a cover. Silk embroidery on linen (I B 2645)

9. Part view of a cover. Silk embroidery on linen (I B 3616). Cf. Pl. LXIX 8

10. Part view of a cover. Silk embroidery on linen (I B 2644)

11. Part view of a cover. Silk embroidery on linen (I B 2688)

12. Part view of a cover. Silk embroidery on linen (I B 2679)

13. Part view of a cover. Silk embroidery on linen (I B 2642)

PLATE LXXXII

All the originals of this Plate are in the Berlin Ethnological Museum (Indian Section)

1. Part view of a cover. Silk embroidery on linen. Bokhara (I B 2664)

2. Part view of a cover. Silk embroidery on linen. Bokhara (I B 2689). Cf. Pl. LXX 3
3. Part view of a cover. Silk embroidery on linen. Bokhara (I B 2662)
4. Part view of a small cover. Silk embroidery on silk. Qumtura (East Turkistan) (I B 4321)
5. Part view of a woman's shirt. Silk embroidery on silk. Kutcha (East Turkistan) (I B 4286)
6. Part view of a cover. Silk embroidery on linen. Bokhara (I B 2683)
7. Part view of a cover. Silk embroidery on linen. Bokhara (I B 2691)
8. Part view of a cover. Silk embroidery on linen. Bokhara (I B 2677)
9. Part view of a cover. Silk embroidery on linen. Bokhara (I B 2643)

PLATE LXXIII

All the originals on this Plate are in the Berlin Ethnological Museum (Indian Section)

1. Pattern on an embroidered pair of woman's trousers from Yarkand (I B 4034)
- 2 and 5. Dungan belt wallet from Turfan (I B 3085, I B 3080)
- 3, 4, 11. Patterns embroidered on women's trousers from Toqsu near Kutcha (I B 4267, I B 4269, I B 4310)
- 6, 7, 8, 10. Pattern embroidered on women's trousers from Kutcha (I B 4292, I C 5698, I C 5693, I C 5694)
9. Embroidered towel from Kutcha (I C 4329)

PLATE LXXIV

All the originals of this Plate are in the Berlin Ethnological Museum (Indian Section)

- 1 and 4. Dungan embroidered belt wallet from Turfan (I B 3076, I B 3077)
2. Pattern on embroidered woman's shirt. Kutcha (I B 5695)
- 3 and 5. Pattern on woman's trousers (embroidered) from Toqsu near Kutcha (I B 4266)
- 6 and 7. Pattern on woman's embroidered trousers from Turfan (I B 3099, I B 3098)
- 8 and 10. Men's and women's caps from Turfan (I B 3110, I B 3111)

PLATE LXXV

All the originals of this Plate are in the Berlin Ethnological Museum (Indian Section)

1. Pattern on a Buddhist silk picture. Said to come from Baezaeklik (I B 6287)
2. Fresco fragment (without number)
3. Pattern on a mural painting, back wall of the corridor, Temple 9, Baezaeklik (I B 6885)

- 4 and 7. Front and back part of an earthenware torso representing armour of the T'ang Period. Found in deep shaft in the middle of the great Kum-ariq stupa near Kutcha. 8th—10th Cent. (I C 8211)
5. Fresco fragment, dragon in sea. Cave 19, Caezaeklik. 9th—10th Cent. (I C 8383)
6. Small painted wooden board. Qumtura (I B 7280)
8. "Sassanian frieze", fresco on which a Sassanic fabric is copied. Qyzil, main building. Before 700 B. C. (without number)
9. Fresco pattern. Kirish, 1st cave, left side—entrance in the gorge (without number)

PLATE LXXVI

All the originals of this Plate are in the Berlin Ethnological Museum (Indian Section)

1. Fresco Fragment. Qyzil right side of the Sailors' Cave (no number)
- 2 and 8. Stucco reliev. Qumtura, Cave 13 (no number)
3. Pattern on a panel. Idiqu-Shaehri (I B 4622 a)
4. Remnant of a silk picture. Chotsho (I B 6307)
5. Pattern on a painted wooden beam. Saengim gorge (I B 7294)
6. Pattern on a painted door jamb. Idiqu Shaehri
7. Fabric fragment with appliqué parchment ornaments. Tumchuq (I B 8066)
9. Fragment of woven silk fabric. Two stags in medallion. Perhaps Iranic fabric. Chotsho, Ruin "K". Anterior to 10th Cent. (I B 6203)
10. Fresco. Qyzil, Tempel 3 (No. 47)
11. Ornament of a ceiling fresco Idiqu-Shaehri, Temple "a" (I B 4517)

12. Fresco in door arch of the corridor in Annex C. Qyzil, Devil's Cave. Before 700 A. D. (I B 8375b)
13. Pattern from background of the head of Mahakasyapa. Qyzil, cave over the great cave. Anterior to 700 A. D. (I B 8373 a)

PLATE LXXVII

All the originals of this Plate are in the Berlin Ethnological Museum (Indian Section)

1. Scroll work on a fresco. Chotsho, Ruin "β" (I B 6734)
2. Wooden lid of box for crematory remains. Qyzil, great grave near entrance of the right bank of the brook gorge. Anterior to 700 A. D. (I B 7649 a)
3. Embroidery on corded silk. Chotsho (I B 6254)
- 4 and 6. Pattern on painted wooden door-jamb. Idiqu-Shaehri (I B 4435 e and 440c)
5. Fresco. Qyzil, side wall of the Red Dome Cave (no number)
7. Fresco. Qyzil, Foot Washer's Cave (No. 17)

8. Fresco. Sitting Buddha. Baezaeklik, Cave 19. 9th—12th Cent. (I B 8382)
9. Fresco. Pattern on coffin of a Buddha cremation. Qyzil, Maya Cave, 2nd building (No.14)

PLATE LXXXVIII

All the originals of this Plate are in the Berlin Ethnological Museum (Indian Section)

- 1 and 3. Glazed plates from Kutcha (I B 4390, I B 4389)
2. Glazed pot from Kurla (I B 4271)
4 and 6. Glazed dishes from Multān (I C 5923, I C 5922)
5. Glazed pot from Faizābād (I B 3127)
7 and 9. Glazed dishes from Peshawar (I C 5976, I C 5974)
8. Glazed vessel from Multān (I C 5901)
10 and 12. Glazed plates from Kutcha (I B 4387 b and a)
11. Glazed drinking bowl from Faizābād (I B 4247)

PLATE LXXXIX

All the originals of this Plate are in the Berlin Ethnological Museum (Indian Section)

- 1, 2, 4—6, 8. Silk embroidered braid (mostly broad stitch), from Bombay (I C 26386)
3, 7, 11. Part views of an embroidered (chain stitch) silk jacket worn by Parsi women; from Bombay. No. 3 pattern on front, No. 7 below neck opening. No. 11 hem (I C 15774)
9, 10, 13, 14. Gold and silver embroidered braid for trousers; Bombay (I C 5345a—f)
12. Front part of a girl's jacket; Bombay (I C 26385)

PLATE LXXX

All the originals of this Plate are in the Berlin Ethnological Museum (Indian Section)

1. Pattern on a Khāmti bag (I C 29087)
2. Hem braid of a Fakial woman's wrap (I C 29133)
3. Asam prince's gold embroidered crown (I C 35775)
4. Pattern on woman's woven upper dress worn by the Luchai (mountain tribe of the Chittagong district) (I C 13176)
5. Pattern on the lower hem of a jacket worn by the Khāsīs. Chain stitch embroidery on wool (I C 16199)
6 and 10. Khāsī poncho. No. 6 breast flap. No. 10 front slit and lower hem (I C 28777)
7. Woven pattern on a silk dress. Woven in Asam for the Khāsīs (I C 28791)
8. Lower hem pattern of a Khāsī poncho (I C 28775)
9 and 11. Patterns on sleeves worn by Lepcha warriors. Woolen fabric; cross pattern dyed (I C 33879, I C 33841)

PLATE LXXXI

All the originals on this Plate are painted earthenware pots from Kandy (Ceylon) and are in the Berlin Ethnological Museum (Indian Section)

- | | | |
|--------------|--------------|---------------|
| 1. I C 14984 | 5. I C 8170 | 9. I C 14973 |
| 2. I C 14985 | 6. I C 14992 | 10. I C 14995 |
| 3. I C 14986 | 7. I C 14978 | 11. I C 16968 |
| 4. I C 14998 | 8. I C 14974 | 12. I C 14996 |

PLATE LXXXII

All the originals of this Plate are modern masks from Ceylon, as used in the Colam Dance. They are in the Berlin Ethnological Museum (Indian Section)

- 1, 3, 5, 6. The "Second King's" mask (I C 14878, I C 14884, I C 10030, I C 14881)
2. Part view of the "First King's" mask (I C 14875)
4. The Jewel Heap Devil's mask (Ratnakūtarākshaya) (I C 10036)
7. Back view of the "First Queen's" mask (I C 16960)
8. "Nāgarādśha's" mask (I C 14921)
9. Back view of the "Queen's" mask (I C 10029)

PLATE LXXXIII

All the batik work on this Plate is in the Berlin Ethnological Museum (Indian Section)

1. Part view of a sarung. East Java (I C 34200)
2. Part view of a "Kain pandjang" (open jacket). Garut, West Java (I C 34208)
3. Part view of a silk Pelang cloth. Central Java (I C 34256)
4, 5, 8. Part views of a sarung with representations of Wayang. Chinese work. Diokiokarto (Central Java) (I C 34168)
6. Part view of a standang. Diokiokarto, Central Java (I C 34214)
7. Part view of kain pandjang batiked with tjab. Garut, West Java (I C 34206)
9. Part view of a kain pandjang. Gombang, Central Java (I C 34169)
10. Part view of a standang. Java (I C 34138)
11. Part view of a sarung. Lassem, Central Java (I C 34198)
12. Part view of a sarung. Preanger, Java (I C 37443)

PLATE LXXXIV

All the batik work on this Plate is in the Berlin Ethnological Museum (Indian Section)

1. Part view of a kain pandjang. Central Java (I C 34221)
2. Sarung braiding, Lassem, Central Java (I C 34220)
3. Part view of a kain pandjang with representations of Wayang. Said to be Malang, East Java (I C 34188)
4 and 5. Part views of a sarung. Chinese work. Diokiokarto, Central Java (I C 34204)

6. Part view of a sarung. Chinese work? Lassem, Central Java (I C 34180)
7. Part view of a man's head wrap. Malang, East Java (I C 34216)
8. Part view of a kain pandjang. Garut, West Java (I C 34207)
9. Part view of a sarung. Batavia, Java (I C 34190)

PLATE LXXXV

All the originals of this Plate come from Bali and are in the Berlin Ethnological Museum (Indian Section)

- 1 and 3. Decoration on a Krishna altar socle (I C 31815)
2. Decoration on a wooden figure (I C 31822)
4. Socle for a female figure (I C 29356 a)
- 5 and 8. Edge and side decorations on a musical instrument (I C 9559)
6. Painted wooden lid (I C 29775)
- 7 and 13. Socle and pillar of a Vishnu figure carried by Garuda (I C 31814 b and c)
9. Carving (I C 29728)
10. Model of a cremation chest for a Kshatriya (I C 31824)
11. Model of a cremation chest for a Vaishya (I C 31825)
12. Carving (I C 312)

PLATE LXXXVI

The originals of Nos. 1-7, 9, 11, 15-18 are in the Hamburg Ethnological Museum, Nos. 8, 10, 12-14 in the Berlin Ethnological Museum (Indian Section)

- 1 and 18. Pattern on woven material. Island of Rotti (21.135:99)
- 2 and 4. Pattern on man's woven belt. Island of Sumba (A 4044)
- 3 and 6. Pattern on man's loin cloth. On No. 6 crab pattern. Sumba (12.110:3)
- 5 and 11. Pattern on woven material. Sumba
- 7 and 9. Patterns on a shirt garment. Sumba (A 4041)
- 8 and 14. Pattern on old Ikat fabric. Sumba (I C 39472)
- 10, 12, 13. Pattern on Ikat fabric. Sumba (I C 33609)
- 15 and 17. Pattern on Batak woven material. Sumatra (A 3735 and 1705:06)
16. Pattern on a skirt. Sumba (12.110:5)

PLATE LXXXVII

All the originals of this Plate are in the Berlin Ethnological Museum (Indian Section)

- 1, 3 and 4. Djak shields. Borneo (I C 31405, 31645, 12271)
2. Inner side of a shield. East Borneo (I C 7248)

- 5 and 7. Patterns on two woven jackets. Probably from N.W. Borneo (I C 817 and 819)
6. Basket used in rice planting. N.W. Borneo (I C 811)
- 8 and 10. Plaited caps. N.W. Borneo (I C 23078 and 375)
9. Painted wooden frame used for sacrificial purposes. Borneo (I C 23057)

PLATE LXXXVIII

All the originals of this Plate are in the Berlin Ethnological Museum (Indian Section)

1. Man's hat from Halmahera (I C 8884)
2. Gala hat worn by Alfur chieftain from Tobungku (Celebes) (I C 22985)
3. Hat from Sumatra (I C 9674)
4. Lid of a basket worn slung over shoulders (Cf. Pl. LXXXIX 9) from Flores (I C 18059)
- 5, 7 and 9. Salvers from Macassar and Boni, Celebes (I C 37624, I C 27663 c, I C 27663 b)
6. Basket lid from N. E. Timor (I C 21328)
8. Narrow side of a clothes chest from Halmahera (I C 12113)
10. Pattern on an Alfur hat from Tobungku (Celebes) (I C 22988)
11. Basket lid from Flores (I C 18571)
12. Pattern on a bag-like wallet from Malacca (I C 27790 b)

PLATE LXXXIX

All the originals of this plate are in the Berlin Ethnological Museum (Indian Section)

- 1, 3 and 4. Part view of mats from Halmahera (I C 8876, I C 12069, I C 12049)
2. Gala hat from Ternatè (I C 9284)
5. Box made of sago palm-leaf stalks from Gorong (I C 9296)
6. Pattern on a fire fan from Halmahera (I C 24165)
7. Basket from Flores, worn slung from shoulder (I C 18063)
8. Wallet from East Timor (I C 21333)
9. Flores basket worn slung from shoulder (Cf. Pl. LXXXVIII 4) (I C 18059)

PLATE XC

All the mats used to sit on are from the Aru Islands and are in the Berlin Ethnological Museum (Indian Section)

- | | | |
|--------------|---------------|---------------|
| 1. I C 40907 | 9. I C 40798 | 17. I C 40782 |
| 2. I C 40781 | 10. I C 40816 | 18. I C 40715 |
| 3. I C 40764 | 11. I C 40713 | 19. I C 40912 |
| 4. I C 40821 | 12. I C 40947 | 20. I C 40771 |
| 5. I C 40795 | 13. I C 40698 | 21. I C 40719 |
| 6. I C 40754 | 14. I C 40785 | 22. I C 40801 |
| 7. I C 40700 | 15. I C 40803 | 23. I C 40718 |
| 8. I C 40752 | 16. I C 40686 | 24. I C 40736 |

PLATE XCI

All the originals of this Plate are in the Berlin Ethnological Museum (Indian Section)

1. Model of a Batak house, Sumatra (I C 13708)
2. Model of a rice house, Celebes (Toradja Land) (I C 38476)
3. Bird-cage from Bonerate (I C 17615)
- 4 and 7. Toba carvings from Sumatra (I C 37465, I C 37464)
5. Model of a Batak house. Pangulu dwelling. Sumatra (I C 25741)
6. Carving on a boat. Sulu Islands (I C 26776)

PLATE XCII

All the originals of this Plate are in the Berlin Ethnological Museum (Indian Section)

1. Pattern on side of a boat model from Formosa (I C 31905)
2. Roof ornaments on Kings' houses. Paloppo (Celebes) (I C 38909)
3. Drapery (weaving gear) from Bonerat (I C 17574)
4. Pattern on small betel-nut box from Bali (I C 29774)
5. Insignia of nobility on house-top. Paloppo (Celebes) (I C 38889)
6. Mast-head from the Sulu Islands (I C 26768)
- 7 and 10. Hats worn when invoking rice spirits, from Celebes (I C 38496 b and a)
8. Leather shield from Celebes (Toradja Land) (I C 38443)
9. Painted bridgeboard (pattern somewhat restored), Celebes (Toradja Land) (I C 38503)
11. Decoration on an old musical instrument from Boni (Celebes) (I C 37625)
12. Rice harvest knife from Borneo (I C 803)
13. Boat decoration from Gorong (I C 22169)
14. Boat decoration from the Kisser Islands (I C 19185b)

PLATE XCIII

All the originals of this Plate are in the Berlin Ethnological Museum (East Asiatic Section) and come from the Island of Hainan (China)

1. Pattern on woman's belt. From Musha-sui (I D 32353)
- 2 and 14. Patterns on belts. From Dua-bo-sui (I D 32348 and 32352)
- 3, 5, 7. Patterns on women's jackets (I D 32405)
4. Pattern on apron. From Fa-nam-moi (I D 32367)
6. Pattern on apron. From Tai-mau (I D 32371)
8. Pattern on apron. From Mo-seng (I D 32365)

- 9-11. Pattern on woman's jacket, from Tai-mau (I D 32403, 32400, 32402)
- 12 and 13. Pattern on woman's apron and jacket, from Dua-bo-sui (I D 32370, 32405)

PLATE XCIV

All the originals on this Plate are in the Berlin Ethnological Museum (Indian Section) and come from Siam. Date and origin not determined, but no China factories have existed in Siam for the last fifty years

1. Lid of a box. Enamelled copper (I C 35361b)
2. China vessel (I C 39387)
3. China plate with foot (I C 29406)
4. China bowl (I C 39364)
5. China vessel (I C 39388)
6. China bowl (I C 37835)
7. China plate with foot (I C 37772)
8. China vessel (I C 37847)
9. China plate with foot (I C 39452)
10. China bowl (I C 39373)
11. China box (I C 37872)
12. China bowl (I C 37850)

PLATE XCV

All the originals of this Plate are in the Berlin Ethnological Museum (East Asiatic Section) and come from China. They belong (particularly Nos. 7 and 12) to Lamaesque culture. Date and exact origin not determined

- 1, 6, 10. Embroidery on an "ornamental pendant" (I D 7634)
- 2, 11. Embroidery on an "ornamental pendant" (I D 10261)
- 3-5, 8, 9. Embroidery on an "ornamental pendant" (I D 7636)
7. Pendants on a hand drum (I D 10424)
12. Part view (phoenix) of a priest's collar (I D 16366a)

PLATE XCVI

All the originals of this Plate are in the Berlin Ethnological Museum (East Asiatic Section) and come from China. They belong (particularly No. 2) to Lamaesque culture. Age and exact origin not determined

- 1 and 3. Pattern on dress worn in mask dances (I D 24025)
2. Part of a sacrificial bowl (I D 10386b)
4. Knife and fork holder (I D 24171)
- 5-7. Pattern on piece of silk brocade temple column flag (5 metres long) Cf. Pl. XCVII 2 (I D 24185)

PLATE XCVII

All the originals of this Plate are in the Berlin Ethnological Museum (East Asiatic Section) and come from China. They belong (particularly Nos. 1 and 4) to Lamaesque culture. Age and exact place of origin undetermined

1. Lamaesque altar-cloth (I D 24138)

2. Pattern on silk brocade flag. Rock in sea with waves breaking on it; clouds overhead. Cf. Pl. XCVI 5-7 (I D 24185)
3. Pattern on hand-made carpet (I D 16381)
4. The mystic prayer formula "om mani padme hum" in shape of a monogram. Roll picture (I D 24143)
5. Saddle-cloth (I D 24179)
6. Saddle-cloth (I D 16379)

PLATE XCVIII

The originals of Nos. 1, 2, 6, 7, 9 are in the Hamburg Ethnological Museum, Nos. 3-5 and 8 in the Berlin Ethnological Museum (East Asiatic Section). Dates and origin of the originals are not yet all determined

- 1, 2 and 6. Pattern on a Chinese hand-made carpet (4444:07)
3. Carpet pattern on a Chinese roll picture (I D 23683)
4. Chinese hand-made carpet (I D 24379)
5. Carpet pattern on a Chinese roll picture (I D 23685)
- 7 and 9. Patterns on Chinese hand-made carpet (4486:07)
8. Carpet pattern on a Chinese roll picture (I D 23684)

PLATE XCIX

The originals of Nos. 1-5, 9, 11-13, 15-20 are in the Dresden China Collection, Nos. 6 and 8 are private property in Frankfurt-on-the-Main, No. 7 is in the Berlin Ethnological Museum (East Asiatic Section), Nos. 10 and 14 in the Arts and Crafts Museum, Berlin Castle

- 1, 5, 11, 12, 15, 16, 18. China from King-tê tchên. K'ang-Hi (1662-1722). After photographs taken by E. Zimmermann in "Chinesische Porzellan" (2nd ed., Leipzig, 1923), Pl. 115 right, bottom 79, 116, 106 right, 80, 115 right, top, 118 bottom
2. Vase made of stoneware-like material. From Ts'et'chou-yao? Ming (1368-1643). After Zimmermann, op. cit., Pl. 16 top, middle
3. Small china pot. From Ts'et'chou-yao? Sung? (960-1279). After Zimmermann, op. cit., Pl. 22, top 4 and 9. China from King-tê tchên. Mark of the Emperor Kia-Tsing (1522-1566). After Zimmermann, op. cit., Pl. 56, top, and 55, right
- 6 and 8. China urns. From Ts'et'chou-yao. Sung (960-1279). Photographs after Robert Schmidt, "Chinesische Keramik" (Frankfurt-on-the-Main, 1923), Pl. 20, Fig. 131 and 130
7. Bronze vase (cloisonné technique). Japan (I D 26736)
- 10, 13, 14. China from King-tê tchên. Kien Lung (1736-1795). After Zimmermann, op. cit., Pl. 145 left, right, 144 top

17. China bowl from King-tê tchên. Mark of the Emperor Tchêng-tê, 1506-1521. After Zimmermann, op. cit., Pl. 48, top
- 19 and 20. Small china bowls from King-tê tchên. Mark of the Emperor Yung-Tcheng (1723-1735). After Zimmermann, op. cit. 131, top and 132, top

PLATE C

All the originals of this Plate are in the Berlin Ethnological Museum (East Asiatic Section) and come from China. Date and place of origin undetermined

- 1 and 3. Part views of embroidery on silk ribbon (I D 31804¹¹)
2. Embroidered viceroys' collar; not yet cut out. (Wâng-yê) (I D 10260)
4. Part view of embroidery on silk ribbon (I D 31799²)
5. Embroidered silk cover (I D 2135)
6. Same as No. 4 (I D 31804)
7. Embroidered pectoral worn by military officials (Bear Class) (I D 12928)
8. Embroidered pectoral for civil servants (I D 5577)

PLATE CI

All the originals of this Plate are in the Berlin Ethnological Museum (East Asiatic Section) and come from China. Date and details of place of origin undetermined

- 1 and 3. Embroidered dragon patterns on a dress (I D 1803)
- 2, 6, 12. Embroidered patterns on a dress (I D 1804)
4. Embroidery on silk ribbon (I D 31804⁹)
5. Same as No. 4 (I D 31802⁵)
7. Same as No. 4 (I D 31804¹²)
8. Same as No. 4 (I D 31802⁷)
9. Same as No. 4 (I D 31799¹)
10. Same as No. 4 (I D 31799³)
11. Embroidered pattern on a theatre cloak (I D 13108)
13. Same as No. 4 (I D 31799⁷)
14. Same as No. 4 (I D 31799⁹)

PLATE CII

All the originals of this Plate are in the Berlin Ethnological Museum (East Asiatic Section) and come from Japan. Date and place of origin not designated

1. Part of embroidery on blue fabric (I D 27421)
2. Embroidery, turtle on waves; on a theatre costume (I D 27417)
3. Imperial arms on an imperial presentation cover given at the Cherry Blossom Festival (I D 27789)
4. Paolomonia twig on sash of an imperial princess. Cf. Pl. CII, 9 (I D 27790)

5. Heraldic pattern on the winter hood of a lady of fashion (I D 5967)
- 6 and 8. Embroidery on a theatre costume (I D 27416)
7. Embroidery on a presentation piece of cloth (I D 27422)

PLATE CIII

All the originals of this Plate are in the Berlin Ethnological Museum (East Asiatic Section) and come from Japan. Dates and places of origin undetermined

1. Pattern of priest's silk cloak (I D 26809)
2. Brocade fabric with imperial chrysanthemum pattern (I D 27418)
- 3, 8, 10. Brocade fabric patterns on priest's cloak (I D 27411)
4. Silk lining of a fireman's cloak (I D 26807)
- 5 and 7. Patterns on a piece of silk interwoven with gold thread. Buddhist abbot's wrap (I D 27788)
6. Pattern on a priest's brocade cloak (I D 27414)
9. Phoenix pattern on the sash of an imperial princess. Cf. Pl. CII, 4 (I D 27790)

PLATE CIV

All the originals of this Plate are in a private collection offered for sale to the Hamburg Ethnological Museum. All the items are part views of Aino garments. The Ainos are a tribe living in the south of Saghalin and in Yesso (Japan). Unknown provenance. The ornaments are cut out of fabric and superimposed on the groundwork material. In the case of the older garments this consists of elm bast, in that of the more modern ones of cotton

- 1, 2, 6, 7. Lower hem of garments
- 3 and 5. Decoration on nape piece
4. Hem of breast piece
- 8 and 10. Decorations on middle of back
9. Sleeve patterns?

PLATE CV

The originals of 1-12 and 16 are in the Hamburg Ethnological Museum, Nos. 13-15 in the Berlin Ethnological Museum (Oceanic Section)

1. Shield. MacDonald Range. Ilpara tribe (14. 50: 119)
- 2, 3, 5, 12 and 16. Incised drawings on bottle-tree fruit. N.W. Australia. 2 and 5 are the front and back parts of fruit (932:06). 3. (929:06). 12. (930:06). 16 from Kimberley (3495:07)
4. Painted wooden belt. Port Darwin (3484:07)
6. Shield. Australia (E 2484)
- 7 and 11. Pattern on wooden dance head gear. 7 from Jim Cumming's Camp near Owen Spring Hill (Aranda). 11 from Yloarta near Owen Spring Hill (Aranda) (14. 50:49 and 14. 50:40)

8 and 10. Shells used to cover privy parts or used as necklace. Roebuck Bay (N.W. Australia) (3274:07 and 3362:07)

9. Wooden dancing gear. North of MacDonald Range (Ilpara) (14. 50:50)

13 and 14. Examples of native drawings on paper. Victoria (VI 25159)

15. Shield. Queensland, Australia (VI 2304)

PLATE CVI

All the originals, with the exception of No. 6, are in the Berlin Ethnological Museum (Oceanic Section); No. 6 is in the Bremen Ethnological Museum

- 1 and 4. Calabash vessel from the Admiralty Islands (VI 6421 and 33193a)
2. Wooden food bowl with mother of pearl inlay, from the Solomon Islands (VI 32737)
- 3 and 6. Earthenware vessels from the Empress Augusta River (Mosso and Timbunke, German New Guinea). 3 (VI 38651). 6 after photograph by E. v. Sydow "Kunst der Naturvölker" (Berlin, 1923, Pl. 177). (Bremen S. 89)
5. Calabash vessel ornamented with poker-work. Kaniet (VI 117344)
7. Food bowl with handle. Santa Cruz (VI 25858)
8. Calabash vessel. Luf (VI 17390)
- 9 and 11. Cocoa-nut vessel. Taui. Admiralty Islands (VI 24508a and 17961)
10. Cocoa-nut vessel. New Hanover (not yet inventoried)

PLATE CVII

All the originals are in the Berlin Ethnological Museum (Oceanic Section)

1. Pattern on outside of a large war canoe. Agomes (VI 23116)
2. Wooden slab. Admiralty Islands (VI 30248)
- 3, 6, 7. Ornaments on oar-blade. Solomon Islands (VI 1876)
- 4 and 23. Canoe ornamentation. Rubiana (VI 13611, 13615)
5. Fish pattern on a wooden slab with masks. New Ireland. Cf. Pl. CVIII 3 (VI 2814)
8. Pectoral shield, wood. Admiralty Islands (VI 16941)
9. Dance board. New Ireland (VI 2821)
10. Dance gear. Mioko (VI 12382)
- 11 and 12. Dance boards. Buin (VI 28019, 28018)
13. Painting on bark fabric. New Guinea, Empress Augusta River (not yet inventoried)
14. Canoe or house decorations. Alu (VI 14034)
15. Pattern on a dance club. Santa Cruz (VI 13225)

- 16 and 25. Shields. New Britain (VI 17989, 16363)
17. Club oar. Solomon Islands (VI 4169)
18. Canoe ornamentation. New Mecklenburg (VI 39911)
19. Top part of a wooden gala axe. New Britain (VI 4121)
20. Canoe ornament. Lamassa (VI 23727a)
21. Canoe ornamentation. Fauro (VI 12092)
22. Canoe ornamentation. New Britain (VI 15314)
24. Pattern on a dug-out ornament. Waira (VI 23674b)

PLATE CVIII

All the originals of this Plate are in the Berlin Ethnological Museum (Oceanic Section)

1. Carving. New Ireland (VI 28028)
2. Mask made of Tapa fabric. Baining (VI 38032)
3. Board with mask. New Ireland. Cf. Pl. CVII 5 (VI 2814)
4. Darving. New Ireland (VI 1113)
5. Wooden mask. New Ireland (VI 23464)
6. Dance cap, bast. New Hanover (VI 15129)
7. Head of a wooden figure from grave of a celebrated chief. Removed from grave in 1845. New Zealand (VI 11742)
8. Dance board. New Ireland (VI 2818)
9. Mask. New Ireland (VI 1265)
10. Dance hat. New Hebrides (VI 2179)
11. Board with mask. New Ireland (VI 2823)

PLATE CIX

The Maori house from New Zealand, of which there are part views on this Plate, is in the Hamburg Ethnological Museum (2914:09)

- 1-10, 12-18, 20-27. Ornaments on the rafters
11. View of inside of door leading to front-hall
19. Ornament on the outside of the window looking on the front-hall

PLATE CX

All the bark fabrics on this Plate are in the Hamburg Ethnological Museum

1. Pattern on a cloth from Samoa (E 499)
2. Pattern on a woman's loin-cloth. Fiji Islands (E 308)
3. Pattern on a Tapa cloth from Samoa (E 498)
4. Pattern on a cloth from Samoa (887:06)
5. Pattern on a cloth from Samoa (530:08)
6. Pattern on a Tapa cloth from Samoa (E 3673)
7. Same as No. 6 (E 1176)
8. Pattern on bark fabric. Peleo (Pleasant Island) (6111')

9. Pattern on bark fabric. Cape Beeckey, New Pomerania (4494')
10. Pattern on cloth. Fiji Islands (E 286)
11. Pattern on a Tapa cloth. Samoa (E 1285)
12. Pattern on a Tapa cloth. Fiji Islands (E 287)
13. Pattern on a Tapa cloak Tahiti (17. 89:7)

PLATE CXI

The originals of Nos. 1-21 are in the Berlin Ethnological Museum (North American Section). Nos. 22-24 are in the Linden Museum, Stuttgart

- 1 and 4. Ahtena (Copper River) basket and lid (IV A 6463)
2. Two-headed snake (Sisiutl), wood. Worn over stomach in dances. Kwakiutl (IV A 6891)
3. Basket. Tlingit (IV A 1042)
- 5 and 7. Women's hats. Nootka (IV A 1811 and 1814)
6. Wooden mask representing the sun (or moon) enclosed in a box. Bilchula (IV A 6775)
8. Dance rattle representing the Old Wolf robbing a man. Further the Thunder God who favoured a chieftain. Nootka (IV A 1203)
9. Raven kettle. Man with bird and frog on his back. Nootka (IV A 1369)
10. Model of a boat. Tlingit (IV A 407)
11. Model of a totem pole. Ancestor and totem animal one above the other. Bilchula (IV A 6760)
- 12 and 15. Painted oar. Tlingit or Haida (IV B 45 and 41)
- 13 and 14. Narrow and long side of a chest decorated with picture of falcon. Haida (IV A 516)
16. Model of a totem pole. Below: beaver, then bear, and marine monster. Top: a slave of the chief. Haida (IV A 1426)
17. Head ornament (dance hat) in shape of beaver with badge of rank. Worn at potlach feast. Tsimshian (IV A 2327)
18. Dance mask. Tlingit or Haida (IV A 637)
19. Hat with badge of rank and ermine tails. Haida (IV A 800)
20. Dance mask. Tlingit (IV A 352)
21. Front part of a chief's head ornament inlaid with halioti mussel-shells depicting a sea-gull. Heiltsuk (IV A 480a)
22. Cedar bast mat with painted marine monster. Tlingit (no number)
23. Dance wrap made of mountain goat's hair with interwoven patterns. Tlingit (Chilkat) (no number)
24. Pattern on a bast mat (Tlingit) (no number)

PLATE CXII

The originals of Nos. 1, 4-6, 11-13 are in the Linden Museum, Stuttgart; Nos. 2, 3, 7-10, 14-26 are in the Berlin Ethnological Museum (North American Section)

- 1 and 5. Patterns on a woollen cloth. Navajo. Modern (44658 and 44658a)
2. Pattern on a priest's dance apron embroidered with wool. Pueblo. Modern
- 3, 7, 17. Baskets, partly decorated with small feathers. Pomo. Modern (IV B 7296, 7269, 11943)
4. Pattern on a bracelet. Wool wound over leather strips. Hopi. Modern (I C 50454)
6. Wedding blanket. Wool embroidery. Hopi. Modern (I C 50435)
- 8, 10. Painted dance boards. Worn at feasts by women in October. Hopi. Modern (IV B 4999 and 5000)
9. Painted wooden doll representing Hemis-Katchina. Hopi. Modern (IV B 2292)
11. Woven woollen belt. Hopi. Modern (I C 40200)
12. Dance apron with woollen embroidery. Hopi. Modern (I C 55407)
- 13-15, 18, 19. Slabs, partly woven spiral bunches. No. 13 with Katchina motif. No. 15 with quadrupeds. Hopi. Modern (I C 44638, IV B 7438, 4931, 4955, 4926)
16. Plate. Zuñian. Modern (IV C 7094)
20. Plate from the ruins of Kuwiki. Hopi. Early historical period (IV B 2998)
21. Plate from the ruins of Shumopavi. Hopi. Early historical period (IV B 3538)
22. Plate from the ruins of Awatobi. Hopi. Early historical period (IV B 3242)
23. Plate. Hopi. Modern (IV B 2691)
24. Earthenware vessel. Zuñian. Modern (IV B 6842)
25. Pot from the ruins of Awatobi. Hopi. Pre-Columbian period (IV B 3377)
26. Earthenware vessel. Hopi. Modern (IV B 2246)

PLATE CXIII

The originals of Nos. 1-15, 18-19 are in the Linden Museum, Stuttgart; Nos. 16 and 17 in the Berlin Ethnological Museum (North American Section)

1. Painted untanned hide wallet (quiver). Cheyenne (I C 40291)
2. Chief Pattern on a woman's painted cloak made of buffalo hide. Dakota (Sioux) (I C 36102)
3. Pattern on a quiver. Dakota (Sioux) (I C 12591)
4. Knife sheath with flat porcupine quill embroidery. Iroquoian (Private Collection of Patty Frank)

5. Main piece of a woman's saddle bag. Apsárokä (Crow Indians) (I C 48734)
6. Knife sheath with bead-work. Dakota (I C 40370)
7. Upper part of knife sheath. Flat porcupine quill ornaments. Mandan (I C 36114)
8. Sole of "Spirit shoe" with bead-work. Cheyenne (I C 40340)
9. Rosette made of dyed porcupine quills (relief) on a quiver. Mandan (I C 12573)
10. Part of a blanket strip. Apsárokä (Crow Indians) (I C 50467)
11. Part of a blanket strip. Bead-work. Siksika. (Blackfeet) (Schreyvogel Collection)
12. Large rosette. Flat porcupine quill embroidery. Minitari (Hidatsa)
13. Part of strip of leggings. Dakota (Sioux) (I C 50485)
14. Painted untanned hide shield with sun pattern. Apache (I C 44654)
15. Centre piece of a wallet bandoleer. Bead weaving. Dakota (Sioux) (I C 44789)
16. Porcupine quill pattern on hat. Eastern Indians (IV B 8607)
17. Pattern (eagle) made of porcupine quills on a pipe and tobacco bag. Gros Ventre (IV B 6228)
18. Pattern on woman's work-bag. Cheyenne (I C 50324)
19. Wallet woven out of vegetable fibre and wool. Bannack-Shoshonean (I C 1176)

PLATE CXIV

All the originals of this Plate, with the exception of Nos. 1, 5-8, 18, are in the Berlin Ethnological Museum (North American Section)

1. Earthenware vessel. Tennessee River. After Clarence B. Moore, "Aboriginal Sites on Tennessee River," (Philadelphia, 1915) Pl. V 111 2
- 2 and 3. Patterns on fragments. Cholula. Puebla State, Mexico (IV Ca 7897 c and 10868)
- 4, 11, 27. Earthenware vessels. Mexican High Plateau. Aztec Period (IV Ca 2055, 2106, 24434)
- 5-8. Earthenware vessels. Central Mississippi Valley. After "Bureau of American Ethnology" (20th Annual Report, Washington, 1903), Pls. 42 d, 39, 40 a, and 41 a
- 9 and 24. Earthenware vessels. Ranchito de las animas. State of Vera Cruz, Mexico (IV Ca 15595, 15524)
10. Earthenware vessel. S. Andrés Tuxtla. Vera Cruz, Mexico (IV Ca 39204)

- 12 and 17. Earthenware vessels. 12 with skull frieze, 17 with eagle ornaments. Cero Montoso. Vera Cruz, Mexico, Cholula style (IV C a 17619 and 13892)
- 13 and 26. Earthenware vessels. District of Tlaxcala. State of Puebla. High Plateau of Mexico (IV C a 24946 and 24929)
14. Earthenware vessel. Chama. Alta Vera Paz, Guatemala. Style of the Maya picture writings (IV C a 21131)
- 15, 22, 28. Fragments and earthenware vessels. Rio Uluu, Honduras (IV Ca 22374, 21064, 22354)
16. Earthenware vessel. Yucatan, Mexico (IV Ca 5296)
18. Earthenware vessel. Haley Place, Arkansas. After Clarence B. Moore, "Some Aboriginal Sites on Red River," (Philadelphia, 1912), Pl. 40
19. Earthenware vessel coated with stucco. Painted in the manner of the style of the Teotihuacan frescos. San Francisco Chalchicomula, State of Puebla, Mexico (IV C a 35790)
20. Earthenware vessel. Las Mercedes, Costa Rica (IV Ca 27796)
21. Earthenware vessel with decorations in the style of the Maya picture writings Antigua, Guatemala (IV C a 29528)
23. Earthenware vessel. Ometepe Island in Nicaragua (IV Ca 4197b)
25. Earthenware vessel. San Francisco Chalchicomula. State of Puebla, Mexico (IV C a 35720)

PLATE CXV

The originals of Nos. 1 and 3 are in the Linden Museum, Stuttgart, Nos. 2 and 5 in the Natural History Museum, Vienna, Nos. 4, 6-8, 10-16 in the Berlin Ethnological Museum (North and South American Sections), No. 9 in the British Museum, London

- 1 and 3. Ancient Mexican shield; feather mosaic work. Pre-Columbian (19175 and 19176)
2. Ancient Mexican feather ornament adorned with small gold plates. After F. Heger in the Memorial Volume of the Americanists Congress, Vienna, 1908
- 4 and 6. Part views of woven fabric with feather mosaic work. Pachacamac (Peru). Pre-Columbian Period (VA 21630 and 21629)
5. Ancient Mexican feather shield with gold plate ornaments. After F. Heger, "Annalen des Naturhistorischen Hofmuseums" (Vienna 1892), Pl. XIX
7. Ornamental blanket worn over back by men at feasts. Feather mosaic work from N. Brazil (Hinterland of Guiana). About 1800 (VB 95)
- 8 and 10. Feather ornament, mosaic work. Pachacamac (Peru). Pre-Columbian (VA 41872 and 41878)
9. Ancient Mexican skull with stone mosaic work. Pre-Columbian. After Saville, "Turquoise Mosaic Art in Ancient Mexico" (New York, 1922), Pl. XIX

11. Woven fabric with feather mosaic. Malinaltenango (Mexico). Pre-Columbian (Aztec) (IV C 110)
- 12 and 16. Ear-pegs, feather mosaic work. Chuquitanta and Pachacamac (Peru). Pre-Columbian (VA 25044 and 41836)
- 13 and 14. Mussel and ear-peg with stone mosaic. Pachacamac (Peru). Pre-Columbian (VA 41598 and 41595)
15. Bandage worn when dancing, decorated with feather mosaic. Bolivia, 19th Cent. (VA 2772)

PLATE CXVI

The originals of No. 1 in the Hamburg Ethnological Museum, of Nos. 2, 4-7, 10-13, 15-17 in the Berlin Ethnological Museum (South American Section), Nos. 3, 8, 9, 14 in the Linden Museum, Stuttgart. All the fabrics come from Peru and are pre-Columbian

1. Pattern on a poncho.
- 2 and 16. Fabrics. Pachacamac (VA 21631 and 21602-21611)
3. Pattern on a broad strip of edging (Carl Sutorius Collection)
- 4, 5, 7, 15, 17. Fabrics. Ancon. After photographs by Reiß-Stübel, "Das Totenfeld von Ancon" (Berlin), Pl. 69a and 50
- 6, 10-13. Fabrics. Chuquitanta (VA 20694, 20705, 20695, 20704, 20696)
8. Fabrics. Valle de Chancay (Carl Sutorius Collection; IC 53195)
- 9 and 14. Fabrics (Carl Sutorius Collection)

PLATE CXVII

The originals of Nos. 1 and 3 are in the Linden Museum, Stuttgart, Nos. 2, 4-21 in the private collection of Privy Councillor Dr. Eduard Gaffron, Berlin-Schlachtensee. All the fabrics come from Peru and are pre-Columbian

1. Pattern on a blanket. Nazca (Carl Sutorius Collection; IC 53152)
- 2 and 5. Fabrics. Marquez
3. Fabrics. Chancay (Carl Sutorius Collection; IC 53389)
4. Fabric. Ancon
- 6, 10, 20. Fabrics. Pachacamac
7. Fabrics. Rimac Valley
- 8, 9, 11, 15. Fabrics. Nazca
- 12, 16, 17. Fabrics. Chancay
13. Fabrics. Coastal area
14. Fabrics. Candevilla
18. Fabrics. Jupe
- 19 and 21. Fabrics. Huacho

PLATE CXVIII

All the vessels (Nos. 1-17) are in the Linden Museum, Stuttgart, and are the gift of Carl Sutorius. They were all collected in the coastal area of Southern Peru and belong to the pre-Columbian Period

- | | | |
|--------------|---------------|---------------|
| 1. I C 52552 | 7. I C 93340 | 13. I C 52359 |
| 2. I C 52407 | 8. I C 69064 | 14. I C 93358 |
| 3. I C 69046 | 9. I C 69059 | 15. I C 93350 |
| 4. I C 69048 | 10. I C 52355 | 16. I C 52858 |
| 5. I C 93346 | 11. I C 52408 | 17. I C 52576 |
| 6. I C 52565 | 12. I C 52348 | |

PLATE CXIX

The originals of Nos. 1-16, 18-23 are in the Berlin Ethnological Museum (South American Section); No. 17 in the Linden Museum, Stuttgart

- 1, 2 and 4. Vessels from Chimbote (Peru). Pre-Columbian (VA 18431, 18419, 48190)
- 3, 7, 19. Vessels from Inca (Peru). Pre-Columbian (VA 50521, 16440, 16501)
5. Vessel from Trujillo (Peru). Pre-Columbian (VA 47998)
6. Vessel from Santa Helena (Columbia). Pre-Columbian (VA 9313)
- 8 and 21. Vessels of the Ucayali tribes. Peru. Modern (VA 8865 and VB 508)
- 9 and 20. Vessels. Chiriguano (Eastern slope of the Andes). Modern (VA 15740 and 15738)
10. Vessel. Highlands of Peru. Pre-Columbian (VA 8065)
11. Vessel from Frontino (Columbia). Pre-Columbian (VA 2175)
12. Grave urn from Catamarca (Argentine). Pre-Columbian (VC 6487)
13. Vessel. Káua (Rio Negro District). Modern (VB 5828a)
14. Vessel from Cuzco (Peru). Pre-Columbian (VA 7890)

15. Vessel with incised ornamentation. Rio Sucio (Columbia). Pre-Columbian (VA 13123)

16. Vessel. Katapolitani (Rio Negro District). Modern (VB 5807)

17. Pattern on an ancient Peruvian pot. Pre-Columbian (Georg Hübner Collection)

18. Earthenware bottle, Carribean (Lower Maroni, Guiana). Modern (VA 11154a)

22. Earthenware vessel. Coreguaje (East Columbia). Modern (Preuß Collection, 298)

23. Bowl. Tereno. Modern (VB 1084)

PLATE CXX

The originals of Nos. 1, 3, 4, 6-13 are in the Linden Museum, Stuttgart; Nos. 2 and 5 in the Berlin Ethnological Museum (South American Section)

- 1 and 3. Pattern on dance costumes. Kóbéna (E. Columbia). Modern (79873 and 79875)
- 2 and 5. Fabrics from Peru. Transitional Period (VA 8839)
4. Man's belt. Araukan wool embroidery (S. Chile). Modern (Carl Holz Collection)
6. Woman's belt. Araukan wool embroidery (S. Chile). Modern (Carl Holz Collection)
7. Pectoral ornament. Bead work. Konibo. Modern (I C 94116)
8. Woollen fabric wallet. The black pattern woven, the red painted. Konibo. Modern (I C 94069)
9. Pattern on bead-work apron. Guiana. Modern (I C 70308)
10. Necklace, bead work. Konibo (E. Peru). Modern (I C 94077)
- 11 and 12. Two part views of a painted blanket made of guanaco hides sewn together. Tehuélche (Patagonia). Modern (no number)
13. Painting on a bast shirt. Yurakáre (Bolivia). Modern (I C 1501)

INDEX

APPLIQUÉ WORK

Plates XXXII 2, 4, 7 - XXXIV 1-3, 5, 7, 8, 10, 11 - XXXVI 9 - LXI 10 - LXII 1-3, 5, 10, 12 - LXIII 2, 8 - LXVI 5 and 7 - LXXVI 7 - CIV 1-10

BAGS AND WALLETS OF ALL KINDS

Plates XXXI 2 - XXXII 6 and 9 - XXXIV 2, 5, 7, 8 - XLVII 2, 4, 6 - XLVIII 6 - LVII 1 - LVIII 11 - LVIII 7, 9, 10, 12 - LXII 8 and 11 - LXXIII 2 and 5 - LXXIV 1 and 9 - CXIII 1, 3, 19 - CXX 8

BARK FABRICS

Plates CVIII 13 - CVIII 2, 6, 10 - CX 1-13 - CXX 13

BARK ORNAMENTS

Plates LXI 4 and 12 - LXII 4 and 6

BASKET WORK AND PLAITING

Plates XXXII 12 - XXXVII 1-12 - XLIII 7 - LXXXVII 6, 8, 10 - LXXXVIII 1-12 - LXXXIX 1-9 - XC 1-24 - CXI 1, 3-5, 7, 19 - CXII 3, 7, 13-15, 17-19

BASKETS, etc.

Plates XXXVII 2, 5, 7, 9 - 12 - XLIII 7 - XLIX 5 and 7 - LI 1-4 - LXXXVII 6 - LXXXVIII 4, 6, 8, 11 - LXXXIX 5, 7-9 - CXI 1, 3, 4 - CXII 3, 7, 17

BATIK Plates LXXXIII 1-12 - LXXXIV 1-9

BEAD EMBROIDERY, BEAD WEAVING

Plates XXXVIII 1-20 - XLIV 8 - LXI 1 and 3 - CXIII 6, 8, 10, 11, 13, 15 - CXX 7, 9, 10

BRISTLE WORK Plate CXIII 4, 7, 9, 12, 16, 17

CARPETS, FLOOR COVERINGS, MATS, HORSE CLOTHS

Plates XXIII 6 and 8 - XXIV 1-8 - XXV 1-8 - XXXI 4-8, 10, 12 - XXXIV 10 and 11 - XXXVI 4, 8, 10 - XLIII 10 and 12 - XLVIII 12 and 13 - LI 9 - LXIII 1, 3, 8, 10-12 - LXVI 3 and 8 - XCVII 3, 5, 6 - XCVIII 1-9

CLOISONNÉ Plate XCIX 7

CHINA Plates XCIV 2-12 - XCIX 1-6, 7-20

COMBS Plate XXXVIII 9 and 11

COSTUMES

Plates III 11 and 14 - XXXV 1, 3, 4, 7 - LIV 2 and 5 - LV 9 and 12 - LIX 7 and 10 - LX 2, 4-9 - LXII 5 - LXVI 1 and 4 - LXXIX 12 - LXXX 10-C2 - CXII 9

CUSHIONS, LEATHER AND STUFF

Plates XXXII 3 and 8 - XCV 1-6

DRAWINGS Plate CV 13 and 14

EARTHENWARE VESSELS, FAIENCE AND CERAMIC PRODUCTS

Plates II-21 - III 1-14 - III 11 and 14 - IV 1-9 - V 1-10 - VI 1-10 - VII 1-10 - VIII 1-11 - IX 1-19 - X 1-18 - XI 1-15 - XII 1-4, 6, 7, 9, 10, 12 - XIV 1-9 - XV 1-7, 10-13 - XVI 7 - XVII 8 - XVIII 4 and 5 - XIX 1, 3, 4, 6 - 13, 16 - XXV 1-10 - XXVII 12 - XXVIII 13 - XXX 1-17 - XL 16-8, 11-15 - XLIII 1-4, 13-16, 18, 20 - XLV 1-19 - LIII 1-13 - LVII 1 and 5 - LXXVIII 1-12 - LXXX 1-12 - CVI 3 and 6 - CXII 16, 20-26 - CXIV 1-28 - CXVIII 1-17 - CXIX 1-23

EASTER EGGS, PAINTED, Plate LV 1-16

EMBROIDERY

Plates XXXII 10 and 13 - XXXV 1-7 - XXXVI 1-3, 5, 6, 7 - XLII 5, 9, 14 - 20 - XLIII 5, 6, 8, 9, 11, 17, 19 - XLIV 1-4 - 6 - 10, 12, 13 - XLVII 2, 4-6, 11-13 - XLVIII 6, 7, 14 - LI, 3 - 12 - LI 5, 7, 9-15 - LII 1, 3-8, 10 - LIV 2, 4, 5, 7-14 - LVI 4, 6-12 - LVII 3, 6, 8 - LVIII 1 and 3 - LIX 1, 11, 13 - LX 1-12 - LXI 2, 8, 13 - LXII 7-10, 12 - LXIII 4-7, 9 - LXIV 1-7 - LXV 1-11 - LXVI 2, 6, 9, 10 - LXVII 8 - LXIX 1-9 - LXX 1-9 - LXXI 1-13 - LXXII 1-9 - LXXIII 1-11 - LXXIV 1-10 - LXXV 3 - LXXIX 1-14 - LXXX 3, 5, 6, 8, 10 - XCIII 8 and 11 - XCV 1-12 - XCVI 5 - C 1-4, 6-8 - CI 1-14 - CII 1-8 - CXII 2, 6, 12

ENAMEL Plate XCVI 1

ENGRAVED ORNAMENTATIONS

Plate CV 2, 3, 5, 8, 10, 12, 16

FANS Plate XXXII 12

FEATHER MOSAIC WORK

Plate CXVI 8, 10-12, 15, 16

FELT CARPETS Plate LXIII 2 and 8

FURNITURE Plate XLV 7, 10, 15, 19

GLASS MOSAIC WORK, RUN GLASS

Plate XIX 5, 14, 15

GLASS VESSELS Plate XII 5 and 8

GLOVES

Plates XLVII 1, 3, 7-10 - XLVIII 11 - LXI 6 and 13

GOURDS, etc.

Plates XXXIX 1-16 - XL 13 - CVI 1, 4, 5, 8, 9-11

HATS, CAPS, HOODS, HEADGEAR, HEAD ORNAMENTS

Plates XXXII 13 - XXXVI 2, 3, 6, 7 - XXXVII 1, 3, 4, 6 - XXXVIII 1-3 - XLIV 1-3 - L 5 - LX 1, 3, 10-12 - LXII 4, 6, 7, 9 - LXVI 2 and 6 -

- LXVII 1-8 - LXXIV 8 and 10 - LXXXVII 8 and 10 - LXXXVIII 1-3 - LXXXIX 2 - XCII 7 and 10 - CVIII 6 and 10 - CXI 5, 7, 19 - CXV 2
- INLAY WORK IN WOOD Plate XCVI 4 - CVI 2
- INTAGLIO IN FAIENÇA
Plates XVI 4 - XVIII 4
- INTAGLIO IN METAL
Plates III 7-9, 12 - XCVI 2
- IVORY PAINTING Plate XIX 2
- KNITTING AND CROCHET WORK
Plates XXXVI 2, 3, 6, 7 - XLVII 1, 3, 7-10 - XLVIII 10 and 11 - L 2 - LVII 9-13
- LEATHER WORK
Plates XXXII 1-5, 7-9, 11 - XXXIII 1-6, 8, 10-12 - XXXIV 1-11 - LIV 2 and 5 - LXI 13 - LXII 1-3, 5 - LXVI 5 and 7 - XCII 8 - CXIII 1, 3, 4, 14
- MANUSCRIPT-ILLUSTRATIONS AND ILLUMINATIONS
Plate XLII 1-4, 6-8, 10
- MASKS
Plates XL 1, 3, 5, - XLI 3 - LXXXII 1-9 - CVIII 2, 5, 9 - CXI 6, 17, 18, 20, 21
- METAL WORK
Plates III 7-9, 12 - XLIV 5 and 11 - LVII 7
- MODELS OF HOUSES Plate XCI 1-3, 5
- MOSAIC WORK MADE OF FABRICS
Plate LXI 10
- MOSAIC WORK IN SKINS
Plates LXI 6 - LXII 11
- OARS AND BOATS, PAINTED DECORATIONS ON; SHIP ORNAMENTATION
Plates XL 2, 4, 7, 9-12, 14 - XLI 10 - XLV 4 and 5 - XCI 6 - XCII 1, 6, 13, 14 - CVII 1, 3, 4, 6, 7, 17, 18, 20-24 - CXI 10, 12, 15
- PAINTING ON TEXTILES
Plates XLII 11-13 - LXXV 1 - LXXVI 4 - LXXX 9 and 11 - XCVII 1 and 4 - CXI 22 and 24 (vide also "BARK FABRICS")
- PRINTED STUFFS
Plates XLIX 1-4, 6, 8-10 - LII 5 and 7
- PYROGRAPHY
Plates XXXIX 1-16 - CVI 1, 4, 5, 8
- SHIELDS
Plates LXXXVIII 4 - XCII 8 - CVI 6, 15 - CVII 16 and 25 - CXIII 14 - CXV 1, 3, 5
- SHOES, BOOTS, etc.
Plates XXXII 1 and 5 - XXXIV 1 and 3 - LXVI 1, 4, 5, 7 - CXIII 8
- STOCKINGS
Plates XLIII 6, 8, 17, 19 - L 2 - LVII 9, 10, 12, 13
- STONE MOSAIC WORK Plate CVX 9, 13, 14
- STONE ORNAMENTS Plate XII 11
- TAPESTRY Plate XXIII 6 and 8
- TEXTILES
Plates III 1-4, 19 - XII 4, 6, 9 - XIII 1-5 - XVIII 2, 8, 11, 14 - XX 1-12 - XXI 1-13 - XXII 1-9 - XXIII 1-8 - XXXI 1-3, 9, 11, 13 - XXXII 6 - XXXIII 7 and 9 - XXXVI 1 - XLIX 1-4, 6, 8-10 - LII 2 - LIV 1, 3, 6 - LVI 1-3, 5 - LVII 2 and 4 - LVIII 2, 4-12 - LIX 12 - LXVI 8 - LXVIII 1-12 - LXXX 8 - LXXXI 9 - LXXX 1, 2, 4, 7, 9, 11 - LXXXVI 1-18 - LXXXVII 5 and 7 - XCIII 1-14 - XCVI 1, 3, 5-7 - XCVII 2 - C 5 - CII 1-10 - CXI 23 - CXII 1, 4, 5, 11 - CXVI 1-17 - CXVII 1-21 - CXX 2, 4-6, 8
- TILE PATTERNS AND TILES
Plates III 5 and 10 - XII 1 and 3 - XV 6 - XXVI 1-10 - XXVII 1-4, 6, 8 - LIII 5, 8, 9
- TOBACCO PIPES Plates XXXVIII 14 - XLI 7
- WALL, FLOOR, STUCCO AND CARTON PAINTINGS
Plates III 1-6, 10, 13, 15-19 - XV 8 and 9 - XVIII 1, 3, 6, 9, 12, 13 - XXI 1-9 - LXXV 2-5, 7-9 - LXXVI 1, 2, 8, 10-13 - LXXVII 1, 5, 7-9
- WOODCARVING
Plates XVIII 7 - XL 1, 3, 5, 15 - XLI 2-4, 10 - LXXXII 1-9 - LXXXVI 3, 5, 7-13 - LXXXVII 9 - XCI 4 - XCII 6 - CVII 14 and 21 - CVIII 7 - CXI 6, 8, 9, 11, 16-18, 20, 21 - CXII 9
- WOOD PAINTING
Plates XVI 1-6, 8-13 - XVII 1-7, 9-13 - XVIII 2, 7, 10, 11 - XXIX 1-9 - XXXIX 7 and 15 - XL 1-15 - XLI 1-5, 9, 10 - XLVI 1-9 - XLVIII 1-5, 8, 9 - XLIX 5 and 7 - LI 1-4, 6, 8 - LXI 5, 7, 9, 11 - LXXV 6 - LXXVI 3, 5, 6 - LXXVII 2, 4, 6 - LXXXII 1-9 - LXXXV 1-13 - LXXXVI 1-4, 9 - XCI 1-7 - XCII 1-7, 9-14 - CV 1, 4, 6, 7, 9, 11, 15 - CVI 7, 9-11 - CVII 1-25 - CVIII 1, 3, 4, 5, 7-9, 11 - CIX 1-27 - CXI 2, 6, 8-18, 20, 21 - CXII 8-10
- WOODRELIEF
Plates XL 6-9 - XLI 1, 5, 9 - XLV 6, 7, 10, 15, 18, 19 - XLVIII 1, 2, 5, 9 - LXXXV 1, 3-5, 7-13 - XCI 3, 6, 7 - XCII 1-3, 5, 8, 9, 11-13 - CVII 18 - CVIII 1, 3, 4, 8, 11 - CIX 19 - CXI 2, 13, 14

ALPHABETICAL LIST OF NAMES

- Abusir eI Meleq XIV 3, 7, 9 - XVIII 14
Abyssinia XXXV 2, 5, 6 - XXXVII 10 & 12
Achál » Tekke » Turkomania LXV 1-11 - LXVI 3
Achmim XX 7, 8, 10 - XXI 3, 9, 11 - XXII 2
Adamaua XXXIX 12 & 16
Admiralty Islands CVI 1, 4, 9, 11 - CVII 2 & 8
Africa XXX 1 17 - XXXI 1-13 - XXXII 1-13 - XXXIII 1-12 - XXXIV 1-11 - XXXV 1-7 - XXXVI 1-10 - XXXVII 1-12 - XXXVIII 1-20 - XXXIX 1-16 - XL 1-15 - XLI 1-15 - XLII 4 & 7
Africa East XXXVIII 4, 8, 12
Africa North XLII 4 & 7
Africa West XXXIX 1
Agomes CVII 1
Ahtena CXI 1 & 4
Ainu CIV 1-10
Aissi XXX 11
Akelie XLI 5
Aleppo XXIX 1-9
Alexandria XIX 5
Alfures LXXXVIII 2 & 10
Algiers XXX 10 & 11
Alike IV 4
Alombo XLI 1
Alsace XLIV 1 & 3 - XLV 12 & 14
Alta Vera Paz CXIV 14
Altes Land XLIV 11 - XLV 6
Alu CVII 14
Amarna XV 1, 3-5, 7, 8, 12
Amenophis IV. XV 8
America CXI - CXX
Anatolia XXIV 1
Ancon CXVI 4, 5, 7, 15, 17 - CXVII 4
Ancona XLII 2
Andes CXIX 9 & 20
Angola XXXIX 13
Antigua CXIV 21
Apaches CXIII 14
Apsaroka CXIII 5 & 10
Apulia IX 7
Arabia LX 1-12
Aranda CV 7 & 11
Araucanians CXX 4 & 6
Archangel LI 4, 6, 8
Argentina CXIX 12
Arkansas CXIV 18
Armenia XXIV 4 & 6 - LVII 10 & 13
Aru Islands XC 1-24
Asâm LXXX 3 & 7
Ashmunein XIX 4, 6, 10-12
Asia Minor XXIV 3 XXVI 8 - XXVII 7 - XXVIII 12
Assur XII 2 & 3
Assyria XII 2 & 3
Athens V 5 & 8
Attica V 6 & 7 - VII 1, 3, 8 - VIII 7, 8, 10, 11
Australia CV 1-16
Austria XLV 11 - XLVI 15 & 19
Awatobi CXII 22 & 25
Aztecs CXIV 4, 11, 27 - CXV 11
Babylon XII 5 & 8
Babylonia XII 5, 7, 8
Baezaeklik LXXXV 1, 3, 5 - LXXXVII 8
Bagam XXXVI 3
Bagomoyo XXXVIII 4
Bahram V. XIII 1
Baining CVIII 2
Bakuba XXXVI 4, 8, 0 - XLI 3
Bali (Indonesia) LXXXVI 1-13 - XCII 4
Bali (Cameroon) XXXVI 2 & 7
Bamendzing XXXVI 6
Bamum XXXVI 5 - XXXVIII 1, 3, 7, 17 - XXXIX 6, 8, 9
Banat LIV 1 & 4
Bangwa XXXVIII 14 & 19
Bannack » Shoshoni CXIII 19
Bashkirs LVIII 4 & 6
Basques XLIII 7
Basuto XXXVIII 10 & 20
Batak LXXXVI 15 & 17 XCI 1 & 5
Batanga XL 2
Batavia LXXXIV 9
Bateke XLI 6
Bavaria XLIV 12 - XLV 8 - XLVI 16
Begharme XXXIV 9
Benuë XXXIX 3 - XLI 8 & 15
Berbers XXXI 9, 11, 13
Berlin XLII 5, 9, 15, 17, 18
Bern XLVI 6
Bessarabia I 2, 3, 13, 15-21
-
-

- Bessermyanians XLIX 9
 Biel XLVI 6
 Bilchula CXI 6, 11
 Birkis LIV 4
 Biskra XXXII 12
 Bjurs-Secken XLVIII 6
 Blackfeet CXIII 11
 Black Forest XLV 13
 Boeotia V 2, 3, 9, 10 - VI 3 & 10
 Boghazkoi X 2, 5, 8-18
 Bokhara LXVI 1, 2, 4-10 - LXVII 1-8 -
 LXVIII 1-7, 9 - LXIX 1-9 - LXX 1-9 -
 LXXI 1-13 - LXXII 1-3, 6-9
 Bolivia XLIII 16 & 20 - CXV 15 - CXX 13
 Bombay LXXIX 1-14
 Bonerate XCI 3 - XCII 3
 Boni LXXXVIII 5, 7, 9 - XCII 11
 Borneo LXXXVII 1-10 - XCII 12
 Bornu XXXV 4 & 7 - XXXVII 2
 Bougie XXX 10
 Brazil XLIII 13, 15, 18 - CXV 7
 Brietzig XLIV 4
 Brussa XXVI 8
 Bückebug XLIV 8
 Budapest LIII 13
 Buin CVII 11 & 12
 Bukowina LIII 1, 3, 4 - LV 1-16
 Byzantine XIX 3 & 16
 Carbadines LVII 3
 Caere VIII 3, 5, 6, 9
 Cairo XIX 1, 7
 Calabar XXXVI 9 - XXXIX 4 - XLI 2
 Calymnos IX 10
 Cameroon XXXVI 2, 3, 5-7 - XXXVIII 1,
 14, 15 - XXXIX 5, 10, 12, 15, 16 - XL 1-15 -
 XLI 10
 Candevilla CXVII 14
 Cape Beeckey CX 9
 Caribbean Islands CXIX 8
 Catamarca CXIX 12
 Caucasian Tatars LVIII 7-10, 12
 Caucasus LVII 1-13 - LVIII 7-10, 12
 Celebes LXXXVIII 2, 5, 7, 9, 10 - XCI 2 -
 XCII 2, 5, 7-11
 Cero Montoso CXIV 12 & 17
 Ceylon LXXXI 1-12 - LXXXII 1-9
 Chad Sake XXXIV 4 & 6 - XXXVII 2
 Chalcidice VIII 4
 Chancay CXVI 8 - CXVII 3, 12, 16, 17
 Cheyenne CXIII 1, 8, 18
 Chilcat CXI 23
 Chile CXX 4 & 6
 Chimbote CXIX 1, 2, 4
 China XCIII 1-14 - XCV 1-12 - XCVI 1-7
 - XCVII 1-6 - XCVIII 1-9 - XCIX 1-6, 8-20
 C 1-8 - CI 1-14
 Chinese LXXXIII 4, 5, 8 - LXXXIV 4-6
 Chiriguano CXIX 9 & 20
 Chittagong LXXX 4
 Cholula CXIV 2, 3, 12, 17
 Chotsho LXXVI 4 & 9 - LXXVII 1 & 3
 Chuquitanta CXV 12 - CXVI 6, 10-13
 Ciacova LIV 1
 Coimbra XLIII 1 & 4
 Columbia CXIX 6, 11, 15, 22 - CXX 1 & 3
 Congo XLI 4, 6, 9
 Constantinople XIX 16
 Copper River CXI 1 & 4
 Copts XIX 1, 2, 4-15 - XX 1-13 - XXI 1-12
 - XXII 1-9
 Coreguaje CXIX 22
 Corinth VII 5 & 10 - VIII 1-3, 5, 6, 9
 Costarica CXIV 20
 Crete II 1-3, 5, 6, 8, 10-12, 14 - III 1-3, 11
 Crow Indians CXIII 5 & 10
 Cucuteni I 4 & 8
 Cuzco XLIII 6, 8, 17, 19 - CXIX 14
 Cyprus IV 6 - IX 1-6, 8, 9, 11-19
 Czecho Slovakia LIII 6 - LIV 7-14
 Daghestan LVII 7 & 12
 Dajak LXXXVII 1, 3, 4
 Dakoto CXIII 2, 3, 6, 13, 15
 Dalarne XLVIII 6
 Dali IX 8, 9, 11, 14-16
 Dalmatia LVI 1-3, 5, 7, 8, 12
 Damgan XXVII 1 & 4
 Danzig XLVI 10
 Darfur XXXVII 1, 3, 5, 7, 9, 11
 Dér el Medine XV 9 - XVI 7 - XVII 8
 Derwāz LXIV 1-7
 Dimini I 10-12
 Diokiokarto LXXXIII 4-6, 8 - LXXXIV 4 & 5
 Djegga XXXIV 3
 Djen Benuë XLI 8
 Djukum XLI 15
 Douala XXX 11
 Dua•bo•sui XCIII 2, 12-14

- Duala XL 6, 8, 11 - XLI 10
 Dungan LXXIII 2 & 5 - LXXIV 1 & 4
 Durru XXXIX 5
 Egypt XIV 1-9 - XV 1-13 - XVI 1-13 - XVII
 1-13 - XVIII 1-14 - XIX 1, 2, 4-15 - XX 1-13
 XXI 1-12 - XXII 1-9 - XXIII 1-5, 7 -
 XXVIII 5
 Elb Marches XLIV 5
 Elephantine XIX 14 above, 15
 El Hibba XII 7
 Empress Augusta River CVI 3 & 6 -
 CVII 13
 Esthonia L 8
 Facset LIV 4
 Faizābād LXXXVIII 5 & 11
 Fakial LXXX 2
 Fa-nam-moi XCIII 4
 Fatimites XXIII 1-5, 7
 Fauro CVII 21
 Fez XXX 14 & 16
 Fiji Islands CX 2, 10, 12
 Finns XLIX 1 10 - LI-12
 Finland XLVIII 9, 12, 13
 Flores LXXXVIII 4 & 11 - LXXXIX 7 & 9
 Formosa XCII 1
 Frankenstein XLIV 2
 Frankfurt-on-the-Oder XLVI 8 & 11
 France XLIV 1 & 3 - XLV 2 & 14
 Friesland North XLV 5 & 7
 Frontino CXIX 11
 Galicia LIII 2, 5, 8, 9, 12
 Gandu XXXIV 10 & 11
 Garut LXXXIII 2 & 7 - LXXXIV 8
 Gebelin XIV 1 & 4
 Gendertheim XLV 12 & 14
 Georgia LVII 1 & 5
 Germany XLIV 2, 4-13 - XLV 1-10, 13, 17 -
 XLVI 1-5, 7-14, 16-18
 Germany North XLV 3
 Gilyak LXI 4 & 12 - LXII 6
 Gizeh XIX 9
 Glasov L 7 & 11
 Goek-Tepe LXV 10
 Gold LXI 5, 7, 9, 11 - LXII 1-5, 8, 10, 12
 Gombang LXXXIII 9
 Gorong LXXXIX 5 - XCII 13
 Greece II, 5 7, 9 12, 14 - III 1-14 - III 1-19 -
 IV 1-6 - VI 1-9 - VII 1-10 - VIII 1-10 - VIII
 1-11
 Gros Ventre XCIII 17
 Guatemala CXIV 4 & 21
 Guiana CXV 7 - CXIX 18 - CXX 9
 Guipuzcoa XLIII 7
 Hagar-Tuareg XXXIII 1, 4, 8, 11
 Hagia Triada III 3, 15, 17
 Haida CXI 12-16, 18, 19
 Hainan CXIII 1-14
 Haley Place CXIV 18
 Halmahera LXXXVIII 1 & 8 - LXXXIX 1,
 3, 4, 6
 Hanover XLIV 5 - XLV 6
 Hardanger XLVIII 1, 3, 5, 8
 Haussa XXXIV 1 3, 7-11 - XXXV 1 & 3 -
 XXXVI 1 - XXXIX 7 & 9 - XLI 11-14
 Hawara XVIII 3, 6, 9, 12, 13
 Heiltsuk CXI 21
 Hermannstadt LIII 7
 Hesse XLV 10 - XLVI 13 & 17
 Hesse-Nassau XLIV 10 - XLV 9
 Heydekrug XLVII 1-13
 Hidatsa CXIII 12
 Hindeloopen XLV 15, 16, 18, 19
 Hirschberg XLVI 12
 Hittites X 1-18
 Honduras CXIV 15, 22, 28
 Hönheim XLIV 1 & 3
 Hopi CXII 4, 6, 8 15, 18-23, 25, 26
 Huacho CXVII 19 & 21
 Hucule LIII 2, 5, 8, 9, 12
 Hungary LIII 11 & 13
 Hymettus VI 2
 Ica CXIX 3, 7, 19
 Idikut-Shaeri LXXVI 3, 6, 11 - LXXVII
 4 & 6
 Ipara CV 1 & 9
 Indians, Eastern CXIII 16
 Iran LXXVI 9
 Iroquois CXIII 4
 Isnik XXVI 1-7, 10
 Italy IX 7 - XII 2
 Jämtland XLVIII 2, 7, 10, 11, 14 - LXI 8
 Jamund XLV 7 - XLVI 1
 Japan XCI 1 - XCIX 7 - CII 1-8 - CIII 1-9
 - CIV 1-10
 Jassa XLI 1
 Java LXXXIII 1-12 - LXXXIV 1 9
 Jesdegerd XIII 5

- Jews XLII 1-20
 Jim Cummings Camp CV 7
 Jugo Slavia LVI 1-12
 Jupe CXVII 18
 Kabyles XXX 3 & 12
 Kameiros VI 9, VII 2
 Kandy LXXXI 1-12
 K'ang-Hi XCIX 1, 5, 11, 12, 15, 16, 18
 Kaniet CVI 5
 Kapuči LVII 12
 Kasan L 6 & 9 - LVIII 5 - LIX 1-6
 Kasans Tartar LVIII 5 - LIX 1-6
 Katopolitani CXIX 16
 Káua CXIX 15
 Kaura XXXIV 7
 Kazaičevskij LXI 3
 Kazym-Ostyaks LXI 6 - LXII 11
 Keaka XXXIX 15
 Keffi XLI 15
 Kellinghusen XLVI 2, 4, 14
 Khämti LXXX 1
 Khási LXXX 5-8, 10
 Kia-Tsing XCIX 4 & 9
 Kien-Lung XCIX 10, 13, 14
 Kievo LVI 3
 Kimberlay CV 16
 King-té tschën XCIX 1, 4, 5, 9-20
 Kirghiz LXIII 1-12
 Kirish LXXV 9
 Kisser Islands CLII 14
 Klausenburg LIV 2 & 5
 Klazomenai VII 4, 6, 7, 9
 Knossos II 2, 3, 8, 10-12, 14 - III 1, 2, 11, 14, 18
 Kobéna CXX 1 & 3
 Konibo CXX 7, 8, 10
 Korakou II 4 & 7
 Köslin XLV 7 - XLVI 1
 Kossow LIII 2, 5, 8, 9, 12
 Krim-Tartars LVIII 4 & 6
 Kültepe X 1, 6, 7
 Kulyab LXIV 4
 Kum'ariq LXXX 4 & 7
 Kurja LXXVIII 2
 Kutcha LXXII 5 - LXXIII 3, 4, 6-11 -
 LXXXIV 2, 3, 5, 9 - LXXV 4 & 7 - LXXVIII
 1, 3, 10, 12
 Kuwiki CXII 20
 Kwakiutl CXI 2
 Lake Nyassa XXXVIII 16
 Lakka XXXIX 10, 11, 14
 Lamassa CVII 20
 Lamu XXXVII 8
 La Paz XLIII 16 & 20
 Laplie LVI 6
 Lapps LXI 8
 Larnaka IX 13 & 18
 Las Mercedes CXIV 20
 Lassem LXXXIII 11 - LXXXIV 2 & 6
 Lemba XLI 9
 Lepcha LXXX 9 & 11
 Luchai LXXX 4
 Lesghians LVII 9
 Lettnin XLIV 4
 Liberia XXXIII 7 & 9
 Likuala Mossaka XLI 4
 Lindhorst XLIV 8
 Lithuania XLVII 1-13
 Luf CVI 8
 Lusatia XLVI 18
 Luxor XIX 8
 Macassar LXXXVIII 5, 7, 9
 MacDonald Range CV 1 & 9
 Macedonia LVI 4, 6, 9-11
 Makua XXXVIII 12
 Malacca LXXXVIII 12
 Malang LXXXIV 3 & 7
 Malinaltenango CXV 11
 Mamelukes XXVIII 5
 Mandan CXIII 7 & 9
 Mangandsha XXXVIII 16
 Maoris CVIII 7 - CIX 1-27
 Marburg XLVI 13 & 17
 Maroni CXIX 18
 Marquez CXVII 2 & 5
 Marrakesh XXX 9 & 15 - XXXII 3, 8, 11
 Maya CXIV 14 & 21
 Mecca XXXVII 4 & 6
 Melos II 9 - VI 6 & 8
 Memel District XLVII 1-13
 Menacha LX 1-12
 Menidi V 4
 Merv LXV 3
 Meshhed XXVI 9
 Mexico CXIV 2-4, 9-13, 16, 17, 19, 24-27 -
 CXV 1-3, 5, 9, 11
 Miercuria LIV 6

- Mingrelia LVII 6 & 8
 Minitari CXIII 12
 Mioko CVII 10
 Mississippi CXIV 5-8
 Mochlos III 1 & 6
 Moksha-Mordvinians L 4
 Mombassa XXXVIII 8
 Mönchgut XLVI 1, 4, 5
 Moon I 8
 Moors XXXII 3 & 8
 Moravia LIV 14
 Mordvinians L 2, 4, 5
 Morocco XXX 1, 2, 4, 6-9, 14-17 - XXXII 3
 Moseng XCIII 8
 Mosso CVI 3
 Muera XXXVIII 12
 Mülän LXXVIII 4, 6, 8
 Mundang XXXVIII 6
 Mushasui XCIII 1
 Mycenae III 7-9, 12
 Nabeul XXX 5
 Navajo CXII 1 & 5
 Nazca CXVII 1, 8, 9, 11, 15 - CXVIII 1-17
 Nefta XXXI 2 - XXXII 9
 Nerodimnja LVI 4 & 9
 Netherlands XLV 15, 16, 18, 19
 New Britain CVII 16, 19, 22, 25
 New Guinea CVI 3 & 6 - CVII 13
 New Hanover CVI 10 - CVIII 6
 New Hebrides CVIII 10
 New Ireland CVII 5 & 9 - CVIII 1, 3-5, 8, 9, 11
 New Mecklenburg CVII 18
 New Pomerania CX 9
 New Zealand CVIII 7 - CIX 1-27
 Nicaea XXVI 1-7, 10 - XXVIII 3
 Nicaragua CXIV 23
 Niger XXXIV 5 - XXXIX 2
 Nile XXXVIII 2
 Nitra LIV 7, 9, 13
 Nola VII 10 - VIII 2
 Nootka CXI 5, 7-9
 Norway XLVIII 1, 3, 5, 8
 Ntoko XLI 4
 Nupe XXXIX 2
 Obismob LXIV 4
 Ogowe XLI 5
 Ometepe CXIV 23
 Ostenfeld XLVI 5 & 7
 Ostyaks LXI 6 - LXII 11
 Otrovazzo LVI 12
 Owen Spring Hill CV 7 & 11
 Pachacamac CXV 4, 6, 8, 10, 13, 14, 16 - CXVI 2 & 16 - CXVII 6, 10, 20
 Palaikastro II 5
 Paloppo XCII 2 & 5
 Pamir LXIV 1-7
 Pangwe XLI 1
 Parsi LXXIX 1-14
 Patagonia CXX 11 & 12
 Peleo CX 8
 Pensa L 4
 Permyaks L 1 & 3
 Persepolis XII 1, 4, 6, 9
 Persia XI 1-15 - XII 1, 4, 6, 9 - XIII 1-5 - XXIII 6 & 8 - XXIV 2, 5, 8 - XXV 1-8 - XXVI 9 - XXVII 1, 4, 6-11 - XXVIII 1, 2, 4, 7, 8, 10, 11, 13 - LVIII 2
 Peru XLIII 6, 8, 14, 17, 19 - CXV 4, 6, 8, 10, 12-14, 16 - CXVI 1-17 - CXVII 1-21 - CXVIII 1-17 - CXIX 1-5, 7, 8, 10, 14, 17, 19, 21 - CXX 2, 5, 7, 8, 10
 Peshawur LXXVIII 7 & 9
 Petreny I 2, 3, 13, 15-21
 Phylakopi II 9
 Pleasant Island CX 8
 Poland LIII 2, 5, 8, 12
 Pomerania XLIV 13 - XLV 7 - XLVI 10
 Pomo CXII 3, 7, 17
 Port Darwin CV 4
 Porto XLIII 2, 10, 12
 Portugal XLIII 1-4, 10, 12
 Prague XLII 14 & 20
 Preanger LXXXIII 12
 Pressburg LIV 10
 Puebla CXIV 2, 3, 13, 19, 25, 26
 Pueblo CXII
 Punjab LXXVIII 4, 6-9
 Pylos II 13
 Pyritz XLIV 13
 Queensland CV 15
 Qumtura LXXII 4 - LXXV 6 - LXXVI 2 & 8
 Qyzil LXXX 8 - LXXXVI 1, 10, 12, 13 - LXXXVII 2, 5, 7, 9
 Rabat XXX 6
 Raghés XXVII 6 & 10 - XXVIII 2, 4, 7
 Rakhmani I 1 & 14

- Ranchito de las animas CXIV 9 & 24
 Red River CXIV 18
 Rhodos IV 1, 2, 9 - VI 1 & 9 - VII 2
 Rimac-Tal CXVII 7
 Rio Negro CXIX 13 & 16
 Rio Sucio CXIX 15
 Rio Ulua CXIV 15, 22, 28
 Roebuck's Bay CV 8 & 10
 Rotti LXXXVI 1 & 18
 Roumania I 4 & 8 - LIII 1, 3, 4, 7, 10 - LIV 1-6 - LV 1-16
 Rubiana CVII 4 & 23
 Rügen XLVI 1, 4, 5
 Russia I 2, 3, 13, 15-21 - XIX 3 - LI 1-15 - LVIII 5 - LIX 1-6 - LX 1-7, 9-13 - LXII 1-12 - LXIII 1-12
 Russia Southern I 2, 3, 13, 15-21 - XIX 3
 Russia Soviet LI 1-15
 Russians LI 1-15
 Saengim Gorge LXXVI 5
 Saffi XXX 2, 7, 17
 Saghalin CIV
 Sahara XXXIII 2
 Salamanca XLIII 5 & 9
 Salzburg XLVI 15 & 19
 Samaritans XII 11
 Samarkand LXVIII 8 & 10
 Samfara XXXIV 7
 Samoa CX 1, 3-7, 11
 S. Andrés Tuxtla CXIV 10
 S. Francisco Chalchicomula CXIV 19 & 25
 Santa Cruz CVI 7 - CVII 15
 Santa Helena CXIX 6
 Sarapul L 12
 Sassanids XII 10 & 12 - XIII 1-5 - LXXV 8
 Saxony XLV 2
 Scardona LVI 5
 Schagari XXXIV 10 & 11
 Schwalm XLV 10
 Scutari LVIII 11
 Segeberg XLII 12
 Semipalatinsk LXIII 1-3, 6, 8, 10-12
 Sendshirli X 3
 Sesklo I 5, 6, 9
 Sfax XXX 13
 Shoshoni CXIII 19
 Shuli XXXVIII 2
 Shumopavi CXII 21
 Siam XCIV 1-12
 Siksika CXIII 11
 Silesia XLIV 2 - XLVI 3
 Sioux CXIII 2, 3, 6, 13, 15
 Siwa XIX 14 below
 Slesvig, Holstein XLVI 2, 4, 14
 Slovaks LIII 6
 Sokoto XXXIV 10 & 11
 Solomon Islands CVI 2 - CVII 3, 6, 7, 17
 Spain XLII 1 & 3 - XLIII 5, 7, 9, 11
 Spreewald XLV 17 - XLVI 8, 9, 11, 18
 Sredska LVI 10 & 11
 Sugu XXXIX 1
 Sultanabad XXVIII 11 & 13
 Sulu Islands XCI 6 - XCII 6
 Sumatra LXXXVI 15 & 17 - LXXXVIII 3 - XCI 1, 4, 5, 7
 Sumba LXXXVI 2-13, 16
 Sung XCIX 3, 6, 8
 Surgu XII 7
 Susa (Caucasus) LVIII 12
 Susa (Persia) XI 1-15
 Swaheli XXXVII 8
 Sweden XLVIII 2, 6, 10, 11, 14 - LXI 8
 Switzerland XLVI 6
 Syria XXII 9 - XXVII 2, 3, 5, 12 - XVIII 6, 9, 12 - XXIX 1-9 - XLII 6 & 10 - LIX 7, 10-13
 Syrjaens XLIX 1-8, 10
 Tahiti CX 13
 Tai, mau XCIII 6, 9-11
 Tanger XXX 1
 Tau CVI 9 & 11
 Tehuélche CXX 11 & 12
 Tell el Jahudije XV 6
 Temesvár LIV 1
 Tennessee River CXIV 1
 Teotihuacan CXIV 19
 Tereno CXIX 23
 Ternâtê LXXXIX 2
 Tibet XCVI-12 - XCVI 1-7 - XCVII 1-6
 Tiflis LVII 9
 Timbunke CVI 6
 Timor LXXXVIII 6 - LXXXIX 8
 Tlaxcala CXIV 13 & 26
 Tlingit CXI 3, 10, 12, 15, 18, 20, 22-24
 Trömling XLV 2
 Trujillo CXIX 5
 Tchamba XXXIX 3
 Thebes (Egypt) XVIII 1 & 8

- Thebes (Greece) VI 4, 5, 7
 Thessaly I 5, 6, 9-12
 Tiryns III 4-6, 10, 13-16, 19
 Tobungku LXXXVIII 2 & 10
 Toqsu LXXIII 3, 4, 11 - LXXIV 3, 5, 9
 Toradja-Land XCI 2 - XCII 8 & 9
 Tosher XXXII 6
 Transylvania LIII 7 & 10 - LIV 2, 5, 6
 Trencin LIV 8
 Tripolis XXXII 1, 10, 13
 Trondhjem XLVIII 4
 Tsangli I 7
 Tschêng-tê XCIX 17
 Tcheremis L 6 & 9
 Ts'e'tschou-yao XCIX 2, 3, 6, 8
 Tsimshian CXI 17
 Tuareg XXXIII 1-12
 Tumchuq LXXVI 7
 Tunis XXX 13 - XXXI 1 & 3
 Junis XXX 5 - XXXI 2 - XXXII 6 & 9
 Turfan LXXIII 2 & 5 - LXXIV 1, 4, 6-8, 10
 Turcomans LXVI-11 - LXVI 3
 Turks XXIV 7 - XXVI 1-7, 10 - LVIII 1, 3,
 11 - LIX 8 & 9
 Turkestan LXXII 4 & 5 - LXXIII 1-11 -
 LXXIV 1-10 - LXXV 1-9 - LXXVI 1-13 -
 LXXVII 1-9 - LXXVIII 1-3, 5, 10-12
 Tyrol XLV 11
 Uganda XLI 7
 Ucayali CXIX 8 & 21
 Ukraine LII 1-10
 Ushak XXIV 3
 Vallado XLIII 3
 Varadia LIV 3
 Vera Cruz CXIV 9 & 24, 10, 12, 17
 Vershetz LIV 3
 Victoria CV 13 & 14
 Vierlande XLIV 7 & 9
 Vologda LI 1-3
 Velika LVI 1 & 2
 Vulci VII 1 & 3
 Vyatkas L 7, 10-12
 Wadai XXXVII 4
 Waira CVII 24
 Wambundu XLI 9
 Wayao XXXVIII 9 & 11
 Weizacker XLIV 4 & 6 - XLVI 10
 Werben XLIV 6
 Winnert XLVI 5 & 7
 Wittbeck XLVI 5 & 7
 Wjatka XLIX 9
 Worms XLII 8
 Yakuts LXI 1, 2, 10, 13 - LXII 7 & 9
 Yakutsk LXI 1, 2, 10, 13
 Yarkand LXXIII 1
 Yemen LX 1-12
 Yesso CIV 3
 Yloarta CV 11
 Yucatan CXIV 16
 Yung-Tchêng XCIX 19 & 20
 Yuracares CXX 13
 Yuraks LXI 3
 Zara LVI 7 & 8
 Zuider Zee XLV 15, 16, 18, 19
 Zulu XXXVIII 5 & 18
 Zuñi CXII 16 & 24

LIST OF PLATES

- | | |
|---|--|
| <p>I. Ancient Mediterranean Cultures</p> <p>Plate I South Russia, Rumania, Northern Greece. End of the late Stone Age till beginning of the Bronze Age. 4000 to 3000 B. C.</p> <p>" II Crete and Greece. Middle and Late Minoan. About 2000—1400 B. C.</p> <p>" III Crete and Greece. Middle and Late Minoan. About 1750—1200 B. C.</p> <p>" IV Greece. Late Mycenaean. About 1400—1100 B. C.</p> <p>" V Greece. Geometric Style. About 9th—8th Cent. B. C.</p> <p>" VI Greece. Geometric Style. About 8th—7th Cent. B. C.</p> <p>" VII Greece. Black Figure Style. About 7th—6th Cent. B. C.</p> <p>" VIII Greece. Black Figure Style. About 7th—6th Cent. B. C.</p> <p>" IX Cyprus, Kalymnos, Italy. Beginning of Bronze Age (about 4000 B. C.—7th Cent. B. C.)</p> <p>" X Near East. Hittites. 2000 and 700 B. C.</p> <p>" XI Asia Proper. Persia (Susa). End of 4000 B. C.</p> <p>" XII Asia Proper. Ancient and Islamic Epochs. 3000 B. C.—1500 A. D.</p> <p>" XIII Persia. 6th—11th Cent. A. D.</p> <p>" XIV Egypt. Pre-Dynastic Period. 5000 B. C.</p> <p>" XV Egypt. Chiefly 18th Dynasty and 19th Dynasty</p> <p>" XVI Egypt. 18th Dynasty and Late New Kingdom</p> <p>" XVII Egypt. 18th Dynasty and Late New Kingdom</p> <p>" XVIII Egypt. Chiefly Late New Kingdom and Late Period</p> <p>" XIX Egypt, Southern Russia, Constantinople. Late Period, Coptic and Byzantine Period. 3rd Cent. B. C.—12th Cent. A. D.</p> <p>" XX Egypt. Coptic Period. 3rd—6th Cent. A. D.</p> <p>" XXI Egypt. Coptic Period. 4th—6th Cent. A. D.</p> <p>" XXII Egypt and Syria. Early Christian Period. 4th—7th Cent. A. D.</p> <p>II. Islamic Culture</p> <p>Plate XXIII Islamic Orient. Egyptian and Persian. 10th—11th and 17th Cent. A. D.</p> | <p>Plate XXIV Islamic Orient. Persia—Asia Minor. 14th—17th Cent. A. D.</p> <p>" XXV Islamic Orient. Persia. 16th Cent. A. D.</p> <p>" XXVI Islamic Orient. Turkey and Persia. 15th—17th Cent. A. D.</p> <p>" XXVII Islamic Orient. Persia and Syria. 13th—15th Cent. A. D.</p> <p>" XXVIII Islamic Orient. Chiefly 13th—17th Cent. A. D.</p> <p>" XXIX Syria (Aleppo). Circa 1600 A. D.</p> <p style="text-align: center;">III. Africa</p> <p>Plate XXX North West Africa. Modern Times</p> <p>" XXXI North West Africa. Modern Times</p> <p>" XXXII North West Africa. Present Time</p> <p>" XXXIII Africa. Sahara (Tuareg) and Liberia. Present Time</p> <p>" XXXIV Africa. Niger Territory. Modern Times</p> <p>" XXXV Africa. Soudan and Abyssinia. Modern Times</p> <p>" XXXVI Africa. Soudan, Congo, Cameroon. Modern Times</p> <p>" XXXVII North East Africa. Present Time</p> <p>" XXXVIII Africa. Modern Times</p> <p>" XXXIX West Africa. Modern Times</p> <p>" XL Africa. Cameroon coast. Modern Times</p> <p>" XLI West and East Africa. Modern Times</p> <p>IV. Modern European Peasant Arts and Crafts</p> <p>Plate XLII Jews in Syria, North Africa, Europe. 9th—19th Cent.</p> <p>" XLIII Portugal, Spain, Peru, Bolivia, Brazil. 19th Cent.</p> <p>" XLIV Germany and France (Alsace). 19th Cent.</p> <p>" XLV Germany, France (Alsace), Netherlands, Austria. 18th and 19th Cent.</p> <p>" XLVI Germany, Austria, Switzerland. 18th and 19th Cent.</p> <p>" XLVII Lithuania (Memel District). Present Time</p> <p>" XLVIII Norway, Sweden, West Finland. 18th and 19th Cent.</p> <p>" XLIX Finnish peoples in Russia. Syrjaens and Bessermjaens. Present Time</p> <p>" L Estland and Finnish peoples in Russia. Present Time</p> |
|---|--|

| | | | |
|-------|---|-------|--|
| Plate | LI Russia. Great Russians. Present Time | Plate | LXXXVII Borneo. Present Time |
| " | LII Ukraine. Present Time | " | LXXXVIII Further India(Malacca)and Malay Archipelago. Present Time |
| " | LIII Poland, Czecho Slovakia, Hungary, Rumania. Present Time | " | LXXXIX Malay Archipelago. Present Time |
| " | LIV Rumania and Czecho Slovakia. Present Time | " | XC Aru Islands. Present Time |
| " | LV Rumania(Bukowina). Present Time | " | XCI Malay Archipelago. Sumatra, Celebes, Sulu Islands, Bonerate. Present Time |
| " | LVI Jugo Slavia. Dalmatia and Macedonia. Present Time | " | XCII Malay Archipelago and Formosa. Present Time |
| | V. Asia | " | XCIII Hainan. Present Time |
| Plate | LVII Caucasus. Present Time | " | XCIV Siam. Modern Times |
| " | LVIII Turkey, Tartars, Persia. Modern Times | " | XCV Tibet (China). Modern Times |
| " | LIX Tartars, Turks, Syrians. Present Time | " | XCVI Tibet (China). Modern Times |
| " | LX Arabia (Yemen). Present Time | " | XCVII Tibet (China). Modern Times |
| " | LXI Laps and Siberian peoples. Present Time | " | XCVIII China. Modern Times |
| " | LXII Siberian peoples. Present Time | " | XCIX China and Japan. Sung-Modern Times |
| " | LXIII Kirghiz. Present Time | " | C China. Modern Times |
| " | LXIV Pamir Mountains. Present Time | " | CI China. Modern Times |
| " | LXV Turcomans. Present Time | " | CII Japan. Modern Times |
| " | LXVI Turcomans and Bokhara. Present Time | " | CIII Japan. Modern Times |
| " | LXVII Bokhara. Present Time | " | CIV Japan (Amu). Modern Times |
| " | LXVIII Bokhara and Samarkand. Present Time | | VI. Australia and Oceania |
| " | LXIX Bokhara. Present Time | Plate | CV Australia. Present Time |
| " | LXX Bokhara. Present Time | " | CVI Oceania. Present Time |
| " | LXXI Bokhara. Present Time | " | CVII Oceania. Modern Times |
| " | LXXII Bokhara and Chinese-Turkestan. Present Time | " | CVIII Oceania. Present Time |
| " | LXXIII Chinese Turkestan. Modern Times | " | CIX New Zealand. 19th Cent. |
| " | LXXIV Chinese Turkestan. Modern Times | " | CX Oceania. Present Time |
| " | LXXV Chinese Turkestan. 7th-12th Cent. A. D. | | VII. America |
| " | LXXVI Chinese Turkestan. 7th-12th Cent. A. D. | Plate | CXI North West America. 1st and 2nd third of 19th Cent. |
| " | LXXVII Chinese Turkestan. 7th-12th Cent. A. D. | " | CXII North America. Pueblo District and California. Pre-Columbian-Modern Times |
| " | LXXVIII Chinese Turkestan and India Proper (Punjab). Modern Times | " | CXIII North America. Prairies and East. Present Time |
| " | LXXIX India Proper. Bombay. Present Time | " | CXIV Mexico and Central America. Pre-Columbian Period |
| " | LXXX North Eastern part of India Proper. Himalaya, Assam, etc. Present Time | " | CXV Mexico, Peru, Brazil, Bolivia. Pre-Columbian Period and 19th Cent. |
| " | LXXXI Ceylon (Candy). Present Time | " | CXVI Peru. Pre-Columbian Period |
| " | LXXXII Ceylon. Present Time | " | CXVII Peru. Pre-Columbian Period |
| " | LXXXIII Java. Present Time | " | CXVIII Peru (Nazca). Pre-Columbian Period |
| " | LXXXIV Java. Present Time | " | CXIX South America. Pre-Columbian and Modern Times |
| " | LXXXV Bali. Present Time | " | CXX South America. Post-Columbian and Modern Times |
| " | LXXXVI Malay Archipelago. Sumba, Rotti, Sumatra. Present Time | | |



SOUTHERN RUSSIA, RUMAINIA,
NORTHERN GREECE
End of the neo-Stone Age
till beginning of Bronze Age

SODRUSSLAND, RUMANIEN,
NORDGRIECHENLAND
Ende der jüngeren Steinzeit
bis Anfang der Bronzezeit

RUSSIE MÉRIDIIONALE, ROUMANIE,
GRÈCE SEPTENTRIONALE
Fin de l'âge néolithique et
commencement de l'âge de bronze



CRETE AND GREECE

Middle and Late Minoan
circa 2000-1200 B.C.

KRETA
UND GRIECHENLAND

Mittel- und Spätminoisch
etwa 2000-1200 v. Chr.

CRÈTE ET GRÈCE

Minoen (époque moyenne et dernière époque)
environ 2000 à 1200 avant J.-Chr.



CRETE AND GREECE

About 2000 B C
Middle and late Minoan

KRETA UND GRIECHENLAND

2. Jahrtausend v. Chr.
Mittel- und Spätminoisch

CRÈTE ET GRÈCE

2^e millénaire av. J.-Chr.
Milieu et fin de l'époque
minoenne



7



8



9

GRÈCE
Antiquité
Dernière phase de l'âge mycénien



5



6

GRIECHENLAND
Altertum
Spätmykenisch



2



3

GREECE
Antiquity
Late Mycenaean



1



2



3



4



5



6



7



8



9



10

GREECE
Antiquity
Geometrical period

GRIECHENLAND
Altertum
Geometrischer Stil

GRÈCE
Antiquité
Style géométrique



1



2



3



4



5



6



7



8



9



10

GREECE
Antiquity
Geometrical period

GRIECHENLAND
Altertum
Geometrischer Stil

GRÈCE
Antiquité
Style géométrique



1



2



3



4



5



6

7



8



9



10

GREECE
Antiquity
Black-figured style

GRIECHENLAND
Altertum
Schwarzfiguriger Stil

GRÈCE
Antiquité
Style à figures noires



1



2



3



4



5



6



7



8



10

GREECE
Antiquity
Black-figured style

GRIECHENLAND
Altertum
Schwarzfiguriger Stil

GRÈCE
Antiquité
Style à figures noires



CYPRUS, KALYMNOS,
ITALY

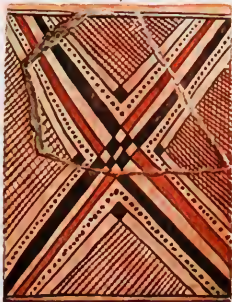
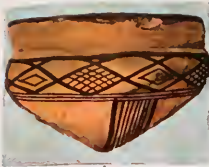
Beginning of the Bronze Age
-7th Century B.C.

CYPERN, KALYMNOS,
ITALIEN

Anfang der Bronzezeit
-7. Jahrhundert v. Chr.

CHYPRE, KALYMNOS,
ITALIE

Commencement de l'âge de bronze
-VII^e siècle av. J.-Chr.



NEAR EAST
Antiquity
Hittites

VORDERER ORIENT
Altertum
Hethiter

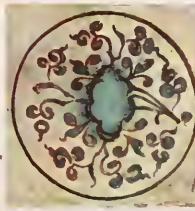
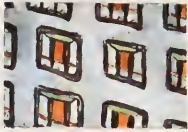
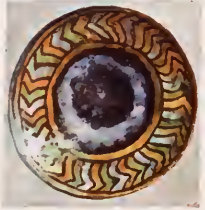
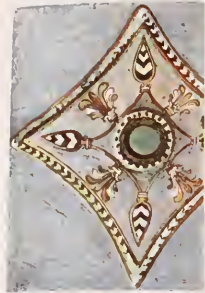
PROCHE ORIENT
Antiquité
Hétéens



NEAR EAST
 Persia (Susa)
 About 3000 B. C.

VORDERASIEN
 Persien (Susa)
 3. Jahrtausend v. Chr.

PROCHE ORIENT
 Perse (Suse)
 3^e millenaire av. J.-Chr.



12

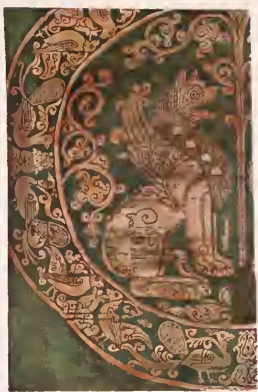
PROCHE ORIENT
Antiquité et
âge musulman

11

VORDERASIEN
Altertum und
islamische Zeit

10

NEAR EAST
Antiquity and
Islamic period



PERSIA
6th – 11th Century

PERSIEN
6. – 11. Jahrhundert

PERSE
VI^e – XI^e siècle



1



2



3



4



5



6



7



8

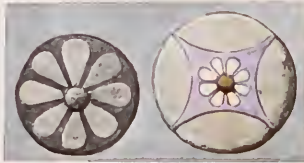


9

EGYPT
Pre-dynastic age

AEGYPTEN
Vordynastische Zeit

ÉGYPTE
Âge préhistorique



EGYPT
XVIIIth and XIXth dyn.

AEGYPTEN
18. und 19 Dynastie

ÉGYPTÉ
XVIII^e et XIX^e dyn.



12

13

EGYPT
Late new kingdom

AEGYPTEN
Spates Neues Reich

ÉGYPTÉ
Fin du nouvel empire



1



2



3



4



5



9



6



10



7



11



12



13

EGYPT
Late new kingdom

AEGYPTEN
Spates Neues Reich

ÉGYPTE
Fin du nouvel empire



EGYPT
Late new kingdom and Saitic-Roman period

AEGYPTEN
Spates Neues Reich und Späzeit

ÉGYPTE
Fin du nouvel empire et époque saïte



1



2



3



4



5



6



7



8



9



10



11



12



13



14



15

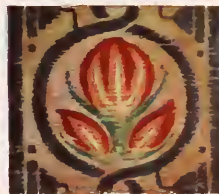


16

EGYPT
Saitic and Coptic period

AEGYPTEN
Spätzeit und
koptische Zeit

ÉGYPTÉ
Époque saïte et chrétienne



10

11

12

EGYPT
Coptic period
3rd–7th century

ÄGYPTEN
Koptische Zeit
3. – 7. Jahrhundert

ÉGYPTÉ
Époque chrétienne
III^e – VII^e siècle



EGYPT
Coptic period
3rd—7th century

AGYPTEN
Koptische Zeit
3.—7. Jahrhundert

ÉGYPTE
Époque chrétienne
III^e—VII^e siècle



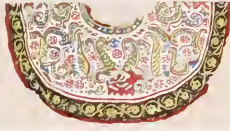
1



2



3



4



5



6



7



8

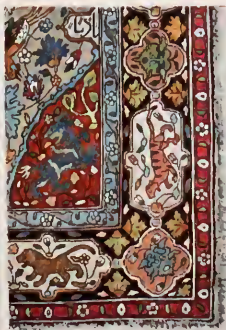


9

EGYPT AND SYRIA
Early Christian period

AEGYPTEN UND SYRIEN
Frühchristliche Zeit

ÉGYPTE ET SYRIE
Première époque
de l'ère chrétienne



6

7

8

NEAR EAST

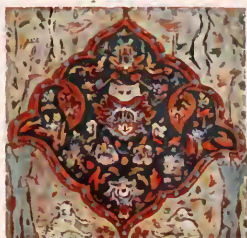
Egypt (10th and 11th century)
Persia (17th century)

ISLAMISCHER ORIENT

Ägypten (10.—11. Jahrh.)
Persien (17. Jahrh.)

ORIENT MUSULMAN

Égypte (X^e—XI^e siècle)
Perse (XVII^e siècle)



6

7

8

NEAR EAST

Persia - Asia Minor
15th - 17th century

ISLAMISCHER ORIENT

Persien - Kleinasien
15. - 17. Jahrhundert

ORIENT MUSULMAN

Perse - Asie Mineure
XV^e - XVII^e siècle



1



2



3



4



5



6



7

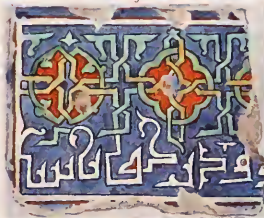
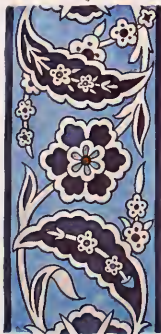
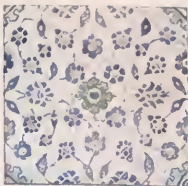
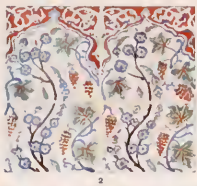


8

NEAR EAST
Persia
16th century

ISLAMISCHER ORIENT
Persien
16. Jahrhundert

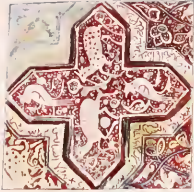
ORIENT MUSULMAN
Perse
XVI^e siècle



NEAR EAST
Turkey and Persia
15th - 17th century

ISLAMISCHER ORIENT
Türkei und Persien
15.-17. Jahrhundert

ORIENT MUSULMAN
Turquie et Perse
XV^e - XVII^e siècle



ORIENT MUSULMAN

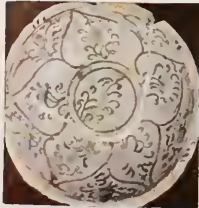
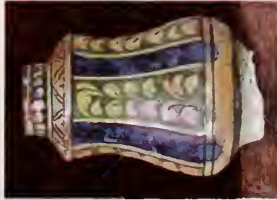
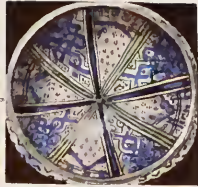
Persie et Syrie
XIIIe—XVIIe siècle

ISLAMISCHER ORIENT

Persien und Syrien
13.—16. Jahrhundert

NEAR EAST

Persia and Syria
13th—16th century



ISLAMISCHER ORIENT ORIENT MUSULMAN
XIII—XVII^e siècle

NEAR EAST
Islamic period
13^e—16^e century



1



2



3



4



5



6



7



8



9

SYRIA (ALEPPO)
circa 1600

SYRIEN (ALEPPO)
um 1600

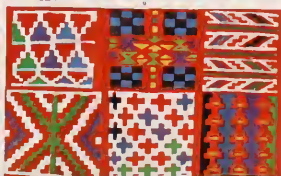
SYRIE (ALEP)
vers 1600



NORTH WEST AFRICA
Present time

NORDWESTAFRIKA
Neuzeit

NORD-OUEST AFRICAÏN
Epoque moderne



NORTH WEST AFRICA
Present Time

NORDWESTAFRIKA
Neuzeit

NORD-OUEST AFRICAIN
Époque moderne



NORTH-WEST AFRICA
Present Time

NORDWESTAFRIKA
Gegenwart

NORD-OUEST AFRICAÏN
Époque actuelle



AFRIKA
Sahara (Tuareg) und Liberia
Present Time

AFRIKA
Sahara (Tuareg) und Liberia
Gegenwart

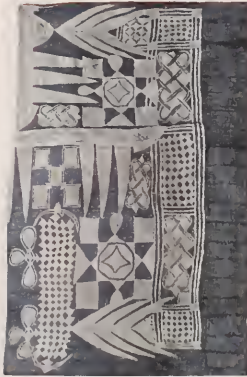
AFRIQUE
Sahara (Touareg) et Liberia
Temps présent



AFRICA
Niger district
Present Time

AFRIKA
Nigergebiet
Neuzeit

AFRIQUE
District du Niger
Époque moderne



AFRIQUE
Soudan et Abyssinie
Epoque moderne

AFRIKA
Sudan und Abessinien
Neuzeit

AFRICA
Sudan and Abyssinian
Present time



AFRIQUE
Soudan, Congo, Cameroun
Epoque moderne



AFRIKA
Sudan, Kongo, Kamerun
Neuzett



AFRICA
Sudan, Congo, Cameroon
Present Time



NORTH-EAST AFRICA
Present Time

NORDOSTAFRIKA
Gegenwart

NORD-EST AFRICAÏN
Époque actuelle



AFRICA
Present Time

AFRIKA
Neuzeit

AFRIQUE
Époque moderne



WEST AFRICA
Present Time

WESTAFRIKA
Neuzeit

OUEST AFRICAIN
Époque moderne



AFRICA
Cameroon coast
Present Time

AFRIKA
Küste von Kamerun
Neuzeit

AFRIQUE
Côte du Cameroun
Époque moderne



WEST AND EAST AFRICA
Modern Times

WEST- UND OSTAFRIKA
Neuzeit

AFRIQUE OCCIDENTALE
ET AFRIQUE ORIENTALE
Époque moderne



JEWES IN SYRIA,
NORTH AFRICA, EUROPE
9th-19th Century

JUDEN IN SYRIEN,
NORDAFRIKA, EUROPA
9.-19. Jahrhundert

JUIFS EN SYRIE, AFRIQUE
SEPTENTRIONALE, EUROPE
IX^e-XIX^e siècle



PORTUGAL, SPAIN, PERU,
BOLIVIA, BRAZIL
19th Century

PORTUGAL, SPANIEN, PERU,
BOLIVIEN, BRASILIEN
19. Jahrhundert

PORTUGAL, ESPAGNE, PÉROU,
BOLIVIE, BRÉSIL
XIX^e siècle



GERMANY
AND FRANCE (ALSACE)
19th Century

DEUTSCHLAND
UND FRANKREICH (ELSASS)
19. Jahrhundert

ALLEMAGNE
ET FRANCE (ALSACE)
XIX^e siècle



GERMANY,
FRANCE (ALSACE),
NETHERLANDS, AUSTRIA
18. und 19. Century

DEUTSCHLAND,
FRANKREICH (ELSASS),
NIEDERLANDE, ÖSTERREICH
18. und 19. Jahrhundert

ALLEMAGNE,
FRANCE (ALSACE),
PAYS-BAS, AUTRICHE
XVIII. et XIX. siècles



GERMANY, AUSTRIA,
SWITZERLAND
18th and 19th Century

DEUTSCHLAND
ÖSTERREICH, SCHWEIZ
18. und 19. Jahrhundert

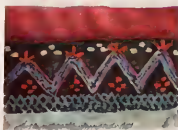
ALLEMAGNE, AUTRICHE,
SUISSE
XVIII^e et XIX^e siècles



LITHUANIA
(MEMEL DISTRICT)
Present Time

LITAUEN
(MEMELGEBIET)
Gegenwart

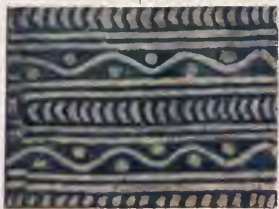
LITHUANIE
(DISTRICT DE MEMEL)
Époque actuelle



NORWAY, SWEDEN,
WESTERN FINLAND
18th—19th Century

NORWEGEN, SCHWEDEN,
WESTFINNLAND
18.—19. Jahrhundert

NORVEGE, SUÈDE,
FINLANDE OCCIDENTALE
XVIII^e et XIX^e siècles



FINNISH TRIBES
IN RUSSIA

Syrjanes and Bessermianes
Present Time

FINNISCHE VÖLKER
IN RUSSLAND

Syrjanen und Bessermjänen
Gegenwart

PEUPLADES FINNOISES
DE RUSSIE

Zyriènes et Bessermiènes
Temps présent



10

11

12

ESTHONIA AND FINISH
PEOPLES OF RUSSIA

Present Time

ESTLAND UND FINNISCHE
VÖLKER RUSSLANDS

Gegenwart

ESTHONIE ET PEUPLES
FINNOIS DE RUSSIE

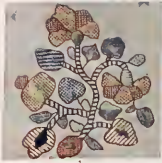
Époque actuelle



RUSSIA
Great-Russians
Present Time

RUSLAND
Großrussen
Gegenwart

RUSSIE
Grand-Russiens
Temps présent



UKRAINE
Present Time

UKRAINE
Gegenwart

UKRAINE
Temps present



POLAND,
CZECHO-SLOVAKIA,
HUNGARY, RUMANIA
Present Time

POLEN,
TSCHECHOSLOVAKEI,
UNGARN, RUMANIEN
Gegenwart

POLOGNE,
TCHÉCOSLOVAQUIE,
HONGRIE, ROUMANIE
Époque actuelle



RUMANIA AND
CZECHO-SLOVAKIA
Present Time

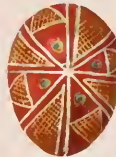
RUMANIEN UND
TSCHECHOSLOVAKEI
Gegenwart

ROUMANIE ET
TCHÉCOSLOVAQUIE
Époque actuelle



3

4



5

6

7

8



9

10

11

12



13

14

15

16

ROUMANIA (BUKOWINA)
Present Time

RUMANIEN (BUKOWINA)
Gegenwart

ROUMANIE (BUKOWINE)
Époque actuelle



YUGO SLAVIA
Dalmatia and Macedonia
Present Time

JUGOSLAVIEN
Dalmatien und Macedonien
Gegenwart

YOUGOSLAVIE
Dalmatie et Macedoine
Temps présent



CAUCASUS
Present Time

KAUKASUS
Gegenwart

CAUCASE
Époque actuelle



10

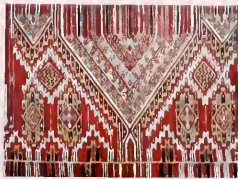
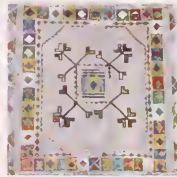
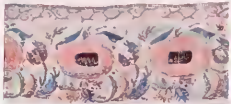
11

12

TURKEY, TATARY, PERSIA
Modern Times

TURKEI, TATAREN, PERSIEN
Neuzeit

TURQUIE, TARTARIE, PERSE
Temps moderne



TARTARS, TURKS, SYRIANS
Present Time

TATAREN, TÖRKEN, SYRER
Gegenwart

TARTARES, TURCS, SYRIENS
Époque actuelle



10

11

12

ARABIA (YEMEN)
Present Time

ARABIEN (YEMEN)
Gegenwart

ARABIE (YÉMEN)
Époque actuelle



LAP AND SIBERIAN
PEOPLES
Present Time

LAPPEN UND SIBIRISCHE
VÖLKER
Gegenwart

LAPONS ET PEUPLES
SIBÉRIENS
Époque actuelle



10

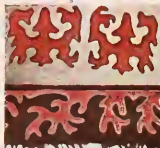
11

12

SIBIRIAN PEOPLES
Present Time

SIBIRISCHE VÖLKER
Gegenwart

PEUPLES SIBÉRIENS
Époque actuelle



10

11

12

KIRGHIZ
Present Time

KIRGISEN
Gegenwart

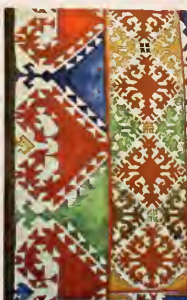
KIRGHIZ
Temps présent



MONTAGNES DU PAMIR
Époque actuelle



PAMIRGEBIRGE
Gegenwart



PAMIR MOUNTAINS
Present Time



1



2



3



4



5



6



7



8



9



10

TURKOMANIA
Present Time

TURKMENEN
Gegenwart

TURKMÈNES
Époque actuelle



1



2



3



4



5



6



7



8



9



10

TURKOMANS AND BOKHARA
Present Time

TURKMENEN UND BUCHARA
Gegenwart

TURKMÈNES ET BOUKHARIE
Temps présent



1



2



3



4



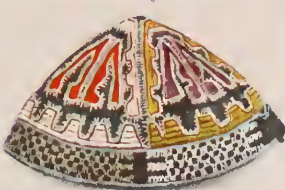
5



6



7



8

BOKHARA
Present Time

BUCHARA
Gegenwart

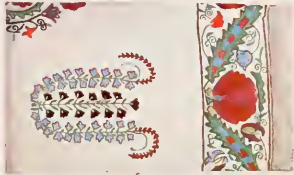
BOUKHARIE
Époque actuelle



BOUKHARIE ET
SAMARKAND
Époque actuelle

BUCHARA UND
SAMARKAND
Gegenwart

BOKHARA AND
SAMARKAND
Present Time



BOKHARA
Present Time

BUCHARA
Gegenwart

BOUKHARIE
Temps présent



BOKHARA
Present Time

BUKHARA
Gegenwart

BOUKHARIE
Temps présent



BOKHARA
Present Time

BUCHARA
Gegenwart

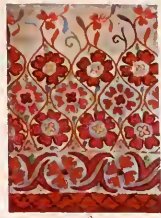
BOUKHARIE
Époque actuelle



BOKHARA AND
CHINO-TURKISTAN
Present Time

BUCHARA UND
CHINESISCH-TURKESTAN
Gegenwart

BOUKHARIE ET
TURKESTAN CHINOIS
Époque actuelle



CHINESE-TURKESTAN
Present Time

CHINESISCH-TURKESTAN
Neuzeit

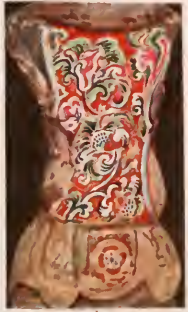
TURKESTAN CHINOIS
Époque moderne



CHINESE-TURKESTAN
Modern Times

CHINESISCH-TURKESTAN
Neuzeit

TURKESTAN CHINOIS
Époque moderne



CHINO-TURKISTAN
7th-12th Century

CHINESISCH-TURKESTAN
7.-12. Jahrhundert

TURKESTAN CHINOIS
VIIe-XIIe siècle



TURKESTAN CHINOIS
VII^e-XII^e siècle

CHINESISCH-TURKESTAN
7 12. Jahrhundert

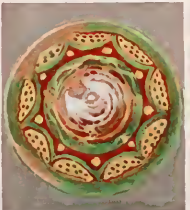
CHINESE-TURKESTAN
7^e-12^e Century



CHINO-TURKISTAN
7th—12th Century

CHINESISCH-TURKISTAN
7. -12. Jahrhundert

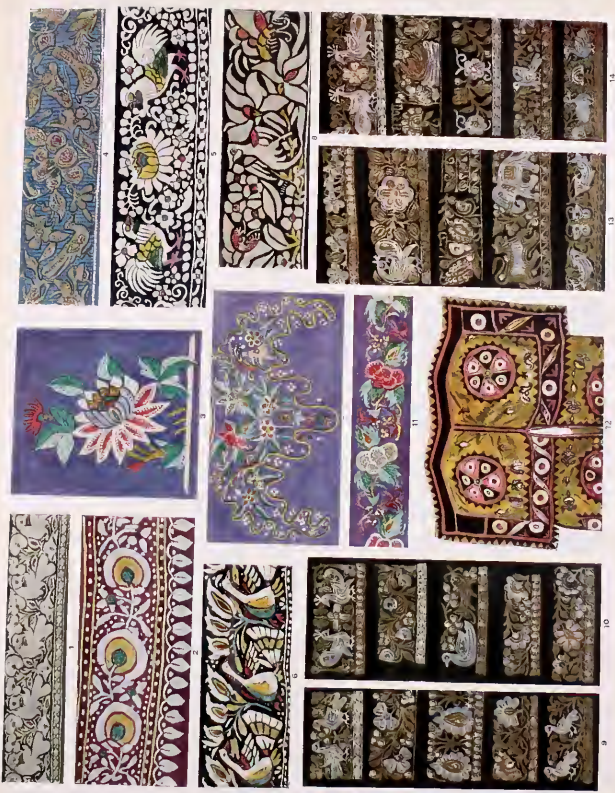
TURKISTAN CHINOIS
VII^e—XII^e siècle



CHINESE-TURKESTAN AND
INDIA PROPER (PUNJAB)
Present Time

CHINESISCH-TURKESTAN UND
VORDERINDIEN (PANDSCHAB)
Neuzeit

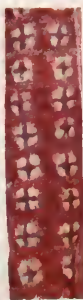
TURKESTAN CHINOIS ET
INDE (PENDJAB)
Époque moderne



INDIA
Bombay
Present Time

VORDERINDIEN
Bombay
Gegenwart

INDE
Bombay
Temps present



NORTH-EASTERN PART
OF INDIA PROPER

Himalaya, Assam, etc.
Present Time

NORDÖSTLICHER TEIL
VORDERINDIENS

Himalaya, Assam usw
Gegenwart

NORD-EST DE LA PÉNINSULE
HINDOUSTANIQUE

Himalaya, Assam, etc.
Temps présent



1



2



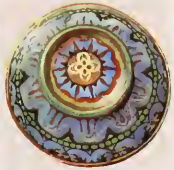
3



4



5



6



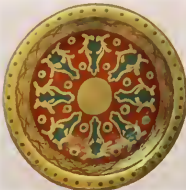
7



8



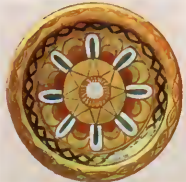
9



10



11



12

CEYLON (KANDY)
Present Time

CEYLON (KANDY)
Gegenwart

CEYLAN (KANDY)
Temps présent



1



2



3



4



5



6



7



8

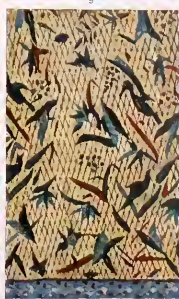


9

CEYLON
Present Time

CEYLON
Gegenwart

CEYLAN
Temps présent



JAVA
Present Time

JAVA
Gegenwart

JAVA
Temps présent



JAVA
Temps présent



JAVA
Gegenwart



JAVA
Present Time



BALI
Present Time

BALI
Gegenwart

BALI
Temps présent



MALAY ARCHIPELAGO
Sumba, Rotti, Sumatra
Present Time

MALAIISCHER ARCHIPEL
Sumba, Rotti, Sumatra
Gegenwart

ARCHIPEL MALAIS
Soumba, Rotti, Sumatra
Époque actuelle



BORNEO
Present Time

BORNEO
Gegenwart

BORNEO
Époque actuelle



FURTHER INDIA (MALACCA)
AND MALAY ARCHIPELAGO
Present Time

HINTERINDIEN (MALAKKA)
UND MALAISSCHER ARCHIPEL
Gegenwart

INDO-CHINE (MALACCA)
ET ARCHIPEL INDIEN
Temps présent



MALAY ARCHIPELAGO
Present Time

MALAISSCHER ARCHIPEL
Gegenwart

ARCHIPEL INDIEN
Temps présent



ARU ISLANDS
Present Time

ARU-INSELN
Gegenwart

ILES AROU
Temps présent



MALAY ARCHIPELAGO

Sumatra, Celebes,
Sulu Islands, Bonerate
Present Time

MALAIISCHER ARCHIPEL

Sumatra, Celebes,
Sulu-Inseln, Bonerate
Gegenwart

MALAÏSIE

Sumatra, Célèbes,
Îles Soulou, Bonérate
Temps présent



MALAY ARCHIPELAGO
AND FORMOSA
Present Time

MALAIISCHER ARCHIPEL
UND FORMOSA
Gegenwart

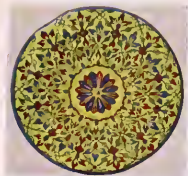
ARCHIPEL MALAIS
ET FORMOSE
Époque actuelle



HAINAN
Present Time

HAINAN
Gegenwart

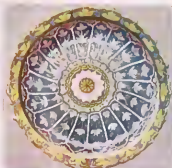
HAINAN
Époque actuelle



1



2



3



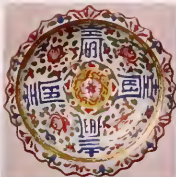
4



5



6



7



8



9



10



11

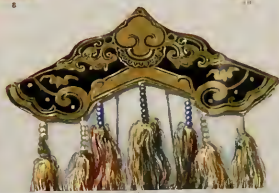


12

SIAM
Modern Times

SIAM
Neuzeit

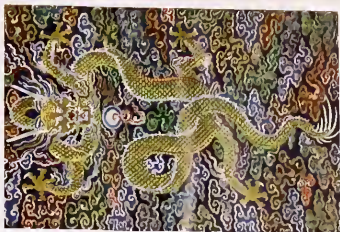
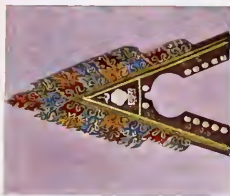
SIAM
Temps moderne



TIBET (CHINA)
Modern Times

TIBET (CHINA)
Neuzeit

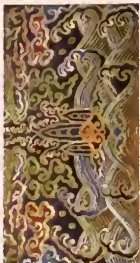
TIBET (CHINE)
Temps moderne



TIBET (CHINE)
Temps moderne

TIBET (CHINA)
Neuzzeit

TIBET (CHINA)
Modern Times



TIBET (CHINE)
Epoque moderne

TIBET (CHINA)
Neuzent

TIBET (CHINA)
Modern Times



CHINA
Modern Times

CHINA
Neuzeit

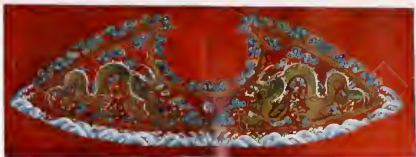
CHINE
Époque moderne



CHINA AND JAPAN
Sung-Modern Times

CHINA UND JAPAN
Sung-Neuzeit

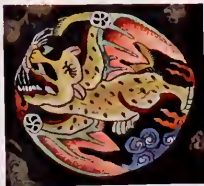
CHINE ET JAPON
Sung-Époque moderne



CHINA
Modern Times

CHINA
Neuzeit

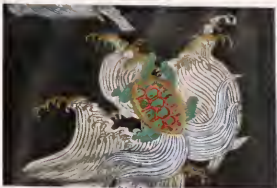
CHINE
Temps moderne



CHINA
Modern Times

CHINA
Neuzeit

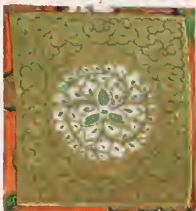
CHINE
Temps moderne



JAPAN
Modern Times

JAPAN
Neuzeit

JAPON
Temps moderne



JAPAN
Modern Times

JAPAN
Neuzeit

JAPON
Époque moderne



JAPAN (AINU)
Present Time

JAPAN (AINU)
Neuseit

JAPON (AINOS)
Époque moderne



AUSTRALIA
Present Time

AUSTRALIEN
Gegenwart

AUSTRALIE
Époque actuelle



OCEANIA
Present Time

OCEANIE
Gegenwart

Océanie
Époque actuelle



OCEANIA
Modern Times

OCEANIEN
Neuzeit

Océanie
Époque moderne



Océanie
Époque actuelle

Océanien
Gegenwart

Oceania
Present Time



NEW ZEALAND
19th Century

NEUSEELAND
19. Jahrhundert

NOUVELLE-ZÉLANDE
XIX^e siècle



OCEANIA
Present Time

OCEANIEN
Gegenwart

Océanie
Époque actuelle



NORTH-WEST AMERICA
1st and 2nd Third of 19th Century

NORDWESTAMERIKA
1. und 2. Drittel des 19. Jahrhunderts

NORD-OUEST DE L'AMÉRIQUE
1^{er} et 2^e tiers du XIX^e siècle



NORTH AMERICA
Pueblo District and California
Pre-Columbian - Modern Times

NORDAMERIKA
Pueblogebiet und Kalifornien
Vorkolumbische - moderne Zeit

AMÉRIQUE DU NORD
Pueblos et Californie
Époque précolombienne - époque moderne



NORTH AMERICA
Prairies and East
Present Time

NORDAMERIKA
Prairie und Osten
Gegenwart

AMÉRIQUE DU NORD
Prairie et Est
Époque actuelle



MEXICO
AND CENTRAL AMERICA
Pre-Columbian Times

MEXIKO
UND MITTELAMERIKA
Vorkolumbische Zeit

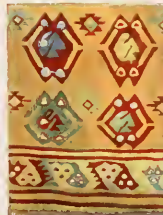
MEXIQUE
ET AMÉRIQUE CENTRALE
Époque précolombienne



MEXICO, PERU, BRAZIL,
BOLIVIA
Pre-Columbian Times
and 19th Century

MEXIKO, PERU, BRASILIEN,
BOLIVIEN
Vorkolumbische Zeit
und 19. Jahrhundert

MEXIQUE, PÉROU, BRÉSIL,
BOLIVIE
Époque précolombienne
et XIX^e siècle



PERU

Pre-Columbian Times

PERU

Vorkolumbische Zeit

PÉROU

Époque précolombienne



PERU
Pre-Columbian Times

PERU
Vorkolumbische Zeit

PÉROU
Époque précolombienne



PERU (NAZCA)
Pre-Columbian Period

PERU (NAZCA)
Vorkolumbische Zeit

PÉROU (NAZCA)
Époque précolombienne



SOUTH AMERICA
Pre-Columbian and Modern Times

SUDAMERIKA
Vorkolumbische und moderne Zeit

AMÉRIQUE DU SUD
Époques précolombienne et moderne



SOUTH AMERICA

Post-Columbian and Modern Times

SÜDAMERIKA

Nachkolumbische und moderne Zeit

AMÉRIQUE DU SUD

Époques postcolombienne et moderne

c
Refer to 02,
no receipt.



